

DEAL POST TEST 2019-20 - SCHOOL REPORT CARD

PONDY
DIS Z5

34020300501 **GPS, ARIYUR**

All Grades represent the following scorings in % *

GRADE A - >75	* School Status Grade represents the total enrollment of the school (Not %)
GRADE B - 51 TO 75	
GRADE C - 26 TO 50	
GRADE D - 10 TO 25	
GRADE E - <10	

Note: The Values given in the brackets denote the difference between the Pre and Post Test Scores.
(For Example: If the Pre-Test Grade is 'C' and the Post-Test Grade is 'A', then the progress is +2)

SCHOOL GRADE - BA

Status Gr. B (0) Performance Gr. A(+1)

OVERALL PERFORMANCE GRADES

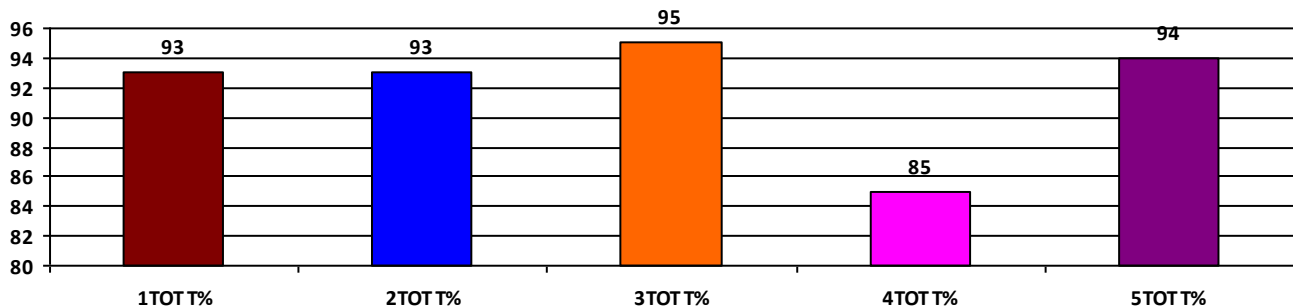
	Boys	Girls	Total
SCHOOL GR.	A	A	A
Diff. to Pre-Test	(+2)	(+1)	(+1)
DIST. GR.	B	B	B
STATE GR.	B	B	B

CLASSWISE APPEARED

DETAILS	I STD	II STD	III STD	IV STD	V STD
BOYS	6	9	6	5	10
GIRLS	7	8	8	6	7
TOTAL	13	17	14	11	17
Diff. to Pre-Test	(0)	(+1)	(+1)	(+2)	(+1)

CLASSWISE PERFORMANCE GRADES (% of marks)

DETAILS	I STD	II STD	III STD	IV STD	V STD
%	93	93	95	85	94
SCHOOL GR.	A	A	A	A	A
Diff. to Pre-Test	(+1)	(+1)	(+1)	(+2)	(+1)
DIST. GR.	A	B	B	B	B
STATE GR.	A	B	B	B	B



GRADEWISE PERFORMANCE (NO. OF STUDENTS)

ENGLISH	1 Std	2 Std	3 Std	4 Std	5 Std	TAMIL	1 Std	2 Std	3 Std	4 Std	5 Std
GR. A	12	16	12	10	16	GR. A	12	14	14	8	15
GR. B	0	1	2	1	1	GR. B	1	2	0	2	1
GR. C	1	0	0	0	0	GR. C	0	1	0	1	1
GR. D	0	0	0	0	0	GR. D	0	0	0	0	0
GR. E	0	0	0	0	0	GR. E	0	0	0	0	0

DEAL POST TEST 2019-20 - SCHOOL REPORT CARD

PONDY
DIS Z5

34020300701 **GPS, CHETIPET**

All Grades represent the following scorings in % *

GRADE A - >75	* School Status Grade represents the total enrollment of the school (Not %)
GRADE B - 51 TO 75	
GRADE C - 26 TO 50	
GRADE D - 10 TO 25	
GRADE E - <10	

Note: The Values given in the brackets denote the difference between the Pre and Post Test Scores.
(For Example: If the Pre-Test Grade is 'C' and the Post-Test Grade is 'A', then the progress is +2)

SCHOOL GRADE - CA

Status Gr. C (0) Performance Gr. A(+1)

OVERALL PERFORMANCE GRADES

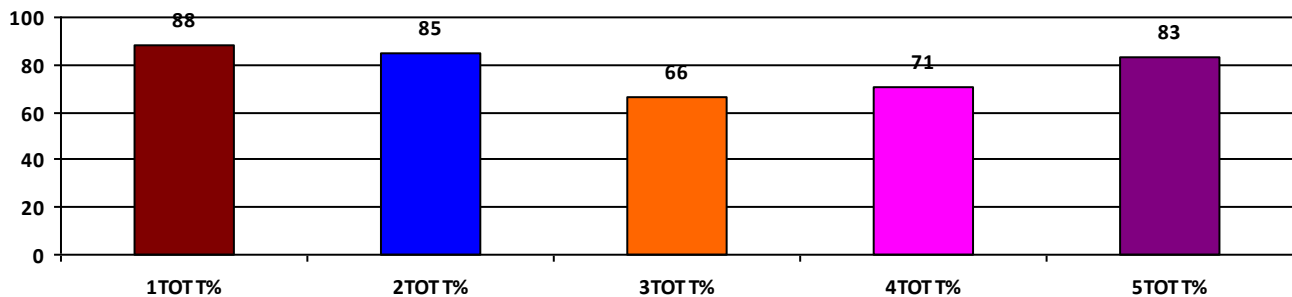
	Boys	Girls	Total
SCHOOL GR.	B	A	A
Diff. to Pre-Test	(0)	(+1)	(+1)
DIST. GR.	B	B	B
STATE GR.	B	B	B

CLASSWISE APPEARED

DETAILS	I STD	II STD	III STD	IV STD	V STD
BOYS	0	5	3	5	4
GIRLS	3	4	2	1	4
TOTAL	3	9	5	6	8
Diff. to Pre-Test	(0)	(0)	(0)	(0)	(0)

CLASSWISE PERFORMANCE GRADES (% of marks)

DETAILS	I STD	II STD	III STD	IV STD	V STD
%	88	85	66	71	83
SCHOOL GR.	A	A	B	B	A
Diff. to Pre-Test	(+1)	(+1)	(0)	(0)	(+1)
DIST. GR.	A	B	B	B	B
STATE GR.	A	B	B	B	B



GRADEWISE PERFORMANCE (NO. OF STUDENTS)

ENGLISH	1 Std	2 Std	3 Std	4 Std	5 Std	TAMIL	1 Std	2 Std	3 Std	4 Std	5 Std
GR. A	3	8	0	1	7	GR. A	3	7	3	4	7
GR. B	0	1	4	4	1	GR. B	0	1	2	1	1
GR. C	0	0	1	1	0	GR. C	0	1	0	1	0
GR. D	0	0	0	0	0	GR. D	0	0	0	0	0
GR. E	0	0	0	0	0	GR. E	0	0	0	0	0

DEAL POST TEST 2019-20 - SCHOOL REPORT CARD

PONDY
DIS Z5

34020301101 **GPS, KT KUPPAM PET**

All Grades represent the following scorings in % *

GRADE A - >75	* School Status Grade represents the total enrollment of the school (Not %)
GRADE B - 51 TO 75	
GRADE C - 26 TO 50	
GRADE D - 10 TO 25	
GRADE E - <10	

Note: The Values given in the brackets denote the difference between the Pre and Post Test Scores.
(For Example: If the Pre-Test Grade is 'C' and the Post-Test Grade is 'A', then the progress is +2)

SCHOOL GRADE - DA

Status Gr. D (0) Performance Gr. A(+1)

OVERALL PERFORMANCE GRADES

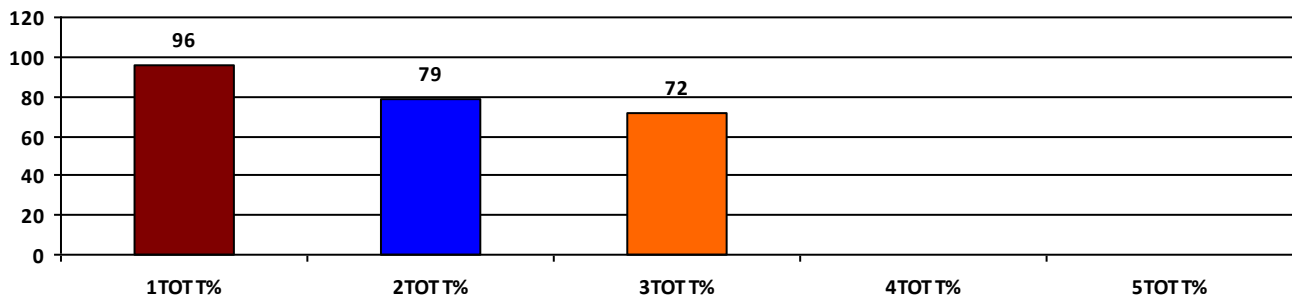
	Boys	Girls	Total
SCHOOL GR.	B	A	A
Diff. to Pre-Test	(0)	(0)	(+1)
DIST. GR.	B	B	B
STATE GR.	B	B	B

CLASSWISE APPEARED

DETAILS	I STD	II STD	III STD	IV STD	V STD
BOYS	2	1	5	0	0
GIRLS	3	3	2	0	0
TOTAL	5	4	7	0	0
Diff. to Pre-Test	(0)	(0)	(0)	(0)	(0)

CLASSWISE PERFORMANCE GRADES (% of marks)

DETAILS	I STD	II STD	III STD	IV STD	V STD
%	96	79	72	NA	NA
SCHOOL GR.	A	A	B	NA	NA
Diff. to Pre-Test	(0)	(+1)	(0)	(+8)	(+8)
DIST. GR.	A	B	B	B	B
STATE GR.	A	B	B	B	B



GRADEWISE PERFORMANCE (NO. OF STUDENTS)

ENGLISH	1 Std	2 Std	3 Std	4 Std	5 Std	TAMIL	1 Std	2 Std	3 Std	4 Std	5 Std
GR. A	5	3	1	0	0	GR. A	5	3	6	0	0
GR. B	0	0	5	0	0	GR. B	0	0	0	0	0
GR. C	0	1	1	0	0	GR. C	0	1	1	0	0
GR. D	0	0	0	0	0	GR. D	0	0	0	0	0
GR. E	0	0	0	0	0	GR. E	0	0	0	0	0

DEAL POST TEST 2019-20 - SCHOOL REPORT CARD

PONDY
DIS Z5

34020301102 GPS, K.T.KUPPAM

All Grades represent the following scorings in % *

GRADE A - >75	* School Status Grade represents the total enrollment of the school (Not %)
GRADE B - 51 TO 75	
GRADE C - 26 TO 50	
GRADE D - 10 TO 25	
GRADE E - <10	

Note: The Values given in the brackets denote the difference between the Pre and Post Test Scores.
(For Example: If the Pre-Test Grade is 'C' and the Post-Test Grade is 'A', then the progress is +2)

SCHOOL GRADE - AA

Status Gr. A (0) Performance Gr. A(+2)

OVERALL PERFORMANCE GRADES

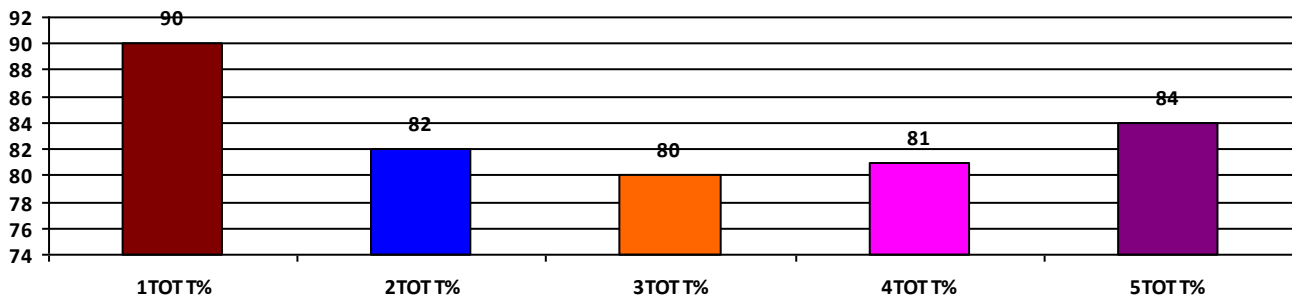
	Boys	Girls	Total
SCHOOL GR.	A	A	A
Diff. to Pre-Test	(+2)	(+1)	(+2)
DIST. GR.	B	B	B
STATE GR.	B	B	B

CLASSWISE APPEARED

DETAILS	I STD	II STD	III STD	IV STD	V STD
BOYS	15	24	20	16	15
GIRLS	13	18	25	17	21
TOTAL	28	42	45	33	36
Diff. to Pre-Test	(+1)	(+3)	(0)	(+2)	(+1)

CLASSWISE PERFORMANCE GRADES (% of marks)

DETAILS	I STD	II STD	III STD	IV STD	V STD
%	90	82	80	81	84
SCHOOL GR.	A	A	A	A	A
Diff. to Pre-Test	(+1)	(+2)	(+1)	(+2)	(+2)
DIST. GR.	A	B	B	B	B
STATE GR.	A	B	B	B	B



GRADEWISE PERFORMANCE (NO. OF STUDENTS)

ENGLISH	1 Std	2 Std	3 Std	4 Std	5 Std	TAMIL	1 Std	2 Std	3 Std	4 Std	5 Std
GR. A	25	34	30	23	23	GR. A	27	25	31	25	29
GR. B	3	6	12	10	13	GR. B	1	15	12	6	6
GR. C	0	1	2	0	0	GR. C	0	0	1	2	1
GR. D	0	0	1	0	0	GR. D	0	1	1	0	0
GR. E	0	1	0	0	0	GR. E	0	1	0	0	0

DEAL POST TEST 2019-20 - SCHOOL REPORT CARD

PONDY
DIS Z5

34020301105 **GPS, ANDIARPALAYAM**

All Grades represent the following scorings in % *

GRADE A - >75	
GRADE B - 51 TO 75	* School Status Grade
GRADE C - 26 TO 50	represents the total
GRADE D - 10 TO 25	enrollment of the
GRADE E - <10	school (Not %)

Note: The Values given in the brackets denote the difference between the Pre and Post Test Scores.
(For Example: If the Pre-Test Grade is 'C' and the Post-Test Grade is 'A', then the progress is +2)

SCHOOL GRADE - BA

Status Gr. B(+1) Performance Gr. A(+2)

OVERALL PERFORMANCE GRADES

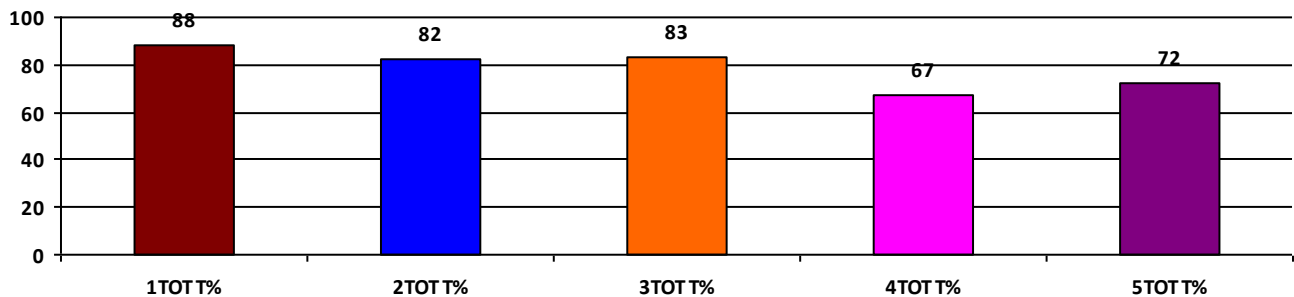
	Boys	Girls	Total
SCHOOL GR.	B	A	A
Diff. to Pre-Test	(+1)	(+1)	(+2)
DIST. GR.	B	B	B
STATE GR.	B	B	B

CLASSWISE APPEARED

DETAILS	I STD	II STD	III STD	IV STD	V STD
BOYS	2	6	7	7	4
GIRLS	5	4	4	5	6
TOTAL	7	10	11	12	10
Diff. to Pre-Test	(+1)	(+1)	(0)	(0)	(+1)

CLASSWISE PERFORMANCE GRADES (% of marks)

DETAILS	I STD	II STD	III STD	IV STD	V STD
%	88	82	83	67	72
SCHOOL GR.	A	A	A	B	B
Diff. to Pre-Test	(0)	(+2)	(+2)	(+1)	(+1)
DIST. GR.	A	B	B	B	B
STATE GR.	A	B	B	B	B



GRADEWISE PERFORMANCE (NO. OF STUDENTS)

ENGLISH	1 Std	2 Std	3 Std	4 Std	5 Std	TAMIL	1 Std	2 Std	3 Std	4 Std	5 Std
GR. A	6	5	8	2	7	GR. A	6	9	8	7	7
GR. B	0	4	2	5	0	GR. B	1	0	2	4	0
GR. C	1	1	1	4	2	GR. C	0	1	1	1	2
GR. D	0	0	0	1	0	GR. D	0	0	0	0	0
GR. E	0	0	0	0	1	GR. E	0	0	0	0	1

DEAL POST TEST 2019-20 - SCHOOL REPORT CARD

PONDY
DIS Z5

34020301107 **GPS, SILUKARIPALAYAM**

All Grades represent the following scorings in % *

GRADE A - >75	
GRADE B - 51 TO 75	* School Status Grade
GRADE C - 26 TO 50	represents the total
GRADE D - 10 TO 25	enrollment of the
GRADE E - <10	school (Not %)

Note: The Values given in the brackets denote the difference between the Pre and Post Test Scores.
(For Example: If the Pre-Test Grade is 'C' and the Post-Test Grade is 'A', then the progress is +2)

SCHOOL GRADE - EA

Status Gr. E (0) Performance Gr. A (0)

OVERALL PERFORMANCE GRADES

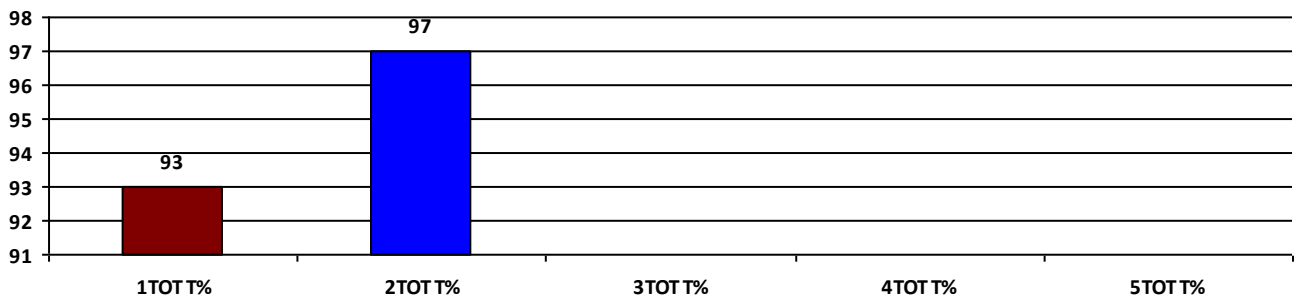
	Boys	Girls	Total
SCHOOL GR.	A	A	A
Diff. to Pre-Test	(0)	(0)	(0)
DIST. GR.	B	B	B
STATE GR.	B	B	B

CLASSWISE APPEARED

DETAILS	I STD	II STD	III STD	IV STD	V STD
BOYS	1	3	0	0	0
GIRLS	1	2	0	0	0
TOTAL	2	5	0	0	0
Diff. to Pre-Test	(0)	(0)	(0)	(0)	(0)

CLASSWISE PERFORMANCE GRADES (% of marks)

DETAILS	I STD	II STD	III STD	IV STD	V STD
%	93	97	NA	NA	NA
SCHOOL GR.	A	A	NA	NA	NA
Diff. to Pre-Test	(0)	(0)	(+8)	(+8)	(+8)
DIST. GR.	A	B	B	B	B
STATE GR.	A	B	B	B	B



GRADEWISE PERFORMANCE (NO. OF STUDENTS)

ENGLISH	1 Std	2 Std	3 Std	4 Std	5 Std	TAMIL	1 Std	2 Std	3 Std	4 Std	5 Std
GR. A	2	5	0	0	0	GR. A	2	5	0	0	0
GR. B	0	0	0	0	0	GR. B	0	0	0	0	0
GR. C	0	0	0	0	0	GR. C	0	0	0	0	0
GR. D	0	0	0	0	0	GR. D	0	0	0	0	0
GR. E	0	0	0	0	0	GR. E	0	0	0	0	0

DEAL POST TEST 2019-20 - SCHOOL REPORT CARD

PONDY
DIS Z5

34020301301 **GPS, KARASUR**

All Grades represent the following scorings in % *

GRADE A - >75	* School Status Grade represents the total enrollment of the school (Not %)
GRADE B - 51 TO 75	
GRADE C - 26 TO 50	
GRADE D - 10 TO 25	
GRADE E - <10	

Note: The Values given in the brackets denote the difference between the Pre and Post Test Scores.
(For Example: If the Pre-Test Grade is 'C' and the Post-Test Grade is 'A', then the progress is +2)

SCHOOL GRADE - CA

Status Gr. C (0) Performance Gr. A(+2)

OVERALL PERFORMANCE GRADES

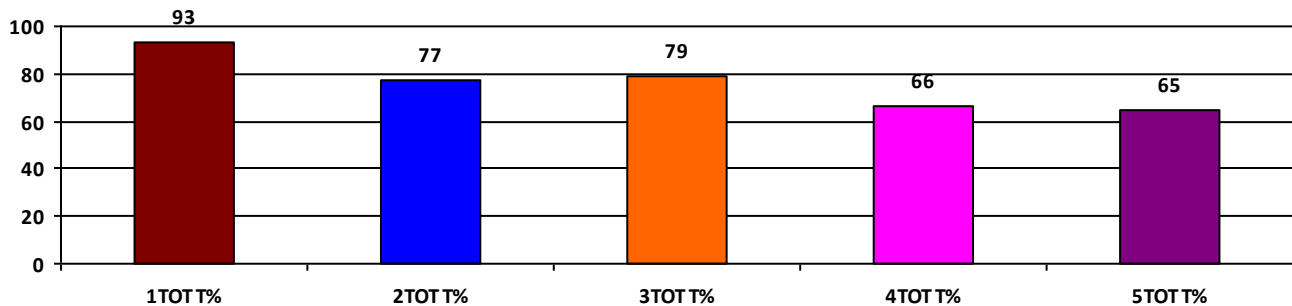
	Boys	Girls	Total
SCHOOL GR.	A	B	A
Diff. to Pre-Test	(+1)	(+1)	(+2)
DIST. GR.	B	B	B
STATE GR.	B	B	B

CLASSWISE APPEARED

DETAILS	I STD	II STD	III STD	IV STD	V STD
BOYS	6	5	6	0	7
GIRLS	2	9	4	4	1
TOTAL	8	14	10	4	8
Diff. to Pre-Test	(-2)	(0)	(0)	(0)	(-1)

CLASSWISE PERFORMANCE GRADES (% of marks)

DETAILS	I STD	II STD	III STD	IV STD	V STD
%	93	77	79	66	65
SCHOOL GR.	A	A	A	B	B
Diff. to Pre-Test	(+1)	(+2)	(+1)	(0)	(+1)
DIST. GR.	A	B	B	B	B
STATE GR.	A	B	B	B	B



GRADEWISE PERFORMANCE (NO. OF STUDENTS)

ENGLISH	1 Std	2 Std	3 Std	4 Std	5 Std	TAMIL	1 Std	2 Std	3 Std	4 Std	5 Std
GR. A	7	7	5	3	3	GR. A	7	10	7	3	3
GR. B	1	5	5	0	3	GR. B	1	3	2	0	3
GR. C	0	2	0	0	1	GR. C	0	0	1	0	1
GR. D	0	0	0	0	0	GR. D	0	1	0	0	0
GR. E	0	0	0	1	1	GR. E	0	0	0	1	1

DEAL POST TEST 2019-20 - SCHOOL REPORT CARD

PONDY
DIS Z5

34020301401 **GSPS, KATTERIKUPPAM**

All Grades represent the following scorings in % *

GRADE A - >75	
GRADE B - 51 TO 75	* School Status Grade
GRADE C - 26 TO 50	represents the total
GRADE D - 10 TO 25	enrollment of the
GRADE E - <10	school (Not %)

Note: The Values given in the brackets denote the difference between the Pre and Post Test Scores.
(For Example: If the Pre-Test Grade is 'C' and the Post-Test Grade is 'A', then the progress is +2)

SCHOOL GRADE - AB

Status Gr. A (0) Performance Gr. B(+1)

OVERALL PERFORMANCE GRADES

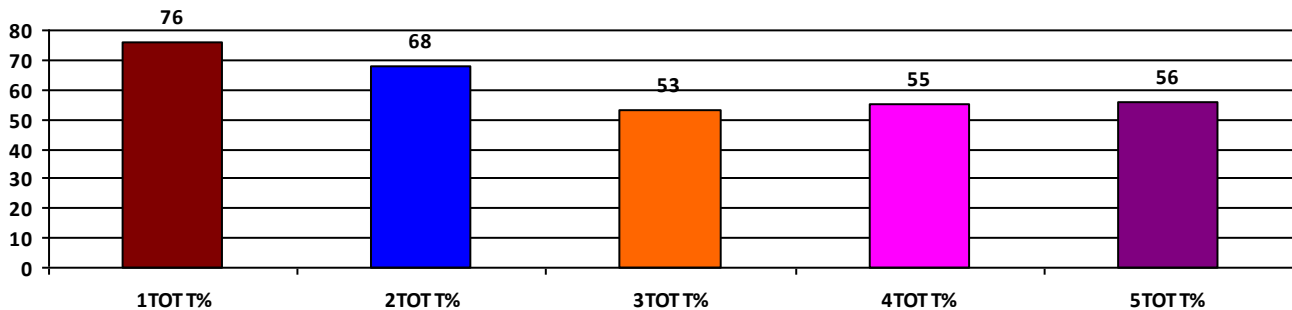
	Boys	Girls	Total
SCHOOL GR.	B	B	B
Diff. to Pre-Test	(+1)	(0)	(+1)
DIST. GR.	B	B	B
STATE GR.	B	B	B

CLASSWISE APPEARED

DETAILS	I STD	II STD	III STD	IV STD	V STD
BOYS	12	16	9	18	18
GIRLS	18	8	16	11	17
TOTAL	30	24	25	29	35
Diff. to Pre-Test	(+1)	(+2)	(+1)	(+4)	(+2)

CLASSWISE PERFORMANCE GRADES (% of marks)

DETAILS	I STD	II STD	III STD	IV STD	V STD
%	76	68	53	55	56
SCHOOL GR.	A	B	B	B	B
Diff. to Pre-Test	(+1)	(0)	(+1)	(+1)	(+1)
DIST. GR.	A	B	B	B	B
STATE GR.	A	B	B	B	B



GRADEWISE PERFORMANCE (NO. OF STUDENTS)

ENGLISH	1 Std	2 Std	3 Std	4 Std	5 Std	TAMIL	1 Std	2 Std	3 Std	4 Std	5 Std
GR. A	20	10	4	8	12	GR. A	15	13	6	8	10
GR. B	8	9	10	7	6	GR. B	12	2	6	11	11
GR. C	2	3	9	10	11	GR. C	3	6	7	6	5
GR. D	0	1	2	3	6	GR. D	0	3	6	2	6
GR. E	0	1	0	1	0	GR. E	0	0	0	2	3

DEAL POST TEST 2019-20 - SCHOOL REPORT CARD

PONDY
DIS Z5

34020301404 **GPS, L.R. PALAYAM**

All Grades represent the following scorings in % *

GRADE A - >75	* School Status Grade represents the total enrollment of the school (Not %)
GRADE B - 51 TO 75	
GRADE C - 26 TO 50	
GRADE D - 10 TO 25	
GRADE E - <10	

Note: The Values given in the brackets denote the difference between the Pre and Post Test Scores.
(For Example: If the Pre-Test Grade is 'C' and the Post-Test Grade is 'A', then the progress is +2)

SCHOOL GRADE - CA

Status Gr. C (0) Performance Gr. A(+1)

OVERALL PERFORMANCE GRADES

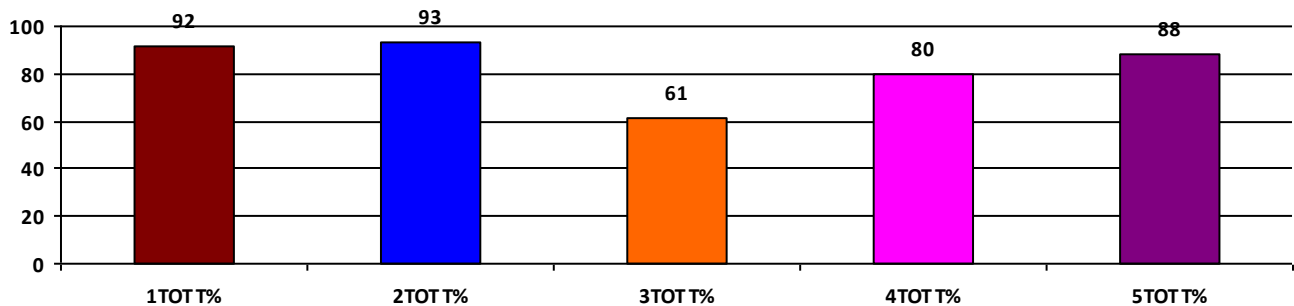
	Boys	Girls	Total
SCHOOL GR.	A	A	A
Diff. to Pre-Test	(+1)	(+1)	(+1)
DIST. GR.	B	B	B
STATE GR.	B	B	B

CLASSWISE APPEARED

DETAILS	I STD	II STD	III STD	IV STD	V STD
BOYS	4	2	2	2	4
GIRLS	4	2	4	8	4
TOTAL	8	4	6	10	8
Diff. to Pre-Test	(0)	(0)	(+1)	(0)	(0)

CLASSWISE PERFORMANCE GRADES (% of marks)

DETAILS	I STD	II STD	III STD	IV STD	V STD
%	92	93	61	80	88
SCHOOL GR.	A	A	B	A	A
Diff. to Pre-Test	(+1)	(+1)	(+1)	(+1)	(+1)
DIST. GR.	A	B	B	B	B
STATE GR.	A	B	B	B	B



GRADEWISE PERFORMANCE (NO. OF STUDENTS)

ENGLISH	1 Std	2 Std	3 Std	4 Std	5 Std	TAMIL	1 Std	2 Std	3 Std	4 Std	5 Std
GR. A	8	4	4	6	6	GR. A	8	4	3	8	7
GR. B	0	0	0	3	2	GR. B	0	0	1	2	1
GR. C	0	0	0	1	0	GR. C	0	0	0	0	0
GR. D	0	0	1	0	0	GR. D	0	0	1	0	0
GR. E	0	0	1	0	0	GR. E	0	0	1	0	0

DEAL POST TEST 2019-20 - SCHOOL REPORT CARD

PONDY
DIS Z5

34020301901 **GHSS, KOODAPAKKAM**

All Grades represent the following scorings in % *

GRADE A - >75	* School Status Grade represents the total enrollment of the school (Not %)
GRADE B - 51 TO 75	
GRADE C - 26 TO 50	
GRADE D - 10 TO 25	
GRADE E - <10	

Note: The Values given in the brackets denote the difference between the Pre and Post Test Scores.
(For Example: If the Pre-Test Grade is 'C' and the Post-Test Grade is 'A', then the progress is +2)

SCHOOL GRADE - BB

Status Gr. B (0) Performance Gr. B(+1)

OVERALL PERFORMANCE GRADES

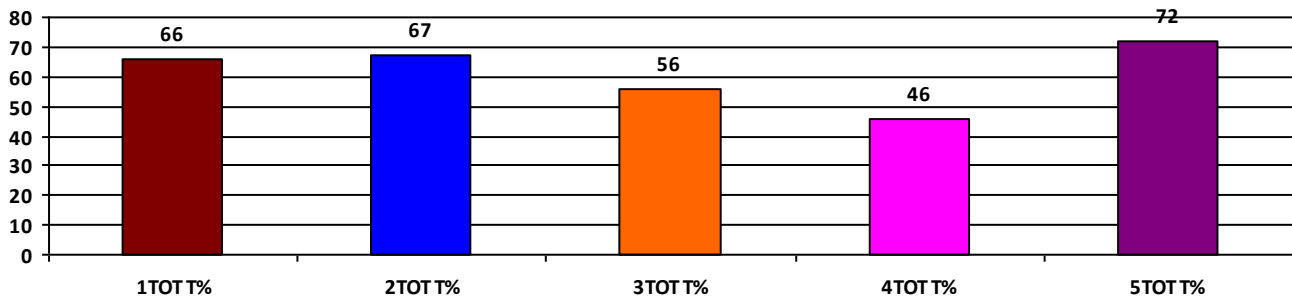
	Boys	Girls	Total
SCHOOL GR.	B	B	B
Diff. to Pre-Test	(+1)	(0)	(+1)
DIST. GR.	B	B	B
STATE GR.	B	B	B

CLASSWISE APPEARED

DETAILS	I STD	II STD	III STD	IV STD	V STD
BOYS	2	7	5	7	9
GIRLS	4	5	10	11	10
TOTAL	6	12	15	18	19
Diff. to Pre-Test	(+1)	(-1)	(0)	(+1)	(0)

CLASSWISE PERFORMANCE GRADES (% of marks)

DETAILS	I STD	II STD	III STD	IV STD	V STD
%	66	67	56	46	72
SCHOOL GR.	B	B	B	C	B
Diff. to Pre-Test	(+1)	(0)	(+1)	(0)	(0)
DIST. GR.	A	B	B	B	B
STATE GR.	A	B	B	B	B



GRADEWISE PERFORMANCE (NO. OF STUDENTS)

ENGLISH	1 Std	2 Std	3 Std	4 Std	5 Std	TAMIL	1 Std	2 Std	3 Std	4 Std	5 Std
GR. A	2	4	0	1	12	GR. A	5	6	6	8	12
GR. B	1	2	3	7	1	GR. B	0	3	9	2	3
GR. C	3	6	7	2	5	GR. C	1	3	0	3	3
GR. D	0	0	5	3	1	GR. D	0	0	0	1	1
GR. E	0	0	0	5	0	GR. E	0	0	0	4	0

DEAL POST TEST 2019-20 - SCHOOL REPORT CARD

PONDY
DIS Z5

34020302001 **GPS, KOONICHEMPATTU**

All Grades represent the following scorings in % *

GRADE A - >75	* School Status Grade represents the total enrollment of the school (Not %)
GRADE B - 51 TO 75	
GRADE C - 26 TO 50	
GRADE D - 10 TO 25	
GRADE E - <10	

Note: The Values given in the brackets denote the difference between the Pre and Post Test Scores.
(For Example: If the Pre-Test Grade is 'C' and the Post-Test Grade is 'A', then the progress is +2)

SCHOOL GRADE - AA

Status Gr. A (0)	Performance Gr. A(+1)
------------------	-----------------------

OVERALL PERFORMANCE GRADES

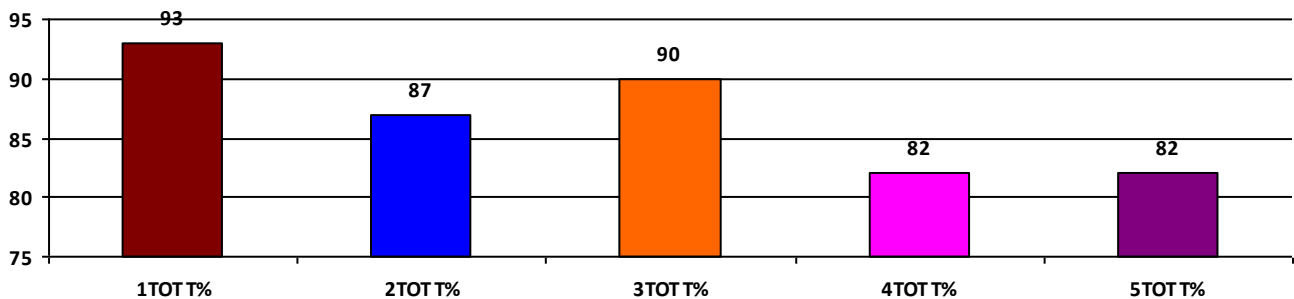
	Boys	Girls	Total
SCHOOL GR.	A	A	A
Diff. to Pre-Test	(+1)	(+1)	(+1)
DIST. GR.	B	B	B
STATE GR.	B	B	B

CLASSWISE APPEARED

DETAILS	I STD	II STD	III STD	IV STD	V STD
BOYS	42	36	40	30	29
GIRLS	40	38	48	40	29
TOTAL	82	74	88	70	58
Diff. to Pre-Test	(+3)	(-4)	(-1)	(0)	(+1)

CLASSWISE PERFORMANCE GRADES (% of marks)

DETAILS	I STD	II STD	III STD	IV STD	V STD
%	93	87	90	82	82
SCHOOL GR.	A	A	A	A	A
Diff. to Pre-Test	(+1)	(+1)	(+1)	(+1)	(+1)
DIST. GR.	A	B	B	B	B
STATE GR.	A	B	B	B	B



GRADEWISE PERFORMANCE (NO. OF STUDENTS)

ENGLISH	1 Std	2 Std	3 Std	4 Std	5 Std	TAMIL	1 Std	2 Std	3 Std	4 Std	5 Std
GR. A	75	60	79	49	43	GR. A	80	65	80	58	46
GR. B	7	10	5	16	11	GR. B	1	7	4	5	5
GR. C	0	4	1	4	3	GR. C	1	2	1	6	6
GR. D	0	0	0	0	0	GR. D	0	0	0	0	0
GR. E	0	0	3	1	1	GR. E	0	0	3	1	1

DEAL POST TEST 2019-20 - SCHOOL REPORT CARD

PONDY
DIS Z5

34020302908 **GPS, SOMPET**

All Grades represent the following scorings in % *

GRADE A - >75	
GRADE B - 51 TO 75	* School Status Grade
GRADE C - 26 TO 50	represents the total
GRADE D - 10 TO 25	enrollment of the
GRADE E - <10	school (Not %)

Note: The Values given in the brackets denote the difference between the Pre and Post Test Scores.
(For Example: If the Pre-Test Grade is 'C' and the Post-Test Grade is 'A', then the progress is +2)

SCHOOL GRADE - DB

Status Gr. D (0) Performance Gr. B(+1)

OVERALL PERFORMANCE GRADES

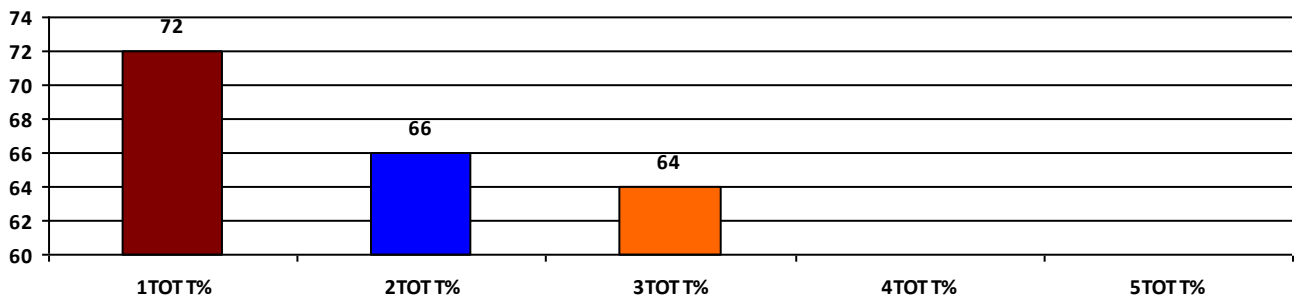
	Boys	Girls	Total
SCHOOL GR.	B	B	B
Diff. to Pre-Test	(+1)	(+1)	(+1)
DIST. GR.	B	B	B
STATE GR.	B	B	B

CLASSWISE APPEARED

DETAILS	I STD	II STD	III STD	IV STD	V STD
BOYS	4	5	4	0	0
GIRLS	4	3	5	0	0
TOTAL	8	8	9	0	0
Diff. to Pre-Test	(+1)	(0)	(+1)	(0)	(0)

CLASSWISE PERFORMANCE GRADES (% of marks)

DETAILS	I STD	II STD	III STD	IV STD	V STD
%	72	66	64	NA	NA
SCHOOL GR.	B	B	B	NA	NA
Diff. to Pre-Test	(0)	(+1)	(+1)	(+8)	(+8)
DIST. GR.	A	B	B	B	B
STATE GR.	A	B	B	B	B



GRADEWISE PERFORMANCE (NO. OF STUDENTS)

ENGLISH	1 Std	2 Std	3 Std	4 Std	5 Std	TAMIL	1 Std	2 Std	3 Std	4 Std	5 Std
GR. A	3	3	4	0	0	GR. A	6	2	1	0	0
GR. B	4	4	4	0	0	GR. B	1	3	4	0	0
GR. C	1	1	1	0	0	GR. C	1	2	4	0	0
GR. D	0	0	0	0	0	GR. D	0	1	0	0	0
GR. E	0	0	0	0	0	GR. E	0	0	0	0	0

DEAL POST TEST 2019-20 - SCHOOL REPORT CARD

PONDY
DIS Z5

34020302909 **GGPS, THIRUKKANUR**

All Grades represent the following scorings in % *

GRADE A - >75	
GRADE B - 51 TO 75	* School Status Grade
GRADE C - 26 TO 50	represents the total
GRADE D - 10 TO 25	enrollment of the
GRADE E - <10	school (Not %)

Note: The Values given in the brackets denote the difference between the Pre and Post Test Scores.
(For Example: If the Pre-Test Grade is 'C' and the Post-Test Grade is 'A', then the progress is +2)

SCHOOL GRADE - AB

Status Gr. A (0)	Performance Gr. B (0)
------------------	-----------------------

OVERALL PERFORMANCE GRADES

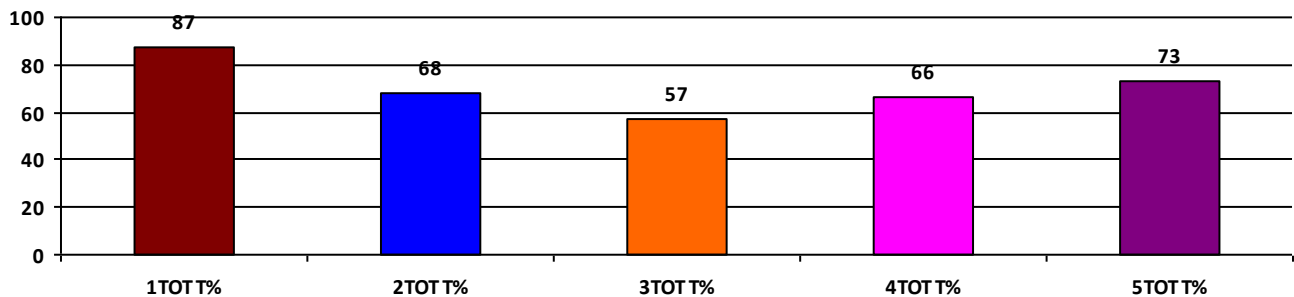
	Boys	Girls	Total
SCHOOL GR.	NA	B	B
Diff. to Pre-Test	(+8)	(0)	(0)
DIST. GR.	B	B	B
STATE GR.	B	B	B

CLASSWISE APPEARED

DETAILS	I STD	II STD	III STD	IV STD	V STD
BOYS	0	0	0	0	0
GIRLS	24	26	29	39	51
TOTAL	24	26	29	39	51
Diff. to Pre-Test	(0)	(-1)	(+2)	(0)	(0)

CLASSWISE PERFORMANCE GRADES (% of marks)

DETAILS	I STD	II STD	III STD	IV STD	V STD
%	87	68	57	66	73
SCHOOL GR.	A	B	B	B	B
Diff. to Pre-Test	(0)	(-1)	(0)	(0)	(0)
DIST. GR.	A	B	B	B	B
STATE GR.	A	B	B	B	B



GRADEWISE PERFORMANCE (NO. OF STUDENTS)

ENGLISH	1 Std	2 Std	3 Std	4 Std	5 Std	TAMIL	1 Std	2 Std	3 Std	4 Std	5 Std
GR. A	21	9	6	9	27	GR. A	23	16	10	22	27
GR. B	3	10	5	22	16	GR. B	1	5	10	12	20
GR. C	0	5	16	3	5	GR. C	0	5	8	3	2
GR. D	0	2	1	4	2	GR. D	0	0	0	1	1
GR. E	0	0	1	1	1	GR. E	0	0	1	1	1

DEAL POST TEST 2019-20 - SCHOOL REPORT CARD

PONDY
DIS Z5

34020303701 **GPS, PILLAIYARKUPPAM(V)**

All Grades represent the following scorings in % *

GRADE A - >75	* School Status Grade represents the total enrollment of the school (Not %)
GRADE B - 51 TO 75	
GRADE C - 26 TO 50	
GRADE D - 10 TO 25	
GRADE E - <10	

Note: The Values given in the brackets denote the difference between the Pre and Post Test Scores.
(For Example: If the Pre-Test Grade is 'C' and the Post-Test Grade is 'A', then the progress is +2)

SCHOOL GRADE - AB

Status Gr. A (0)	Performance Gr. B (0)
------------------	-----------------------

OVERALL PERFORMANCE GRADES

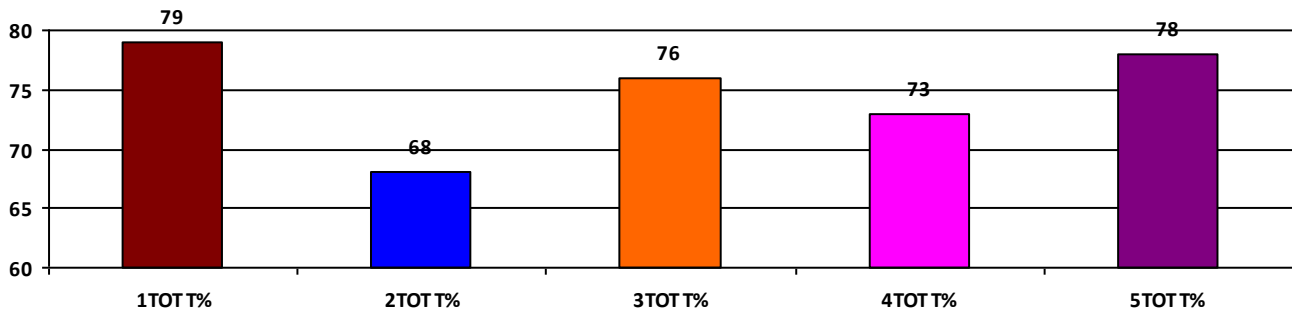
	Boys	Girls	Total
SCHOOL GR.	B	A	B
Diff. to Pre-Test	(0)	(+1)	(0)
DIST. GR.	B	B	B
STATE GR.	B	B	B

CLASSWISE APPEARED

DETAILS	I STD	II STD	III STD	IV STD	V STD
BOYS	9	8	11	3	10
GIRLS	16	11	4	11	4
TOTAL	25	19	15	14	14
Diff. to Pre-Test	(0)	(+1)	(0)	(0)	(0)

CLASSWISE PERFORMANCE GRADES (% of marks)

DETAILS	I STD	II STD	III STD	IV STD	V STD
%	79	68	76	73	78
SCHOOL GR.	A	B	A	B	A
Diff. to Pre-Test	(+1)	(+1)	(+1)	(0)	(+1)
DIST. GR.	A	B	B	B	B
STATE GR.	A	B	B	B	B



GRADEWISE PERFORMANCE (NO. OF STUDENTS)

ENGLISH	1 Std	2 Std	3 Std	4 Std	5 Std	TAMIL	1 Std	2 Std	3 Std	4 Std	5 Std
GR. A	5	7	8	7	9	GR. A	23	8	9	9	8
GR. B	18	7	7	6	4	GR. B	2	8	6	3	6
GR. C	2	5	0	0	1	GR. C	0	3	0	1	0
GR. D	0	0	0	0	0	GR. D	0	0	0	0	0
GR. E	0	0	0	1	0	GR. E	0	0	0	1	0

DEAL POST TEST 2019-20 - SCHOOL REPORT CARD

PONDY
DIS Z5

34020303901 **GPS, RAMANATHAPURAM**

All Grades represent the following scorings in % *

GRADE A - >75	* School Status Grade represents the total enrollment of the school (Not %)
GRADE B - 51 TO 75	
GRADE C - 26 TO 50	
GRADE D - 10 TO 25	
GRADE E - <10	

Note: The Values given in the brackets denote the difference between the Pre and Post Test Scores.
(For Example: If the Pre-Test Grade is 'C' and the Post-Test Grade is 'A', then the progress is +2)

SCHOOL GRADE - CA

Status Gr. C (0) Performance Gr. A(+1)

OVERALL PERFORMANCE GRADES

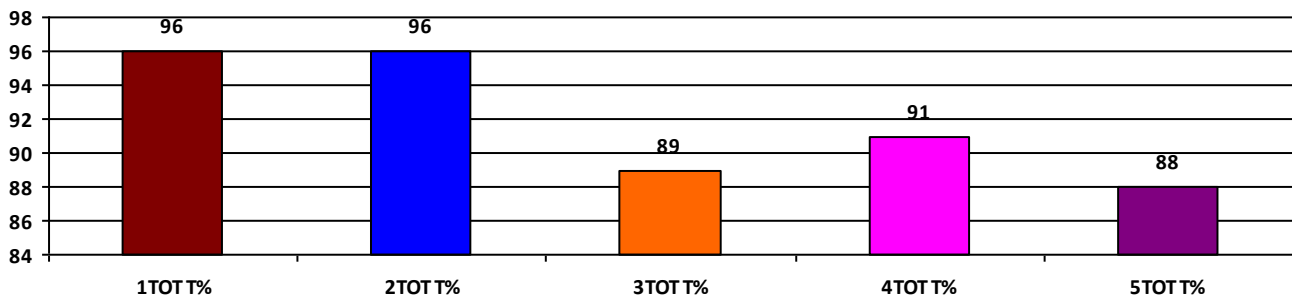
	Boys	Girls	Total
SCHOOL GR.	A	A	A
Diff. to Pre-Test	(+1)	(+1)	(+1)
DIST. GR.	B	B	B
STATE GR.	B	B	B

CLASSWISE APPEARED

DETAILS	I STD	II STD	III STD	IV STD	V STD
BOYS	5	3	5	5	4
GIRLS	5	7	6	4	3
TOTAL	10	10	11	9	7
Diff. to Pre-Test	(+1)	(-1)	(0)	(0)	(+1)

CLASSWISE PERFORMANCE GRADES (% of marks)

DETAILS	I STD	II STD	III STD	IV STD	V STD
%	96	96	89	91	88
SCHOOL GR.	A	A	A	A	A
Diff. to Pre-Test	(0)	(+1)	(+1)	(+1)	(+2)
DIST. GR.	A	B	B	B	B
STATE GR.	A	B	B	B	B



GRADEWISE PERFORMANCE (NO. OF STUDENTS)

ENGLISH	1 Std	2 Std	3 Std	4 Std	5 Std	TAMIL	1 Std	2 Std	3 Std	4 Std	5 Std
GR. A	9	10	10	8	6	GR. A	10	10	9	9	6
GR. B	1	0	1	1	1	GR. B	0	0	2	0	1
GR. C	0	0	0	0	0	GR. C	0	0	0	0	0
GR. D	0	0	0	0	0	GR. D	0	0	0	0	0
GR. E	0	0	0	0	0	GR. E	0	0	0	0	0

DEAL POST TEST 2019-20 - SCHOOL REPORT CARD

PONDY
DIS Z5

34020304201 **GPS, SEDARAPET**

All Grades represent the following scorings in % *

GRADE A - >75	
GRADE B - 51 TO 75	* School Status Grade
GRADE C - 26 TO 50	represents the total
GRADE D - 10 TO 25	enrollment of the
GRADE E - <10	school (Not %)

Note: The Values given in the brackets denote the difference between the Pre and Post Test Scores.
(For Example: If the Pre-Test Grade is 'C' and the Post-Test Grade is 'A', then the progress is +2)

SCHOOL GRADE - AA

Status Gr. A (0)	Performance Gr. A(+1)
------------------	-----------------------

OVERALL PERFORMANCE GRADES

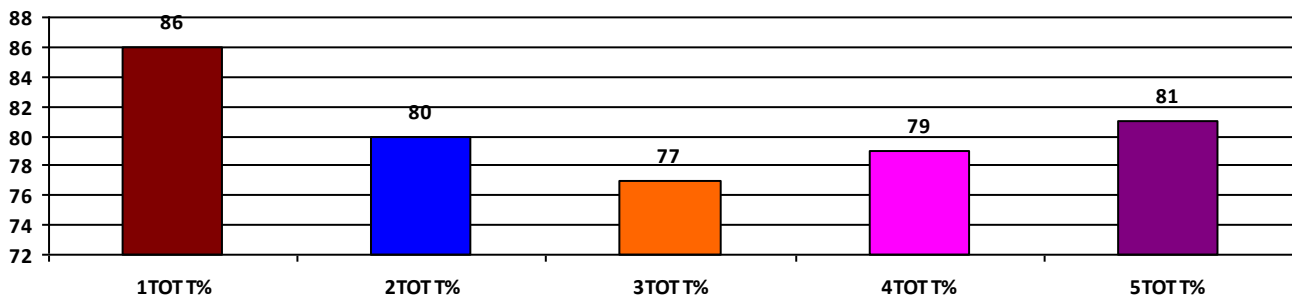
	Boys	Girls	Total
SCHOOL GR.	A	A	A
Diff. to Pre-Test	(+1)	(+1)	(+1)
DIST. GR.	B	B	B
STATE GR.	B	B	B

CLASSWISE APPEARED

DETAILS	I STD	II STD	III STD	IV STD	V STD
BOYS	14	12	16	12	14
GIRLS	9	11	13	15	11
TOTAL	23	23	29	27	25
Diff. to Pre-Test	(-1)	(0)	(+3)	(+1)	(+2)

CLASSWISE PERFORMANCE GRADES (% of marks)

DETAILS	I STD	II STD	III STD	IV STD	V STD
%	86	80	77	79	81
SCHOOL GR.	A	A	A	A	A
Diff. to Pre-Test	(+1)	(+1)	(+1)	(+1)	(+1)
DIST. GR.	A	B	B	B	B
STATE GR.	A	B	B	B	B



GRADEWISE PERFORMANCE (NO. OF STUDENTS)

ENGLISH	1 Std	2 Std	3 Std	4 Std	5 Std	TAMIL	1 Std	2 Std	3 Std	4 Std	5 Std
GR. A	19	16	20	22	19	GR. A	20	14	17	21	18
GR. B	1	5	4	1	2	GR. B	2	3	6	1	4
GR. C	3	1	5	3	4	GR. C	1	4	6	3	1
GR. D	0	1	0	0	0	GR. D	0	2	0	1	2
GR. E	0	0	0	1	0	GR. E	0	0	0	1	0

DEAL POST TEST 2019-20 - SCHOOL REPORT CARD

PONDY
DIS Z5

34020304801 **GPS, SORAPET**

All Grades represent the following scorings in % *

GRADE A - >75	* School Status Grade represents the total enrollment of the school (Not %)
GRADE B - 51 TO 75	
GRADE C - 26 TO 50	
GRADE D - 10 TO 25	
GRADE E - <10	

Note: The Values given in the brackets denote the difference between the Pre and Post Test Scores.
(For Example: If the Pre-Test Grade is 'C' and the Post-Test Grade is 'A', then the progress is +2)

SCHOOL GRADE - AA

Status Gr. A (0)	Performance Gr. A(+1)
------------------	-----------------------

OVERALL PERFORMANCE GRADES

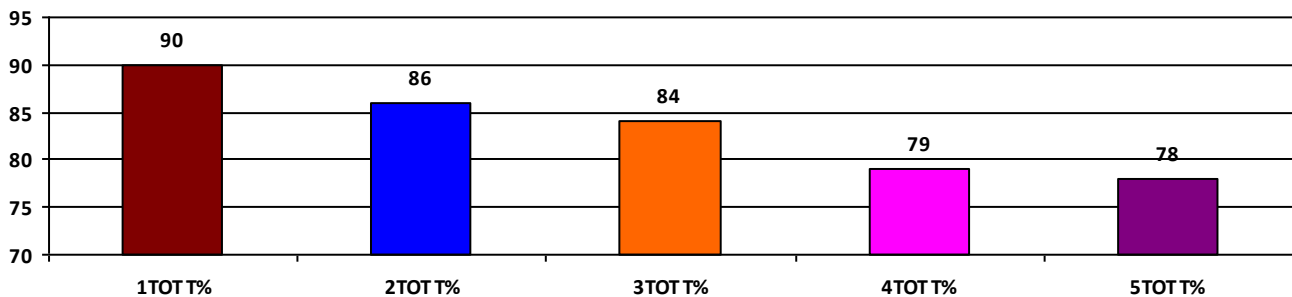
	Boys	Girls	Total
SCHOOL GR.	A	A	A
Diff. to Pre-Test	(+1)	(+1)	(+1)
DIST. GR.	B	B	B
STATE GR.	B	B	B

CLASSWISE APPEARED

DETAILS	I STD	II STD	III STD	IV STD	V STD
BOYS	12	9	6	14	13
GIRLS	9	15	18	22	11
TOTAL	21	24	24	36	24
Diff. to Pre-Test	(+1)	(0)	(+2)	(+1)	(-2)

CLASSWISE PERFORMANCE GRADES (% of marks)

DETAILS	I STD	II STD	III STD	IV STD	V STD
%	90	86	84	79	78
SCHOOL GR.	A	A	A	A	A
Diff. to Pre-Test	(0)	(+1)	(+1)	(+1)	(+2)
DIST. GR.	A	B	B	B	B
STATE GR.	A	B	B	B	B



GRADEWISE PERFORMANCE (NO. OF STUDENTS)

ENGLISH	1 Std	2 Std	3 Std	4 Std	5 Std	TAMIL	1 Std	2 Std	3 Std	4 Std	5 Std
GR. A	20	16	19	24	18	GR. A	18	21	20	24	18
GR. B	0	6	2	10	3	GR. B	2	2	1	10	3
GR. C	1	1	1	0	0	GR. C	1	0	1	0	0
GR. D	0	1	1	0	0	GR. D	0	1	1	0	0
GR. E	0	0	1	2	3	GR. E	0	0	1	2	3

DEAL POST TEST 2019-20 - SCHOOL REPORT CARD

PONDY
DIS Z5

34020304805 **GPS, VINAYAGAMPET**

All Grades represent the following scorings in % *

GRADE A - >75	* School Status Grade represents the total enrollment of the school (Not %)
GRADE B - 51 TO 75	
GRADE C - 26 TO 50	
GRADE D - 10 TO 25	
GRADE E - <10	

Note: The Values given in the brackets denote the difference between the Pre and Post Test Scores.
(For Example: If the Pre-Test Grade is 'C' and the Post-Test Grade is 'A', then the progress is +2)

SCHOOL GRADE - CB

Status Gr. C (0) Performance Gr. B (0)

OVERALL PERFORMANCE GRADES

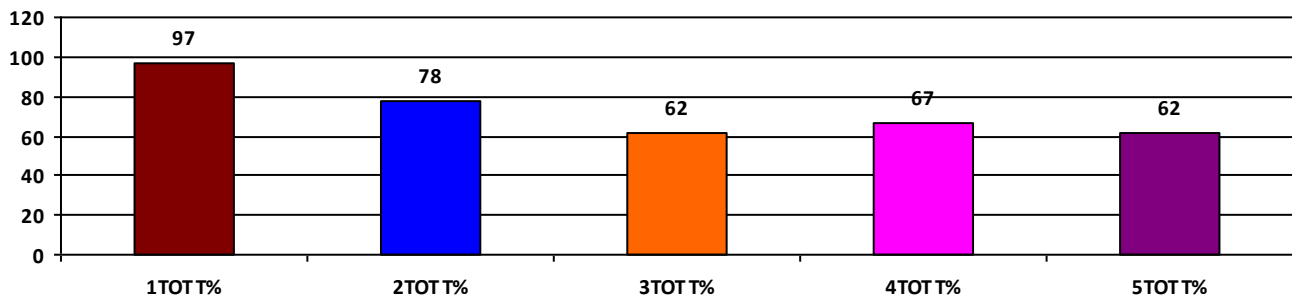
	Boys	Girls	Total
SCHOOL GR.	B	A	B
Diff. to Pre-Test	(+1)	(+1)	(0)
DIST. GR.	B	B	B
STATE GR.	B	B	B

CLASSWISE APPEARED

DETAILS	I STD	II STD	III STD	IV STD	V STD
BOYS	1	3	4	3	8
GIRLS	4	6	3	7	7
TOTAL	5	9	7	10	15
Diff. to Pre-Test	(0)	(+1)	(0)	(0)	(0)

CLASSWISE PERFORMANCE GRADES (% of marks)

DETAILS	I STD	II STD	III STD	IV STD	V STD
%	97	78	62	67	62
SCHOOL GR.	A	A	B	B	B
Diff. to Pre-Test	(+1)	(+1)	(0)	(+1)	(0)
DIST. GR.	A	B	B	B	B
STATE GR.	A	B	B	B	B



GRADEWISE PERFORMANCE (NO. OF STUDENTS)

ENGLISH	1 Std	2 Std	3 Std	4 Std	5 Std	TAMIL	1 Std	2 Std	3 Std	4 Std	5 Std
GR. A	5	8	1	2	4	GR. A	5	5	2	3	5
GR. B	0	1	4	7	7	GR. B	0	1	3	6	4
GR. C	0	0	2	1	3	GR. C	0	3	2	1	5
GR. D	0	0	0	0	1	GR. D	0	0	0	0	1
GR. E	0	0	0	0	0	GR. E	0	0	0	0	0

DEAL POST TEST 2019-20 - SCHOOL REPORT CARD

PONDY
DIS Z5

34020305002 **GPS, THIRUVANDARKOIL**

All Grades represent the following scorings in % *

GRADE A - >75	
GRADE B - 51 TO 75	* School Status Grade
GRADE C - 26 TO 50	represents the total
GRADE D - 10 TO 25	enrollment of the
GRADE E - <10	school (Not %)

Note: The Values given in the brackets denote the difference between the Pre and Post Test Scores.
(For Example: If the Pre-Test Grade is 'C' and the Post-Test Grade is 'A', then the progress is +2)

SCHOOL GRADE - AB

Status Gr. A (0)	Performance Gr. B (0)
------------------	-----------------------

OVERALL PERFORMANCE GRADES

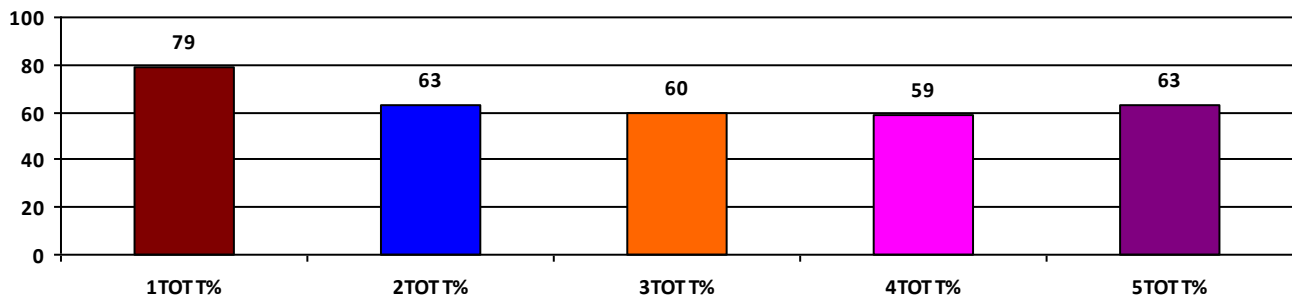
	Boys	Girls	Total
SCHOOL GR.	B	B	B
Diff. to Pre-Test	(+1)	(0)	(0)
DIST. GR.	B	B	B
STATE GR.	B	B	B

CLASSWISE APPEARED

DETAILS	I STD	II STD	III STD	IV STD	V STD
BOYS	7	16	17	13	24
GIRLS	16	15	16	18	19
TOTAL	23	31	33	31	43
Diff. to Pre-Test	(0)	(0)	(-1)	(-1)	(0)

CLASSWISE PERFORMANCE GRADES (% of marks)

DETAILS	I STD	II STD	III STD	IV STD	V STD
%	79	63	60	59	63
SCHOOL GR.	A	B	B	B	B
Diff. to Pre-Test	(+1)	(+1)	(0)	(+1)	(0)
DIST. GR.	A	B	B	B	B
STATE GR.	A	B	B	B	B



GRADEWISE PERFORMANCE (NO. OF STUDENTS)

ENGLISH	1 Std	2 Std	3 Std	4 Std	5 Std	TAMIL	1 Std	2 Std	3 Std	4 Std	5 Std
GR. A	13	7	5	7	8	GR. A	16	14	16	16	17
GR. B	6	11	10	12	25	GR. B	5	7	8	7	19
GR. C	3	11	18	6	8	GR. C	2	9	9	2	4
GR. D	1	2	0	5	2	GR. D	0	1	0	5	3
GR. E	0	0	0	1	0	GR. E	0	0	0	1	0

DEAL POST TEST 2019-20 - SCHOOL REPORT CARD

PONDY
DIS Z5

34020305201 **GPS, THETHAMPAKKAM**

All Grades represent the following scorings in % *

GRADE A - >75	* School Status Grade represents the total enrollment of the school (Not %)
GRADE B - 51 TO 75	
GRADE C - 26 TO 50	
GRADE D - 10 TO 25	
GRADE E - <10	

Note: The Values given in the brackets denote the difference between the Pre and Post Test Scores.
(For Example: If the Pre-Test Grade is 'C' and the Post-Test Grade is 'A', then the progress is +2)

SCHOOL GRADE - CB

Status Gr. C (0) Performance Gr. B(+1)

OVERALL PERFORMANCE GRADES

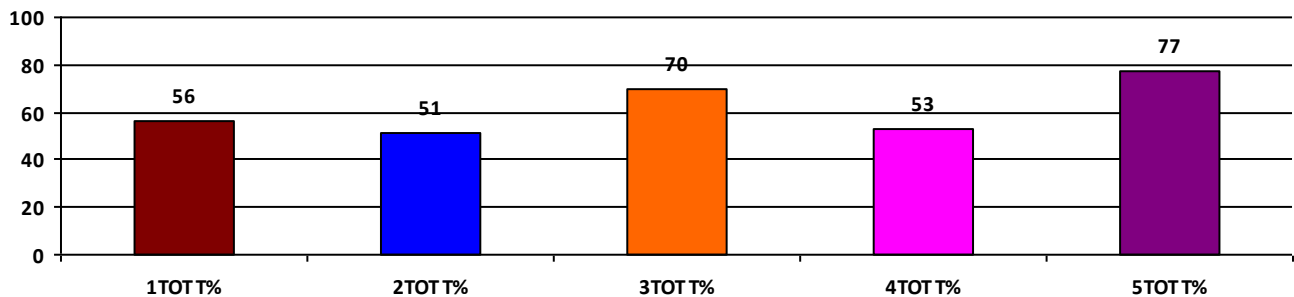
	Boys	Girls	Total
SCHOOL GR.	B	B	B
Diff. to Pre-Test	(+1)	(0)	(+1)
DIST. GR.	B	B	B
STATE GR.	B	B	B

CLASSWISE APPEARED

DETAILS	I STD	II STD	III STD	IV STD	V STD
BOYS	0	2	1	6	2
GIRLS	3	7	4	1	4
TOTAL	3	9	5	7	6
Diff. to Pre-Test	(-1)	(0)	(0)	(0)	(0)

CLASSWISE PERFORMANCE GRADES (% of marks)

DETAILS	I STD	II STD	III STD	IV STD	V STD
%	56	51	70	53	77
SCHOOL GR.	B	B	B	B	A
Diff. to Pre-Test	(0)	(+1)	(0)	(+1)	(+1)
DIST. GR.	A	B	B	B	B
STATE GR.	A	B	B	B	B



GRADEWISE PERFORMANCE (NO. OF STUDENTS)

ENGLISH	1 Std	2 Std	3 Std	4 Std	5 Std	TAMIL	1 Std	2 Std	3 Std	4 Std	5 Std
GR. A	0	1	2	0	3	GR. A	1	0	2	5	4
GR. B	0	6	2	2	2	GR. B	2	3	3	0	1
GR. C	2	1	1	3	1	GR. C	0	5	0	1	1
GR. D	1	1	0	2	0	GR. D	0	1	0	1	0
GR. E	0	0	0	0	0	GR. E	0	0	0	0	0

DEAL POST TEST 2019-20 - SCHOOL REPORT CARD

PONDY
DIS Z5

34020305301 **GPS, THIRUBUVANAIPET**

All Grades represent the following scorings in % *

GRADE A - >75	* School Status Grade represents the total enrollment of the school (Not %)
GRADE B - 51 TO 75	
GRADE C - 26 TO 50	
GRADE D - 10 TO 25	
GRADE E - <10	

Note: The Values given in the brackets denote the difference between the Pre and Post Test Scores.
(For Example: If the Pre-Test Grade is 'C' and the Post-Test Grade is 'A', then the progress is +2)

SCHOOL GRADE - CB

Status Gr. C (0) Performance Gr. B(+1)

OVERALL PERFORMANCE GRADES

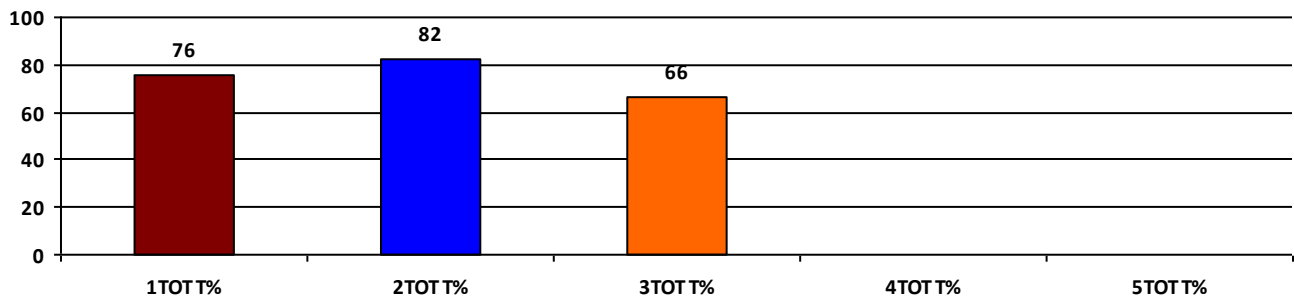
	Boys	Girls	Total
SCHOOL GR.	A	B	B
Diff. to Pre-Test	(+1)	(+1)	(+1)
DIST. GR.	B	B	B
STATE GR.	B	B	B

CLASSWISE APPEARED

DETAILS	I STD	II STD	III STD	IV STD	V STD
BOYS	2	4	6	0	0
GIRLS	3	5	10	0	0
TOTAL	5	9	16	0	0
Diff. to Pre-Test	(-2)	(0)	(+1)	(0)	(0)

CLASSWISE PERFORMANCE GRADES (% of marks)

DETAILS	I STD	II STD	III STD	IV STD	V STD
%	76	82	66	NA	NA
SCHOOL GR.	A	A	B	NA	NA
Diff. to Pre-Test	(+1)	(+1)	(+1)	(+8)	(+8)
DIST. GR.	A	B	B	B	B
STATE GR.	A	B	B	B	B



GRADEWISE PERFORMANCE (NO. OF STUDENTS)

ENGLISH	1 Std	2 Std	3 Std	4 Std	5 Std	TAMIL	1 Std	2 Std	3 Std	4 Std	5 Std
GR. A	3	8	4	0	0	GR. A	4	7	6	0	0
GR. B	2	0	10	0	0	GR. B	1	1	7	0	0
GR. C	0	0	1	0	0	GR. C	0	0	2	0	0
GR. D	0	0	0	0	0	GR. D	0	0	0	0	0
GR. E	0	1	1	0	0	GR. E	0	1	1	0	0

DEAL POST TEST 2019-20 - SCHOOL REPORT CARD

PONDY
DIS Z5

34020305501 **GPS, THONDAMANATHAM**

All Grades represent the following scorings in % *

GRADE A - >75	
GRADE B - 51 TO 75	* School Status Grade
GRADE C - 26 TO 50	represents the total
GRADE D - 10 TO 25	enrollment of the
GRADE E - <10	school (Not %)

Note: The Values given in the brackets denote the difference between the Pre and Post Test Scores.
(For Example: If the Pre-Test Grade is 'C' and the Post-Test Grade is 'A', then the progress is +2)

SCHOOL GRADE - AB

Status Gr. A (0)	Performance Gr. B (0)
------------------	-----------------------

OVERALL PERFORMANCE GRADES

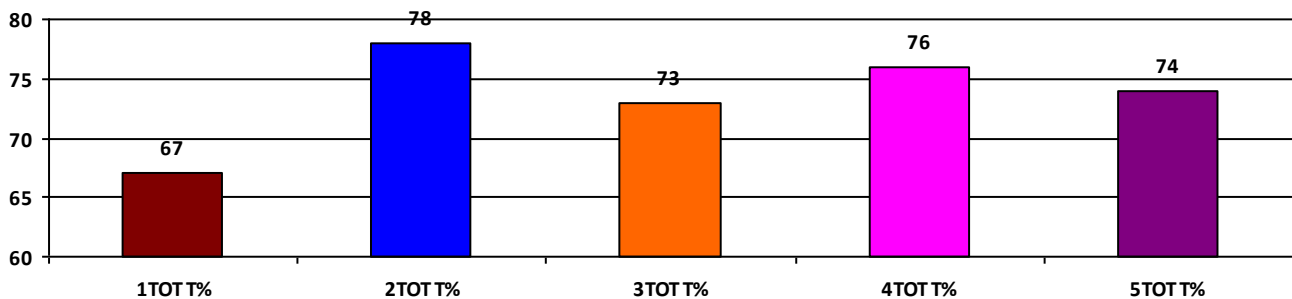
	Boys	Girls	Total
SCHOOL GR.	B	B	B
Diff. to Pre-Test	(0)	(0)	(0)
DIST. GR.	B	B	B
STATE GR.	B	B	B

CLASSWISE APPEARED

DETAILS	I STD	II STD	III STD	IV STD	V STD
BOYS	4	11	11	9	9
GIRLS	8	8	8	7	6
TOTAL	12	19	19	16	15
Diff. to Pre-Test	(0)	(0)	(0)	(+2)	(+1)

CLASSWISE PERFORMANCE GRADES (% of marks)

DETAILS	I STD	II STD	III STD	IV STD	V STD
%	67	78	73	76	74
SCHOOL GR.	B	A	B	A	B
Diff. to Pre-Test	(0)	(+1)	(+1)	(+1)	(0)
DIST. GR.	A	B	B	B	B
STATE GR.	A	B	B	B	B



GRADEWISE PERFORMANCE (NO. OF STUDENTS)

ENGLISH	1 Std	2 Std	3 Std	4 Std	5 Std	TAMIL	1 Std	2 Std	3 Std	4 Std	5 Std
GR. A	3	12	12	5	10	GR. A	8	14	10	13	10
GR. B	6	2	5	11	4	GR. B	2	0	4	2	2
GR. C	2	3	0	0	1	GR. C	1	4	3	1	3
GR. D	1	2	1	0	0	GR. D	0	1	1	0	0
GR. E	0	0	1	0	0	GR. E	1	0	1	0	0

DEAL POST TEST 2019-20 - SCHOOL REPORT CARD

PONDY
DIS Z5

34020305601 **GPS, THUTHIPET**

All Grades represent the following scorings in % *

GRADE A - >75	* School Status Grade represents the total enrollment of the school (Not %)
GRADE B - 51 TO 75	
GRADE C - 26 TO 50	
GRADE D - 10 TO 25	
GRADE E - <10	

Note: The Values given in the brackets denote the difference between the Pre and Post Test Scores.
(For Example: If the Pre-Test Grade is 'C' and the Post-Test Grade is 'A', then the progress is +2)

SCHOOL GRADE - CA

Status Gr. C (0) Performance Gr. A(+2)

OVERALL PERFORMANCE GRADES

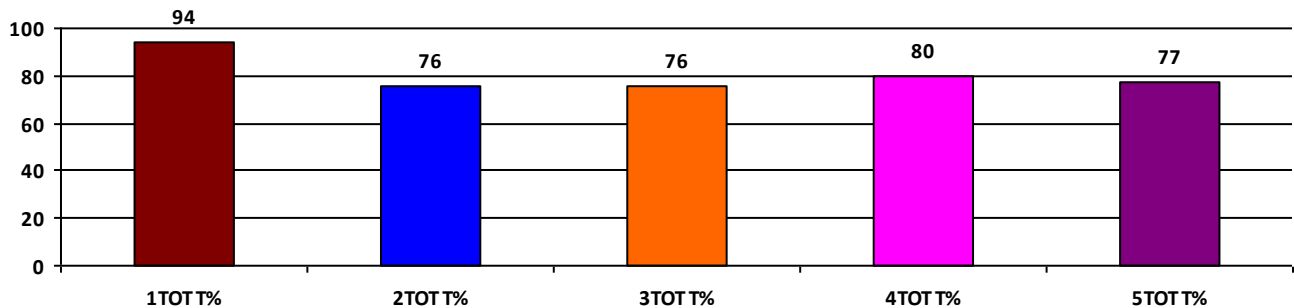
	Boys	Girls	Total
SCHOOL GR.	A	A	A
Diff. to Pre-Test	(+2)	(+1)	(+2)
DIST. GR.	B	B	B
STATE GR.	B	B	B

CLASSWISE APPEARED

DETAILS	I STD	II STD	III STD	IV STD	V STD
BOYS	1	3	8	9	5
GIRLS	5	4	3	2	5
TOTAL	6	7	11	11	10
Diff. to Pre-Test	(+1)	(+1)	(0)	(0)	(0)

CLASSWISE PERFORMANCE GRADES (% of marks)

DETAILS	I STD	II STD	III STD	IV STD	V STD
%	94	76	76	80	77
SCHOOL GR.	A	A	A	A	A
Diff. to Pre-Test	(0)	(+2)	(+2)	(+2)	(+1)
DIST. GR.	A	B	B	B	B
STATE GR.	A	B	B	B	B



GRADEWISE PERFORMANCE (NO. OF STUDENTS)

ENGLISH	1 Std	2 Std	3 Std	4 Std	5 Std	TAMIL	1 Std	2 Std	3 Std	4 Std	5 Std
GR. A	6	5	9	9	8	GR. A	5	4	8	10	8
GR. B	0	2	0	1	0	GR. B	1	2	1	0	0
GR. C	0	0	0	0	0	GR. C	0	0	0	0	0
GR. D	0	0	0	0	0	GR. D	0	1	0	0	0
GR. E	0	0	2	1	2	GR. E	0	0	2	1	2

DEAL POST TEST 2019-20 - SCHOOL REPORT CARD

PONDY
DIS Z5

34020306003 **GPS, P.S. PALAYAM**

All Grades represent the following scorings in % *

GRADE A - >75	
GRADE B - 51 TO 75	* School Status Grade
GRADE C - 26 TO 50	represents the total
GRADE D - 10 TO 25	enrollment of the
GRADE E - <10	school (Not %)

Note: The Values given in the brackets denote the difference between the Pre and Post Test Scores.
(For Example: If the Pre-Test Grade is 'C' and the Post-Test Grade is 'A', then the progress is +2)

SCHOOL GRADE - AA

Status Gr. A (0) Performance Gr. A(+2)

OVERALL PERFORMANCE GRADES

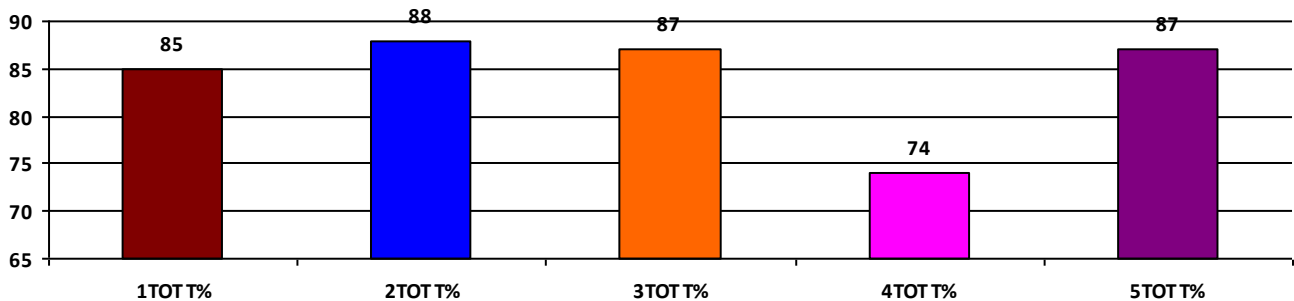
	Boys	Girls	Total
SCHOOL GR.	A	A	A
Diff. to Pre-Test	(+2)	(+2)	(+2)
DIST. GR.	B	B	B
STATE GR.	B	B	B

CLASSWISE APPEARED

DETAILS	I STD	II STD	III STD	IV STD	V STD
BOYS	8	8	11	14	21
GIRLS	5	11	12	14	17
TOTAL	13	19	23	28	38
Diff. to Pre-Test	(+1)	(+2)	(+1)	(+2)	(+5)

CLASSWISE PERFORMANCE GRADES (% of marks)

DETAILS	I STD	II STD	III STD	IV STD	V STD
%	85	88	87	74	87
SCHOOL GR.	A	A	A	B	A
Diff. to Pre-Test	(+1)	(+2)	(+2)	(+1)	(+2)
DIST. GR.	A	B	B	B	B
STATE GR.	A	B	B	B	B



GRADEWISE PERFORMANCE (NO. OF STUDENTS)

ENGLISH	1 Std	2 Std	3 Std	4 Std	5 Std	TAMIL	1 Std	2 Std	3 Std	4 Std	5 Std
GR. A	9	15	22	14	33	GR. A	11	16	22	17	28
GR. B	4	2	0	9	5	GR. B	2	2	0	8	10
GR. C	0	1	0	4	0	GR. C	0	0	0	2	0
GR. D	0	1	0	0	0	GR. D	0	1	0	0	0
GR. E	0	0	1	1	0	GR. E	0	0	1	1	0

DEAL POST TEST 2019-20 - SCHOOL REPORT CARD

PONDY
DIS Z5

34020306101 **GPS, VAMBUPET**

All Grades represent the following scorings in % *

GRADE A - >75	* School Status Grade represents the total enrollment of the school (Not %)
GRADE B - 51 TO 75	
GRADE C - 26 TO 50	
GRADE D - 10 TO 25	
GRADE E - <10	

Note: The Values given in the brackets denote the difference between the Pre and Post Test Scores.
(For Example: If the Pre-Test Grade is 'C' and the Post-Test Grade is 'A', then the progress is +2)

SCHOOL GRADE - CB

Status Gr. C (0) Performance Gr. B (0)

OVERALL PERFORMANCE GRADES

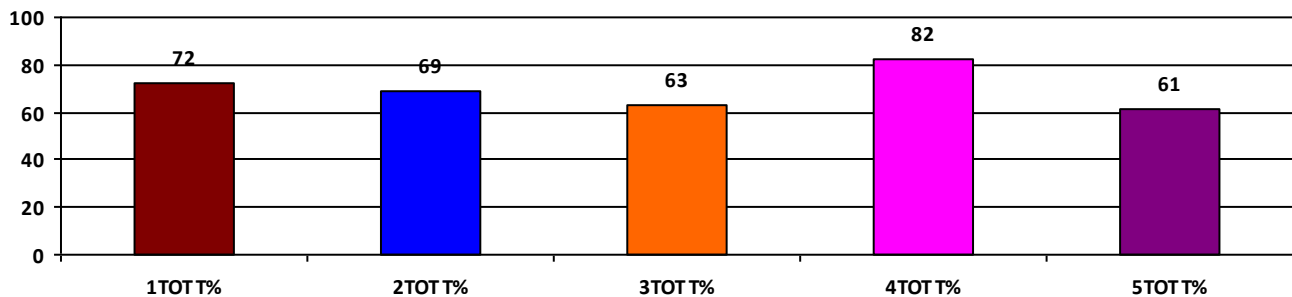
	Boys	Girls	Total
SCHOOL GR.	B	B	B
Diff. to Pre-Test	(0)	(0)	(0)
DIST. GR.	B	B	B
STATE GR.	B	B	B

CLASSWISE APPEARED

DETAILS	I STD	II STD	III STD	IV STD	V STD
BOYS	4	5	6	4	5
GIRLS	2	6	2	2	2
TOTAL	6	11	8	6	7
Diff. to Pre-Test	(+1)	(+1)	(0)	(+1)	(0)

CLASSWISE PERFORMANCE GRADES (% of marks)

DETAILS	I STD	II STD	III STD	IV STD	V STD
%	72	69	63	82	61
SCHOOL GR.	B	B	B	A	B
Diff. to Pre-Test	(0)	(0)	(+1)	(0)	(0)
DIST. GR.	A	B	B	B	B
STATE GR.	A	B	B	B	B



GRADEWISE PERFORMANCE (NO. OF STUDENTS)

ENGLISH	1 Std	2 Std	3 Std	4 Std	5 Std	TAMIL	1 Std	2 Std	3 Std	4 Std	5 Std
GR. A	2	2	0	2	2	GR. A	4	5	2	6	3
GR. B	3	8	8	4	1	GR. B	2	6	6	0	3
GR. C	1	0	0	0	4	GR. C	0	0	0	0	1
GR. D	0	0	0	0	0	GR. D	0	0	0	0	0
GR. E	0	1	0	0	0	GR. E	0	0	0	0	0

DEAL POST TEST 2019-20 - SCHOOL REPORT CARD

PONDY
DIS Z5

34020306202 **GBPS, VILLIANUR**

All Grades represent the following scorings in % *

GRADE A - >75	* School Status Grade represents the total enrollment of the school (Not %)
GRADE B - 51 TO 75	
GRADE C - 26 TO 50	
GRADE D - 10 TO 25	
GRADE E - <10	

Note: The Values given in the brackets denote the difference between the Pre and Post Test Scores.
(For Example: If the Pre-Test Grade is 'C' and the Post-Test Grade is 'A', then the progress is +2)

SCHOOL GRADE - AA

Status Gr. A (0) Performance Gr. A(+1)

OVERALL PERFORMANCE GRADES

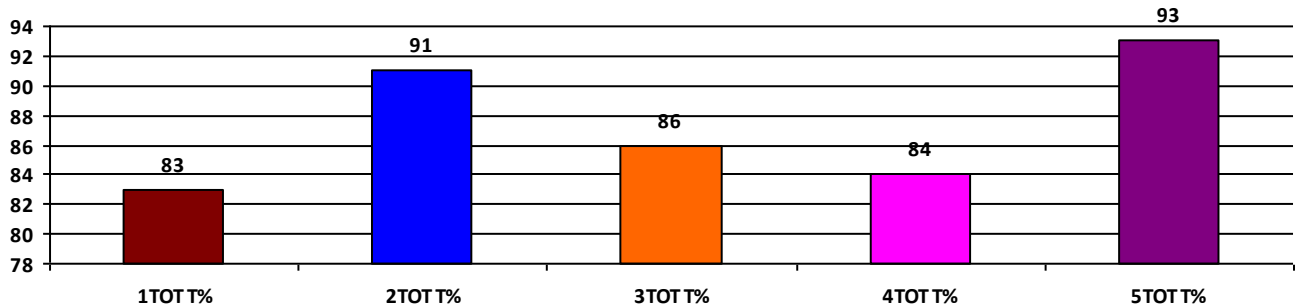
	Boys	Girls	Total
SCHOOL GR.	A	NA	A
Diff. to Pre-Test	(+1)	(+8)	(+1)
DIST. GR.	B	B	B
STATE GR.	B	B	B

CLASSWISE APPEARED

DETAILS	I STD	II STD	III STD	IV STD	V STD
BOYS	8	17	20	13	30
GIRLS	0	0	0	0	0
TOTAL	8	17	20	13	30
Diff. to Pre-Test	(0)	(+1)	(+1)	(0)	(0)

CLASSWISE PERFORMANCE GRADES (% of marks)

DETAILS	I STD	II STD	III STD	IV STD	V STD
%	83	91	86	84	93
SCHOOL GR.	A	A	A	A	A
Diff. to Pre-Test	(+1)	(+1)	(0)	(+1)	(+1)
DIST. GR.	A	B	B	B	B
STATE GR.	A	B	B	B	B



GRADEWISE PERFORMANCE (NO. OF STUDENTS)

ENGLISH	1 Std	2 Std	3 Std	4 Std	5 Std	TAMIL	1 Std	2 Std	3 Std	4 Std	5 Std
GR. A	6	15	17	10	28	GR. A	6	17	18	11	28
GR. B	0	2	1	1	1	GR. B	1	0	0	1	1
GR. C	2	0	1	1	0	GR. C	0	0	1	1	0
GR. D	0	0	0	1	0	GR. D	1	0	0	0	0
GR. E	0	0	1	0	1	GR. E	0	0	1	0	1

DEAL POST TEST 2019-20 - SCHOOL REPORT CARD

PONDY
DIS Z5

34020306601 **GPS, MADAGADIPET**

All Grades represent the following scorings in % *

GRADE A - >75	
GRADE B - 51 TO 75	* School Status Grade
GRADE C - 26 TO 50	represents the total
GRADE D - 10 TO 25	enrollment of the
GRADE E - <10	school (Not %)

Note: The Values given in the brackets denote the difference between the Pre and Post Test Scores.
(For Example: If the Pre-Test Grade is 'C' and the Post-Test Grade is 'A', then the progress is +2)

SCHOOL GRADE - BB

Status Gr. B (0) Performance Gr. B (0)

OVERALL PERFORMANCE GRADES

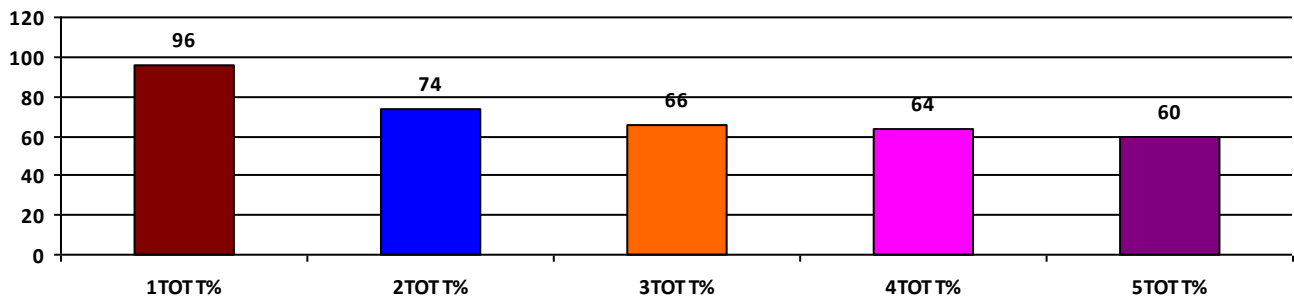
	Boys	Girls	Total
SCHOOL GR.	B	B	B
Diff. to Pre-Test	(+1)	(0)	(0)
DIST. GR.	B	B	B
STATE GR.	B	B	B

CLASSWISE APPEARED

DETAILS	I STD	II STD	III STD	IV STD	V STD
BOYS	2	4	4	11	7
GIRLS	3	10	6	8	8
TOTAL	5	14	10	19	15
Diff. to Pre-Test	(-1)	(-1)	(-2)	(+1)	(0)

CLASSWISE PERFORMANCE GRADES (% of marks)

DETAILS	I STD	II STD	III STD	IV STD	V STD
%	96	74	66	64	60
SCHOOL GR.	A	B	B	B	B
Diff. to Pre-Test	(+1)	(0)	(0)	(0)	(0)
DIST. GR.	A	B	B	B	B
STATE GR.	A	B	B	B	B



GRADEWISE PERFORMANCE (NO. OF STUDENTS)

ENGLISH	1 Std	2 Std	3 Std	4 Std	5 Std	TAMIL	1 Std	2 Std	3 Std	4 Std	5 Std
GR. A	5	8	3	6	5	GR. A	5	8	5	12	7
GR. B	0	3	3	3	3	GR. B	0	2	3	5	3
GR. C	0	3	3	7	5	GR. C	0	4	2	0	3
GR. D	0	0	1	2	1	GR. D	0	0	0	1	1
GR. E	0	0	0	1	1	GR. E	0	0	0	1	1

DEAL POST TEST 2019-20 - SCHOOL REPORT CARD

PONDY
DIS Z5

34020306606 **GPS, NALLUR**

All Grades represent the following scorings in % *

GRADE A - >75	
GRADE B - 51 TO 75	* School Status Grade
GRADE C - 26 TO 50	represents the total
GRADE D - 10 TO 25	enrollment of the
GRADE E - <10	school (Not %)

Note: The Values given in the brackets denote the difference between the Pre and Post Test Scores.
(For Example: If the Pre-Test Grade is 'C' and the Post-Test Grade is 'A', then the progress is +2)

SCHOOL GRADE - BB

Status Gr. B (0) Performance Gr. B(+1)

OVERALL PERFORMANCE GRADES

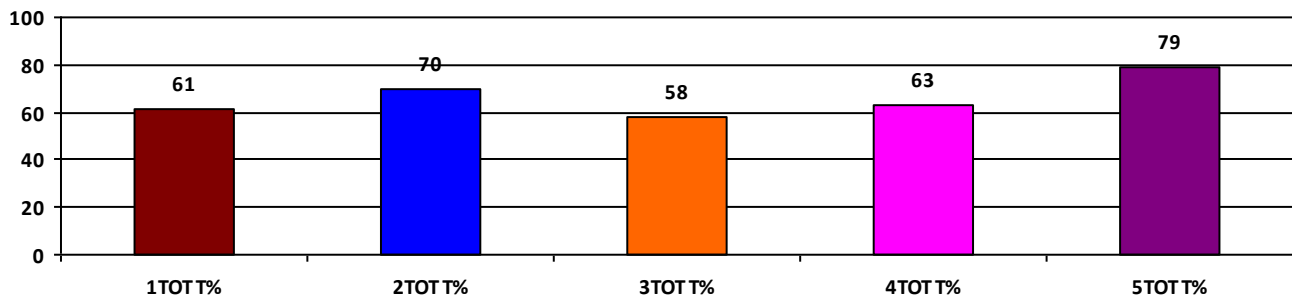
	Boys	Girls	Total
SCHOOL GR.	B	B	B
Diff. to Pre-Test	(+1)	(0)	(+1)
DIST. GR.	B	B	B
STATE GR.	B	B	B

CLASSWISE APPEARED

DETAILS	I STD	II STD	III STD	IV STD	V STD
BOYS	9	5	5	10	5
GIRLS	10	7	8	6	2
TOTAL	19	12	13	16	7
Diff. to Pre-Test	(+1)	(0)	(+3)	(0)	(0)

CLASSWISE PERFORMANCE GRADES (% of marks)

DETAILS	I STD	II STD	III STD	IV STD	V STD
%	61	70	58	63	79
SCHOOL GR.	B	B	B	B	A
Diff. to Pre-Test	(+1)	(+1)	(+1)	(+1)	(+1)
DIST. GR.	A	B	B	B	B
STATE GR.	A	B	B	B	B



GRADEWISE PERFORMANCE (NO. OF STUDENTS)

ENGLISH	1 Std	2 Std	3 Std	4 Std	5 Std	TAMIL	1 Std	2 Std	3 Std	4 Std	5 Std
GR. A	1	1	3	1	6	GR. A	10	9	5	11	6
GR. B	9	8	6	10	0	GR. B	5	2	2	3	0
GR. C	8	2	2	3	0	GR. C	4	0	4	0	0
GR. D	1	1	2	1	0	GR. D	0	1	1	1	0
GR. E	0	0	0	1	1	GR. E	0	0	1	1	1

DEAL POST TEST 2019-20 - SCHOOL REPORT CARD

PONDY
DIS Z5

34020306704 **GPS, KAIKALAPET**

All Grades represent the following scorings in % *

GRADE A - >75	
GRADE B - 51 TO 75	* School Status Grade
GRADE C - 26 TO 50	represents the total
GRADE D - 10 TO 25	enrollment of the
GRADE E - <10	school (Not %)

Note: The Values given in the brackets denote the difference between the Pre and Post Test Scores.
(For Example: If the Pre-Test Grade is 'C' and the Post-Test Grade is 'A', then the progress is +2)

SCHOOL GRADE - DA

Status Gr. D (0) Performance Gr. A (0)

OVERALL PERFORMANCE GRADES

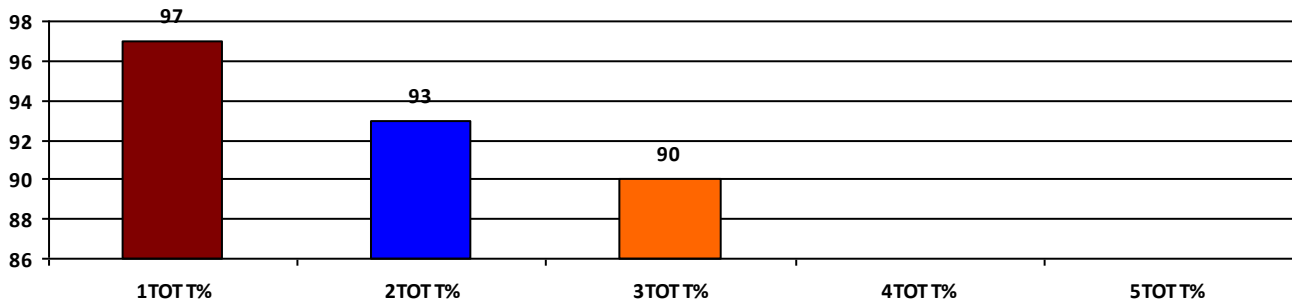
	Boys	Girls	Total
SCHOOL GR.	A	A	A
Diff. to Pre-Test	(0)	(0)	(0)
DIST. GR.	B	B	B
STATE GR.	B	B	B

CLASSWISE APPEARED

DETAILS	I STD	II STD	III STD	IV STD	V STD
BOYS	3	2	5	0	0
GIRLS	5	3	1	0	0
TOTAL	8	5	6	0	0
Diff. to Pre-Test	(0)	(0)	(0)	(0)	(0)

CLASSWISE PERFORMANCE GRADES (% of marks)

DETAILS	I STD	II STD	III STD	IV STD	V STD
%	97	93	90	NA	NA
SCHOOL GR.	A	A	A	NA	NA
Diff. to Pre-Test	(0)	(0)	(+1)	(+8)	(+8)
DIST. GR.	A	B	B	B	B
STATE GR.	A	B	B	B	B



GRADEWISE PERFORMANCE (NO. OF STUDENTS)

ENGLISH	1 Std	2 Std	3 Std	4 Std	5 Std	TAMIL	1 Std	2 Std	3 Std	4 Std	5 Std
GR. A	8	4	5	0	0	GR. A	8	5	6	0	0
GR. B	0	1	1	0	0	GR. B	0	0	0	0	0
GR. C	0	0	0	0	0	GR. C	0	0	0	0	0
GR. D	0	0	0	0	0	GR. D	0	0	0	0	0
GR. E	0	0	0	0	0	GR. E	0	0	0	0	0

DEAL POST TEST 2019-20 - SCHOOL REPORT CARD

PONDY
DIS Z5

34020306705 **GPS, KUMARAPALAYAM**

All Grades represent the following scorings in % *

GRADE A - >75	* School Status Grade represents the total enrollment of the school (Not %)
GRADE B - 51 TO 75	
GRADE C - 26 TO 50	
GRADE D - 10 TO 25	
GRADE E - <10	

Note: The Values given in the brackets denote the difference between the Pre and Post Test Scores.
(For Example: If the Pre-Test Grade is 'C' and the Post-Test Grade is 'A', then the progress is +2)

SCHOOL GRADE - CB

Status Gr. C (0) Performance Gr. B (0)

OVERALL PERFORMANCE GRADES

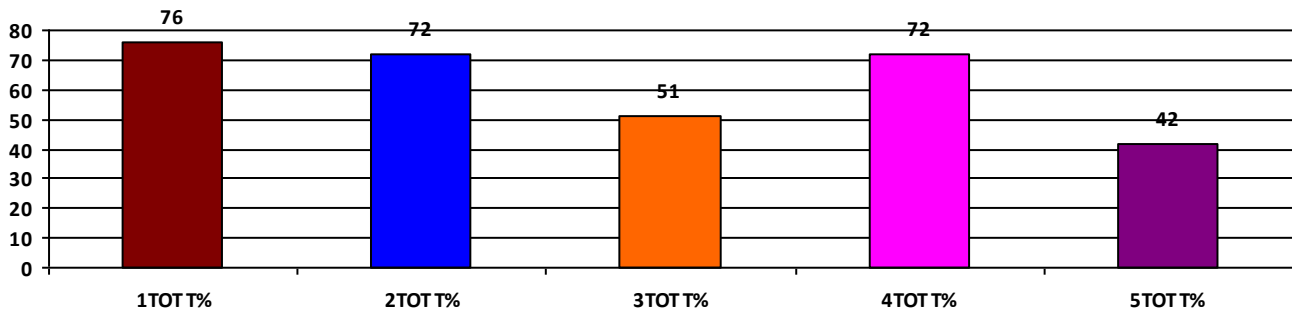
	Boys	Girls	Total
SCHOOL GR.	B	B	B
Diff. to Pre-Test	(+1)	(0)	(0)
DIST. GR.	B	B	B
STATE GR.	B	B	B

CLASSWISE APPEARED

DETAILS	I STD	II STD	III STD	IV STD	V STD
BOYS	4	3	1	4	1
GIRLS	3	5	4	3	2
TOTAL	7	8	5	7	3
Diff. to Pre-Test	(0)	(-1)	(0)	(0)	(-1)

CLASSWISE PERFORMANCE GRADES (% of marks)

DETAILS	I STD	II STD	III STD	IV STD	V STD
%	76	72	51	72	42
SCHOOL GR.	A	B	B	B	C
Diff. to Pre-Test	(+2)	(0)	(+1)	(0)	(-1)
DIST. GR.	A	B	B	B	B
STATE GR.	A	B	B	B	B



GRADEWISE PERFORMANCE (NO. OF STUDENTS)

ENGLISH	1 Std	2 Std	3 Std	4 Std	5 Std	TAMIL	1 Std	2 Std	3 Std	4 Std	5 Std
GR. A	1	4	0	3	1	GR. A	7	4	2	5	1
GR. B	6	3	2	2	0	GR. B	0	2	1	0	0
GR. C	0	0	2	2	1	GR. C	0	1	1	2	1
GR. D	0	1	0	0	0	GR. D	0	1	0	0	0
GR. E	0	0	1	0	1	GR. E	0	0	1	0	1

DEAL POST TEST 2019-20 - SCHOOL REPORT CARD

PONDY
DIS Z5

34020307601 **GPS, AGARAM**

All Grades represent the following scorings in % *

GRADE A - >75	* School Status Grade represents the total enrollment of the school (Not %)
GRADE B - 51 TO 75	
GRADE C - 26 TO 50	
GRADE D - 10 TO 25	
GRADE E - <10	

Note: The Values given in the brackets denote the difference between the Pre and Post Test Scores.
(For Example: If the Pre-Test Grade is 'C' and the Post-Test Grade is 'A', then the progress is +2)

SCHOOL GRADE - DA

Status Gr. D (0) Performance Gr. A (0)

OVERALL PERFORMANCE GRADES

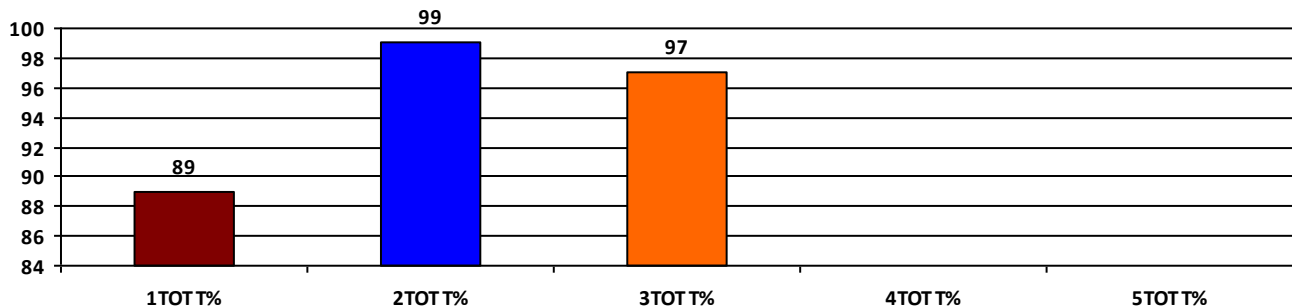
	Boys	Girls	Total
SCHOOL GR.	A	A	A
Diff. to Pre-Test	(0)	(+1)	(0)
DIST. GR.	B	B	B
STATE GR.	B	B	B

CLASSWISE APPEARED

DETAILS	I STD	II STD	III STD	IV STD	V STD
BOYS	4	2	3	0	0
GIRLS	3	0	1	0	0
TOTAL	7	2	4	0	0
Diff. to Pre-Test	(0)	(0)	(0)	(0)	(0)

CLASSWISE PERFORMANCE GRADES (% of marks)

DETAILS	I STD	II STD	III STD	IV STD	V STD
%	89	99	97	NA	NA
SCHOOL GR.	A	A	A	NA	NA
Diff. to Pre-Test	(0)	(0)	(0)	(+8)	(+8)
DIST. GR.	A	B	B	B	B
STATE GR.	A	B	B	B	B



GRADEWISE PERFORMANCE (NO. OF STUDENTS)

ENGLISH	1 Std	2 Std	3 Std	4 Std	5 Std	TAMIL	1 Std	2 Std	3 Std	4 Std	5 Std
GR. A	5	2	4	0	0	GR. A	7	2	4	0	0
GR. B	1	0	0	0	0	GR. B	0	0	0	0	0
GR. C	1	0	0	0	0	GR. C	0	0	0	0	0
GR. D	0	0	0	0	0	GR. D	0	0	0	0	0
GR. E	0	0	0	0	0	GR. E	0	0	0	0	0

DEAL POST TEST 2019-20 - SCHOOL REPORT CARD

PONDY
DIS Z5

34020307602 **GPS, PORAIYURPET**

All Grades represent the following scorings in % *

GRADE A - >75	* School Status Grade represents the total enrollment of the school (Not %)
GRADE B - 51 TO 75	
GRADE C - 26 TO 50	
GRADE D - 10 TO 25	
GRADE E - <10	

Note: The Values given in the brackets denote the difference between the Pre and Post Test Scores.
(For Example: If the Pre-Test Grade is 'C' and the Post-Test Grade is 'A', then the progress is +2)

SCHOOL GRADE - CA

Status Gr. C (0) Performance Gr. A(+1)

OVERALL PERFORMANCE GRADES

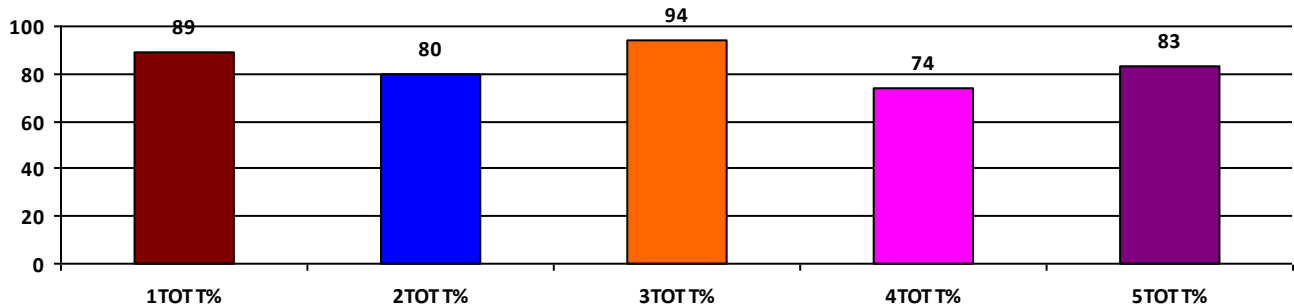
	Boys	Girls	Total
SCHOOL GR.	A	A	A
Diff. to Pre-Test	(+1)	(0)	(+1)
DIST. GR.	B	B	B
STATE GR.	B	B	B

CLASSWISE APPEARED

DETAILS	I STD	II STD	III STD	IV STD	V STD
BOYS	3	5	2	4	7
GIRLS	2	5	1	4	7
TOTAL	5	10	3	8	14
Diff. to Pre-Test	(0)	(+2)	(0)	(+1)	(+1)

CLASSWISE PERFORMANCE GRADES (% of marks)

DETAILS	I STD	II STD	III STD	IV STD	V STD
%	89	80	94	74	83
SCHOOL GR.	A	A	A	B	A
Diff. to Pre-Test	(+1)	(+1)	(0)	(-1)	(0)
DIST. GR.	A	B	B	B	B
STATE GR.	A	B	B	B	B



GRADEWISE PERFORMANCE (NO. OF STUDENTS)

ENGLISH	1 Std	2 Std	3 Std	4 Std	5 Std	TAMIL	1 Std	2 Std	3 Std	4 Std	5 Std
GR. A	4	7	3	4	12	GR. A	4	7	3	6	13
GR. B	1	3	0	2	1	GR. B	1	3	0	1	0
GR. C	0	0	0	1	0	GR. C	0	0	0	1	0
GR. D	0	0	0	1	0	GR. D	0	0	0	0	0
GR. E	0	0	0	0	1	GR. E	0	0	0	0	1

DEAL POST TEST 2019-20 - SCHOOL REPORT CARD

PONDY
DIS Z5

34020307604 **GPS, SENDANATHAM**

All Grades represent the following scorings in % *

GRADE A - >75	
GRADE B - 51 TO 75	* School Status Grade
GRADE C - 26 TO 50	represents the total
GRADE D - 10 TO 25	enrollment of the
GRADE E - <10	school (Not %)

Note: The Values given in the brackets denote the difference between the Pre and Post Test Scores.
(For Example: If the Pre-Test Grade is 'C' and the Post-Test Grade is 'A', then the progress is +2)

SCHOOL GRADE - BA

Status Gr. B (0) Performance Gr. A(+1)

OVERALL PERFORMANCE GRADES

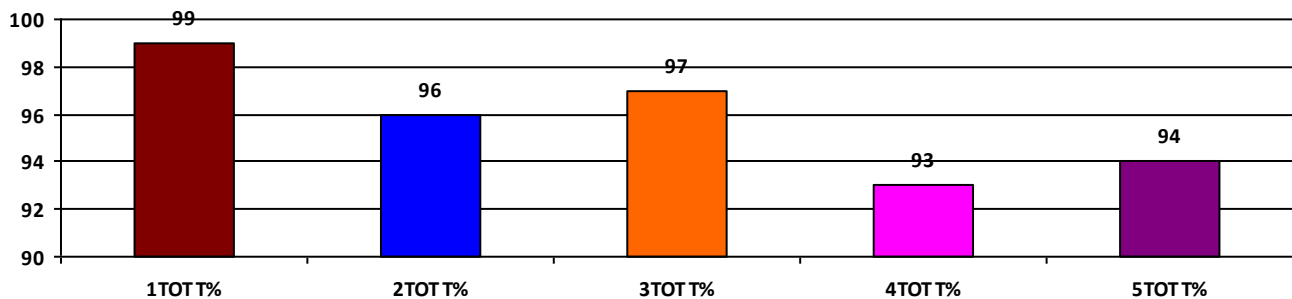
	Boys	Girls	Total
SCHOOL GR.	A	A	A
Diff. to Pre-Test	(+1)	(+1)	(+1)
DIST. GR.	B	B	B
STATE GR.	B	B	B

CLASSWISE APPEARED

DETAILS	I STD	II STD	III STD	IV STD	V STD
BOYS	10	5	7	12	10
GIRLS	3	8	6	4	7
TOTAL	13	13	13	16	17
Diff. to Pre-Test	(-1)	(0)	(0)	(0)	(0)

CLASSWISE PERFORMANCE GRADES (% of marks)

DETAILS	I STD	II STD	III STD	IV STD	V STD
%	99	96	97	93	94
SCHOOL GR.	A	A	A	A	A
Diff. to Pre-Test	(+2)	(+1)	(+2)	(+1)	(+1)
DIST. GR.	A	B	B	B	B
STATE GR.	A	B	B	B	B



GRADEWISE PERFORMANCE (NO. OF STUDENTS)

ENGLISH	1 Std	2 Std	3 Std	4 Std	5 Std	TAMIL	1 Std	2 Std	3 Std	4 Std	5 Std
GR. A	13	12	13	16	17	GR. A	13	12	13	16	16
GR. B	0	1	0	0	0	GR. B	0	1	0	0	0
GR. C	0	0	0	0	0	GR. C	0	0	0	0	0
GR. D	0	0	0	0	0	GR. D	0	0	0	0	1
GR. E	0	0	0	0	0	GR. E	0	0	0	0	0