

DEAL POST TEST 2019-20 - SCHOOL REPORT CARD

PONDY
CEO

34020200701 GHS, ARIANKUPPAM

All Grades represent the following scorings in % *

GRADE A - >75	* School Status Grade represents the total enrollment of the school (Not %)
GRADE B - 51 TO 75	
GRADE C - 26 TO 50	
GRADE D - 10 TO 25	
GRADE E - <10	

Note: The Values given in the brackets denote the difference between the Pre and Post Test Scores.
(For Example: If the Pre-Test Grade is 'C' and the Post-Test Grade is 'A', then the progress is +2)

SCHOOL GRADE - AB

Status Gr. A (0)	Performance Gr. B (0)
------------------	-----------------------

OVERALL PERFORMANCE GRADES

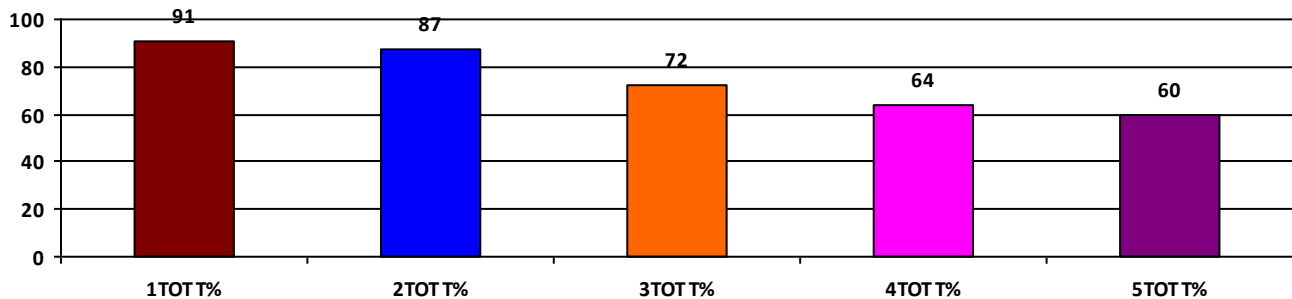
	Boys	Girls	Total
SCHOOL GR.	B	B	B
Diff. to Pre-Test	(0)	(0)	(0)
DIST. GR.	B	B	B
STATE GR.	B	B	B

CLASSWISE APPEARED

DETAILS	I STD	II STD	III STD	IV STD	V STD
BOYS	8	6	6	4	11
GIRLS	6	7	8	14	15
TOTAL	14	13	14	18	26
Diff. to Pre-Test	(-1)	(+2)	(-1)	(0)	(+1)

CLASSWISE PERFORMANCE GRADES (% of marks)

DETAILS	I STD	II STD	III STD	IV STD	V STD
%	91	87	72	64	60
SCHOOL GR.	A	A	B	B	B
Diff. to Pre-Test	(+1)	(+1)	(0)	(+1)	(+1)
DIST. GR.	A	B	B	B	B
STATE GR.	A	B	B	B	B



GRADEWISE PERFORMANCE (NO. OF STUDENTS)

ENGLISH	1 Std	2 Std	3 Std	4 Std	5 Std	TAMIL	1 Std	2 Std	3 Std	4 Std	5 Std
GR. A	12	11	7	1	6	GR. A	12	11	8	1	0
GR. B	2	2	6	16	17	GR. B	2	1	6	15	20
GR. C	0	0	1	1	3	GR. C	0	1	0	2	6
GR. D	0	0	0	0	0	GR. D	0	0	0	0	0
GR. E	0	0	0	0	0	GR. E	0	0	0	0	0

DEAL POST TEST 2019-20 - SCHOOL REPORT CARD

PONDY
CEO

34020201002 GMS, BAHOUR

All Grades represent the following scorings in % *

GRADE A - >75	
GRADE B - 51 TO 75	* School Status Grade
GRADE C - 26 TO 50	represents the total
GRADE D - 10 TO 25	enrollment of the
GRADE E - <10	school (Not %)

Note: The Values given in the brackets denote the difference between the Pre and Post Test Scores.
(For Example: If the Pre-Test Grade is 'C' and the Post-Test Grade is 'A', then the progress is +2)

SCHOOL GRADE - AB

Status Gr. A (0)	Performance Gr. B (0)
------------------	-----------------------

OVERALL PERFORMANCE GRADES

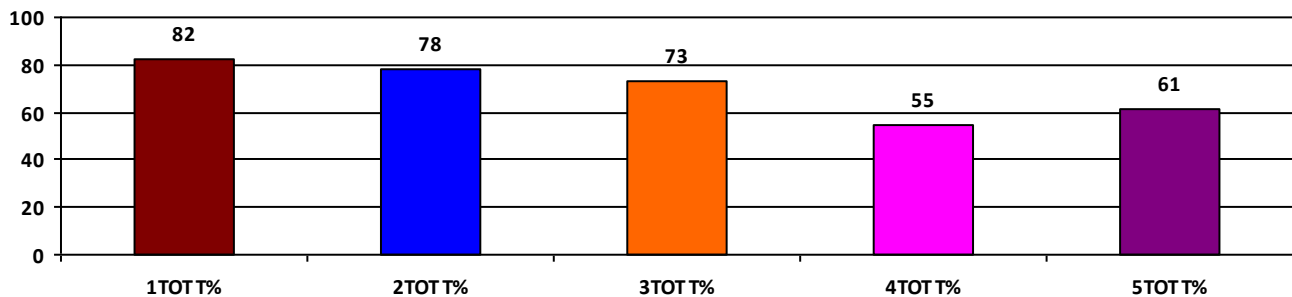
	Boys	Girls	Total
SCHOOL GR.	B	NA	B
Diff. to Pre-Test	(0)	(+8)	(0)
DIST. GR.	B	B	B
STATE GR.	B	B	B

CLASSWISE APPEARED

DETAILS	I STD	II STD	III STD	IV STD	V STD
BOYS	9	18	18	14	19
GIRLS	0	0	0	0	0
TOTAL	9	18	18	14	19
Diff. to Pre-Test	(+1)	(-1)	(+2)	(0)	(+2)

CLASSWISE PERFORMANCE GRADES (% of marks)

DETAILS	I STD	II STD	III STD	IV STD	V STD
%	82	78	73	55	61
SCHOOL GR.	A	A	B	B	B
Diff. to Pre-Test	(+1)	(+1)	(+1)	(0)	(+1)
DIST. GR.	A	B	B	B	B
STATE GR.	A	B	B	B	B



GRADEWISE PERFORMANCE (NO. OF STUDENTS)

ENGLISH	1 Std	2 Std	3 Std	4 Std	5 Std	TAMIL	1 Std	2 Std	3 Std	4 Std	5 Std
GR. A	4	14	8	2	4	GR. A	7	12	11	6	7
GR. B	4	4	8	7	7	GR. B	2	4	5	2	6
GR. C	1	0	1	3	8	GR. C	0	2	1	4	2
GR. D	0	0	0	2	0	GR. D	0	0	0	2	4
GR. E	0	0	1	0	0	GR. E	0	0	1	0	0

DEAL POST TEST 2019-20 - SCHOOL REPORT CARD

PONDY
CEO

34020202101 GMS, KARIAMANIKKAM

All Grades represent the following scorings in % *

GRADE A - >75	
GRADE B - 51 TO 75	* School Status Grade
GRADE C - 26 TO 50	represents the total
GRADE D - 10 TO 25	enrollment of the
GRADE E - <10	school (Not %)

Note: The Values given in the brackets denote the difference between the Pre and Post Test Scores.
(For Example: If the Pre-Test Grade is 'C' and the Post-Test Grade is 'A', then the progress is +2)

SCHOOL GRADE - BA

Status Gr. B (0) Performance Gr. A(+1)

OVERALL PERFORMANCE GRADES

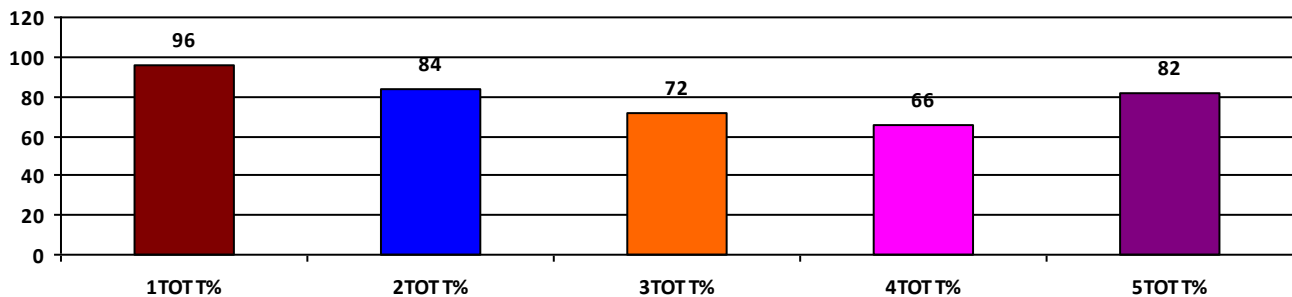
	Boys	Girls	Total
SCHOOL GR.	A	B	A
Diff. to Pre-Test	(+1)	(0)	(+1)
DIST. GR.	B	B	B
STATE GR.	B	B	B

CLASSWISE APPEARED

DETAILS	I STD	II STD	III STD	IV STD	V STD
BOYS	6	6	5	6	5
GIRLS	1	2	8	5	7
TOTAL	7	8	13	11	12
Diff. to Pre-Test	(+1)	(-1)	(0)	(+2)	(+2)

CLASSWISE PERFORMANCE GRADES (% of marks)

DETAILS	I STD	II STD	III STD	IV STD	V STD
%	96	84	72	66	82
SCHOOL GR.	A	A	B	B	A
Diff. to Pre-Test	(+1)	(+2)	(0)	(0)	(+1)
DIST. GR.	A	B	B	B	B
STATE GR.	A	B	B	B	B



GRADEWISE PERFORMANCE (NO. OF STUDENTS)

ENGLISH	1 Std	2 Std	3 Std	4 Std	5 Std	TAMIL	1 Std	2 Std	3 Std	4 Std	5 Std
GR. A	7	6	5	4	10	GR. A	7	7	8	7	10
GR. B	0	2	7	4	2	GR. B	0	1	3	3	2
GR. C	0	0	0	2	0	GR. C	0	0	1	0	0
GR. D	0	0	0	0	0	GR. D	0	0	0	0	0
GR. E	0	0	1	1	0	GR. E	0	0	1	1	0

DEAL POST TEST 2019-20 - SCHOOL REPORT CARD

PONDY
CEO

34020202104 GMS, MOLAPAKKAM

All Grades represent the following scorings in % *

GRADE A - >75	* School Status Grade represents the total enrollment of the school (Not %)
GRADE B - 51 TO 75	
GRADE C - 26 TO 50	
GRADE D - 10 TO 25	
GRADE E - <10	

Note: The Values given in the brackets denote the difference between the Pre and Post Test Scores.
(For Example: If the Pre-Test Grade is 'C' and the Post-Test Grade is 'A', then the progress is +2)

SCHOOL GRADE - CA

Status Gr. C (0) Performance Gr. A(+1)

OVERALL PERFORMANCE GRADES

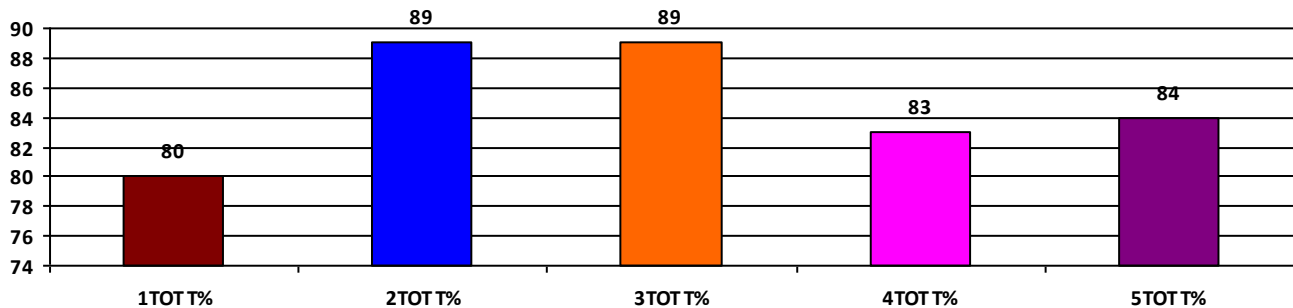
	Boys	Girls	Total
SCHOOL GR.	A	A	A
Diff. to Pre-Test	(+1)	(+2)	(+1)
DIST. GR.	B	B	B
STATE GR.	B	B	B

CLASSWISE APPEARED

DETAILS	I STD	II STD	III STD	IV STD	V STD
BOYS	2	7	5	4	4
GIRLS	2	6	1	6	3
TOTAL	4	13	6	10	7
Diff. to Pre-Test	(0)	(0)	(0)	(0)	(0)

CLASSWISE PERFORMANCE GRADES (% of marks)

DETAILS	I STD	II STD	III STD	IV STD	V STD
%	80	89	89	83	84
SCHOOL GR.	A	A	A	A	A
Diff. to Pre-Test	(+1)	(+2)	(+1)	(+1)	(+1)
DIST. GR.	A	B	B	B	B
STATE GR.	A	B	B	B	B



GRADEWISE PERFORMANCE (NO. OF STUDENTS)

ENGLISH	1 Std	2 Std	3 Std	4 Std	5 Std	TAMIL	1 Std	2 Std	3 Std	4 Std	5 Std
GR. A	4	10	6	9	5	GR. A	1	12	4	9	5
GR. B	0	3	0	1	0	GR. B	3	1	2	1	2
GR. C	0	0	0	0	2	GR. C	0	0	0	0	0
GR. D	0	0	0	0	0	GR. D	0	0	0	0	0
GR. E	0	0	0	0	0	GR. E	0	0	0	0	0

DEAL POST TEST 2019-20 - SCHOOL REPORT CARD

PONDY
CEO

34020202505 **GHS, PANITHITTU**

All Grades represent the following scorings in % *

GRADE A - >75	* School Status Grade represents the total enrollment of the school (Not %)
GRADE B - 51 TO 75	
GRADE C - 26 TO 50	
GRADE D - 10 TO 25	
GRADE E - <10	

Note: The Values given in the brackets denote the difference between the Pre and Post Test Scores.
(For Example: If the Pre-Test Grade is 'C' and the Post-Test Grade is 'A', then the progress is +2)

SCHOOL GRADE - AB

Status Gr. A (0)	Performance Gr. B (0)
------------------	-----------------------

OVERALL PERFORMANCE GRADES

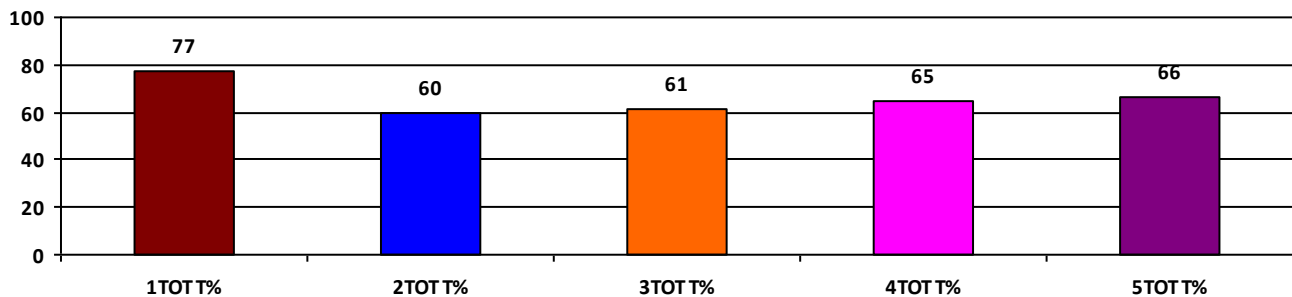
	Boys	Girls	Total
SCHOOL GR.	B	B	B
Diff. to Pre-Test	(+1)	(0)	(0)
DIST. GR.	B	B	B
STATE GR.	B	B	B

CLASSWISE APPEARED

DETAILS	I STD	II STD	III STD	IV STD	V STD
BOYS	6	10	7	10	11
GIRLS	8	6	10	13	5
TOTAL	14	16	17	23	16
Diff. to Pre-Test	(+1)	(-2)	(+1)	(0)	(0)

CLASSWISE PERFORMANCE GRADES (% of marks)

DETAILS	I STD	II STD	III STD	IV STD	V STD
%	77	60	61	65	66
SCHOOL GR.	A	B	B	B	B
Diff. to Pre-Test	(0)	(+1)	(0)	(0)	(0)
DIST. GR.	A	B	B	B	B
STATE GR.	A	B	B	B	B



GRADEWISE PERFORMANCE (NO. OF STUDENTS)

ENGLISH	1 Std	2 Std	3 Std	4 Std	5 Std	TAMIL	1 Std	2 Std	3 Std	4 Std	5 Std
GR. A	9	5	4	6	6	GR. A	8	5	8	11	8
GR. B	4	5	5	10	7	GR. B	5	5	4	9	5
GR. C	1	3	6	4	2	GR. C	1	4	4	2	1
GR. D	0	2	2	2	1	GR. D	0	2	1	0	1
GR. E	0	1	0	1	0	GR. E	0	0	0	1	1

DEAL POST TEST 2019-20 - SCHOOL REPORT CARD

PONDY
CEO

34020203102 GHS, KURUVINATHAM

All Grades represent the following scorings in % *

GRADE A - >75	* School Status Grade represents the total enrollment of the school (Not %)
GRADE B - 51 TO 75	
GRADE C - 26 TO 50	
GRADE D - 10 TO 25	
GRADE E - <10	

Note: The Values given in the brackets denote the difference between the Pre and Post Test Scores.
(For Example: If the Pre-Test Grade is 'C' and the Post-Test Grade is 'A', then the progress is +2)

SCHOOL GRADE - AB

Status Gr. A (0) Performance Gr. B(+1)

OVERALL PERFORMANCE GRADES

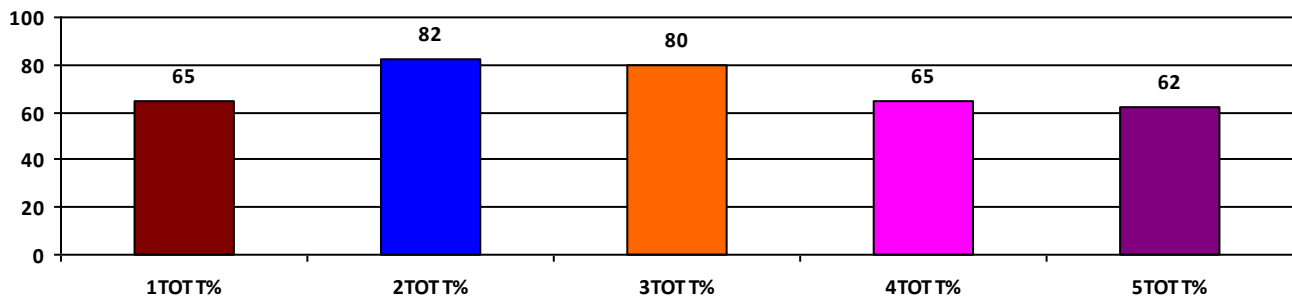
	Boys	Girls	Total
SCHOOL GR.	B	B	B
Diff. to Pre-Test	(+1)	(0)	(+1)
DIST. GR.	B	B	B
STATE GR.	B	B	B

CLASSWISE APPEARED

DETAILS	I STD	II STD	III STD	IV STD	V STD
BOYS	4	3	6	16	11
GIRLS	3	8	12	15	7
TOTAL	7	11	18	31	18
Diff. to Pre-Test	(-1)	(+1)	(+2)	(+2)	(+3)

CLASSWISE PERFORMANCE GRADES (% of marks)

DETAILS	I STD	II STD	III STD	IV STD	V STD
%	65	82	80	65	62
SCHOOL GR.	B	A	A	B	B
Diff. to Pre-Test	(+1)	(+1)	(+1)	(+1)	(0)
DIST. GR.	A	B	B	B	B
STATE GR.	A	B	B	B	B



GRADEWISE PERFORMANCE (NO. OF STUDENTS)

ENGLISH	1 Std	2 Std	3 Std	4 Std	5 Std	TAMIL	1 Std	2 Std	3 Std	4 Std	5 Std
GR. A	2	9	11	3	2	GR. A	2	6	12	23	13
GR. B	3	1	5	10	7	GR. B	3	5	5	6	4
GR. C	2	1	2	13	6	GR. C	2	0	1	2	0
GR. D	0	0	0	5	2	GR. D	0	0	0	0	0
GR. E	0	0	0	0	1	GR. E	0	0	0	0	1

DEAL POST TEST 2019-20 - SCHOOL REPORT CARD

PONDY
CEO

34020203103 GMS, SORIANKUPPAM

All Grades represent the following scorings in % *

GRADE A - >75	
GRADE B - 51 TO 75	* School Status Grade
GRADE C - 26 TO 50	represents the total
GRADE D - 10 TO 25	enrollment of the
GRADE E - <10	school (Not %)

Note: The Values given in the brackets denote the difference between the Pre and Post Test Scores.
(For Example: If the Pre-Test Grade is 'C' and the Post-Test Grade is 'A', then the progress is +2)

SCHOOL GRADE - BB

Status Gr. B (0) Performance Gr. B (0)

OVERALL PERFORMANCE GRADES

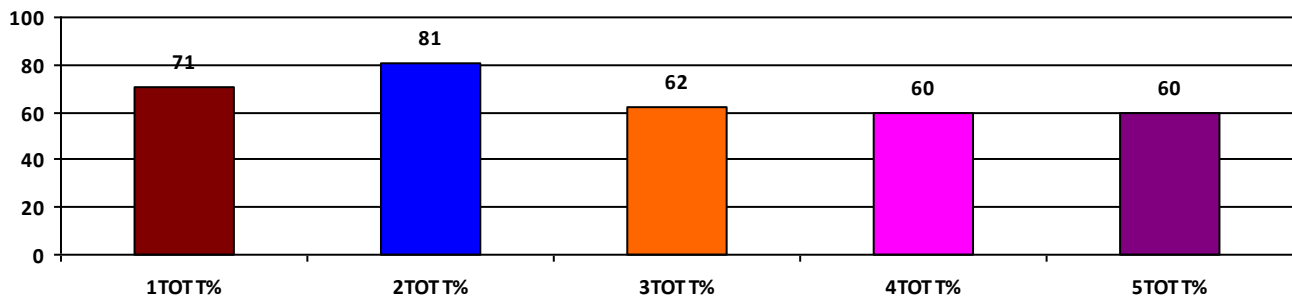
	Boys	Girls	Total
SCHOOL GR.	B	B	B
Diff. to Pre-Test	(0)	(0)	(0)
DIST. GR.	B	B	B
STATE GR.	B	B	B

CLASSWISE APPEARED

DETAILS	I STD	II STD	III STD	IV STD	V STD
BOYS	7	3	8	4	4
GIRLS	6	6	2	9	14
TOTAL	13	9	10	13	18
Diff. to Pre-Test	(0)	(0)	(0)	(-1)	(0)

CLASSWISE PERFORMANCE GRADES (% of marks)

DETAILS	I STD	II STD	III STD	IV STD	V STD
%	71	81	62	60	60
SCHOOL GR.	B	A	B	B	B
Diff. to Pre-Test	(0)	(0)	(0)	(0)	(+1)
DIST. GR.	A	B	B	B	B
STATE GR.	A	B	B	B	B



GRADEWISE PERFORMANCE (NO. OF STUDENTS)

ENGLISH	1 Std	2 Std	3 Std	4 Std	5 Std	TAMIL	1 Std	2 Std	3 Std	4 Std	5 Std
GR. A	8	8	2	1	6	GR. A	8	7	4	3	6
GR. B	2	0	5	6	5	GR. B	1	1	2	8	8
GR. C	2	1	2	4	5	GR. C	4	0	3	2	3
GR. D	1	0	1	2	2	GR. D	0	1	1	0	0
GR. E	0	0	0	0	0	GR. E	0	0	0	0	1

DEAL POST TEST 2019-20 - SCHOOL REPORT CARD

PONDY
CEO

34020203501 GMS, MANAPET

All Grades represent the following scorings in % *

GRADE A - >75	
GRADE B - 51 TO 75	* School Status Grade
GRADE C - 26 TO 50	represents the total
GRADE D - 10 TO 25	enrollment of the
GRADE E - <10	school (Not %)

Note: The Values given in the brackets denote the difference between the Pre and Post Test Scores.
(For Example: If the Pre-Test Grade is 'C' and the Post-Test Grade is 'A', then the progress is +2)

SCHOOL GRADE - BB

Status Gr. B (0) Performance Gr. B (0)

OVERALL PERFORMANCE GRADES

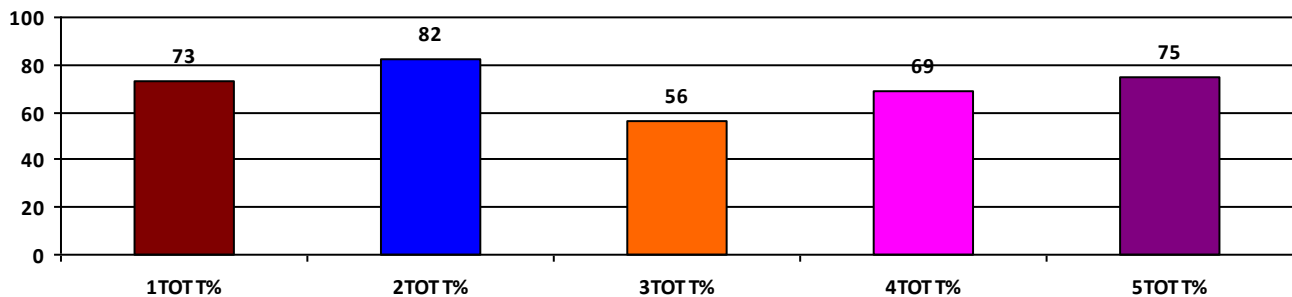
	Boys	Girls	Total
SCHOOL GR.	B	A	B
Diff. to Pre-Test	(+1)	(+1)	(0)
DIST. GR.	B	B	B
STATE GR.	B	B	B

CLASSWISE APPEARED

DETAILS	I STD	II STD	III STD	IV STD	V STD
BOYS	5	7	7	9	9
GIRLS	4	7	4	2	10
TOTAL	9	14	11	11	19
Diff. to Pre-Test	(-3)	(0)	(0)	(0)	(0)

CLASSWISE PERFORMANCE GRADES (% of marks)

DETAILS	I STD	II STD	III STD	IV STD	V STD
%	73	82	56	69	75
SCHOOL GR.	B	A	B	B	B
Diff. to Pre-Test	(0)	(+1)	(+1)	(+1)	(0)
DIST. GR.	A	B	B	B	B
STATE GR.	A	B	B	B	B



GRADEWISE PERFORMANCE (NO. OF STUDENTS)

ENGLISH	1 Std	2 Std	3 Std	4 Std	5 Std	TAMIL	1 Std	2 Std	3 Std	4 Std	5 Std
GR. A	6	7	4	3	11	GR. A	2	9	5	5	11
GR. B	2	7	2	6	5	GR. B	6	4	1	6	7
GR. C	1	0	2	2	3	GR. C	1	1	4	0	1
GR. D	0	0	2	0	0	GR. D	0	0	0	0	0
GR. E	0	0	1	0	0	GR. E	0	0	1	0	0

DEAL POST TEST 2019-20 - SCHOOL REPORT CARD

PONDY
CEO

34020204901 GMS, PANAYADIKUPPAM

All Grades represent the following scorings in % *

GRADE A - >75	
GRADE B - 51 TO 75	* School Status Grade
GRADE C - 26 TO 50	represents the total
GRADE D - 10 TO 25	enrollment of the
GRADE E - <10	school (Not %)

Note: The Values given in the brackets denote the difference between the Pre and Post Test Scores.
(For Example: If the Pre-Test Grade is 'C' and the Post-Test Grade is 'A', then the progress is +2)

SCHOOL GRADE - AB

Status Gr. A (0)	Performance Gr. B (0)
------------------	-----------------------

OVERALL PERFORMANCE GRADES

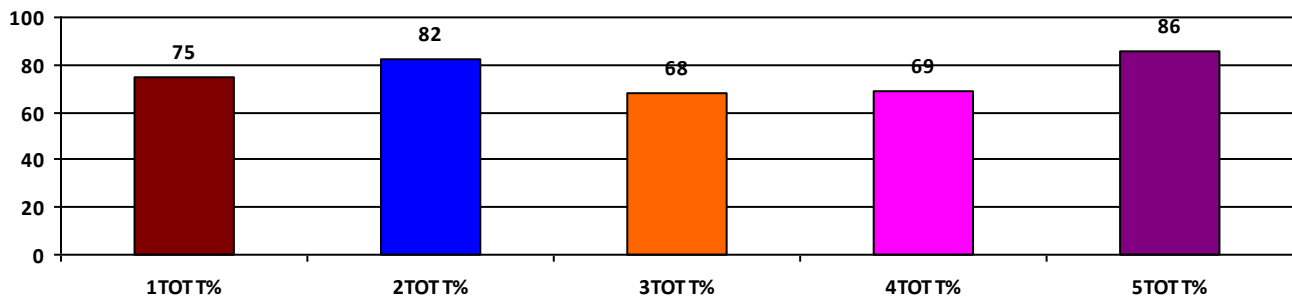
	Boys	Girls	Total
SCHOOL GR.	B	A	B
Diff. to Pre-Test	(0)	(0)	(0)
DIST. GR.	B	B	B
STATE GR.	B	B	B

CLASSWISE APPEARED

DETAILS	I STD	II STD	III STD	IV STD	V STD
BOYS	11	13	10	7	5
GIRLS	8	7	8	7	5
TOTAL	19	20	18	14	10
Diff. to Pre-Test	(-1)	(0)	(0)	(0)	(0)

CLASSWISE PERFORMANCE GRADES (% of marks)

DETAILS	I STD	II STD	III STD	IV STD	V STD
%	75	82	68	69	86
SCHOOL GR.	B	A	B	B	A
Diff. to Pre-Test	(0)	(+1)	(0)	(0)	(+1)
DIST. GR.	A	B	B	B	B
STATE GR.	A	B	B	B	B



GRADEWISE PERFORMANCE (NO. OF STUDENTS)

ENGLISH	1 Std	2 Std	3 Std	4 Std	5 Std	TAMIL	1 Std	2 Std	3 Std	4 Std	5 Std
GR. A	14	17	7	3	8	GR. A	10	16	10	9	9
GR. B	3	2	4	9	2	GR. B	7	3	6	3	1
GR. C	1	1	6	1	0	GR. C	1	1	2	1	0
GR. D	1	0	1	1	0	GR. D	1	0	0	1	0
GR. E	0	0	0	0	0	GR. E	0	0	0	0	0

DEAL POST TEST 2019-20 - SCHOOL REPORT CARD

PONDY
CEO

34020205001 GMS, PANDASOZHANALLUR

All Grades represent the following scorings in % *

GRADE A - >75	
GRADE B - 51 TO 75	* School Status Grade
GRADE C - 26 TO 50	represents the total
GRADE D - 10 TO 25	enrollment of the
GRADE E - <10	school (Not %)

Note: The Values given in the brackets denote the difference between the Pre and Post Test Scores.
(For Example: If the Pre-Test Grade is 'C' and the Post-Test Grade is 'A', then the progress is +2)

SCHOOL GRADE - DA

Status Gr. D (0) Performance Gr. A(+2)

OVERALL PERFORMANCE GRADES

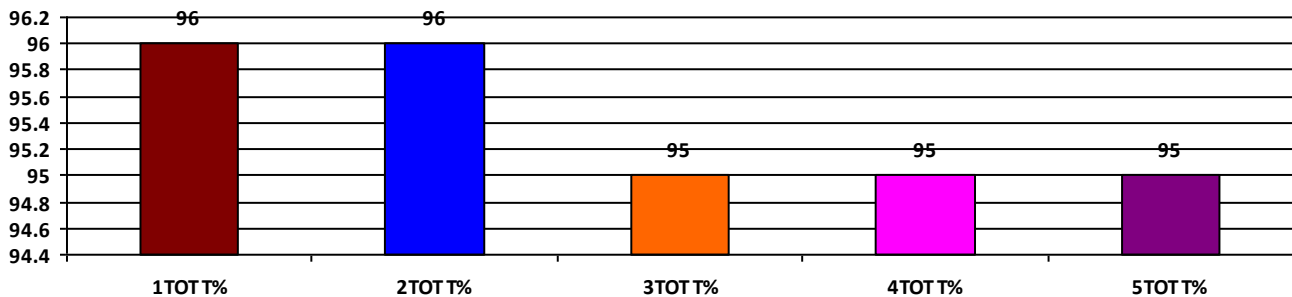
	Boys	Girls	Total
SCHOOL GR.	A	A	A
Diff. to Pre-Test	(+2)	(+2)	(+2)
DIST. GR.	B	B	B
STATE GR.	B	B	B

CLASSWISE APPEARED

DETAILS	I STD	II STD	III STD	IV STD	V STD
BOYS	2	1	4	2	4
GIRLS	0	2	4	4	0
TOTAL	2	3	8	6	4
Diff. to Pre-Test	(0)	(+1)	(+1)	(0)	(0)

CLASSWISE PERFORMANCE GRADES (% of marks)

DETAILS	I STD	II STD	III STD	IV STD	V STD
%	96	96	95	95	95
SCHOOL GR.	A	A	A	A	A
Diff. to Pre-Test	(+2)	(+2)	(+2)	(+1)	(+2)
DIST. GR.	A	B	B	B	B
STATE GR.	A	B	B	B	B



GRADEWISE PERFORMANCE (NO. OF STUDENTS)

ENGLISH	1 Std	2 Std	3 Std	4 Std	5 Std	TAMIL	1 Std	2 Std	3 Std	4 Std	5 Std
GR. A	2	3	8	6	4	GR. A	2	3	8	6	4
GR. B	0	0	0	0	0	GR. B	0	0	0	0	0
GR. C	0	0	0	0	0	GR. C	0	0	0	0	0
GR. D	0	0	0	0	0	GR. D	0	0	0	0	0
GR. E	0	0	0	0	0	GR. E	0	0	0	0	0

DEAL POST TEST 2019-20 - SCHOOL REPORT CARD

PONDY
CEO

34020205003 GHS, KALMANDAPAM

All Grades represent the following scorings in % *

GRADE A - >75	
GRADE B - 51 TO 75	* School Status Grade
GRADE C - 26 TO 50	represents the total
GRADE D - 10 TO 25	enrollment of the
GRADE E - <10	school (Not %)

Note: The Values given in the brackets denote the difference between the Pre and Post Test Scores.
(For Example: If the Pre-Test Grade is 'C' and the Post-Test Grade is 'A', then the progress is +2)

SCHOOL GRADE - AB

Status Gr. A (0)	Performance Gr. B (0)
------------------	-----------------------

OVERALL PERFORMANCE GRADES

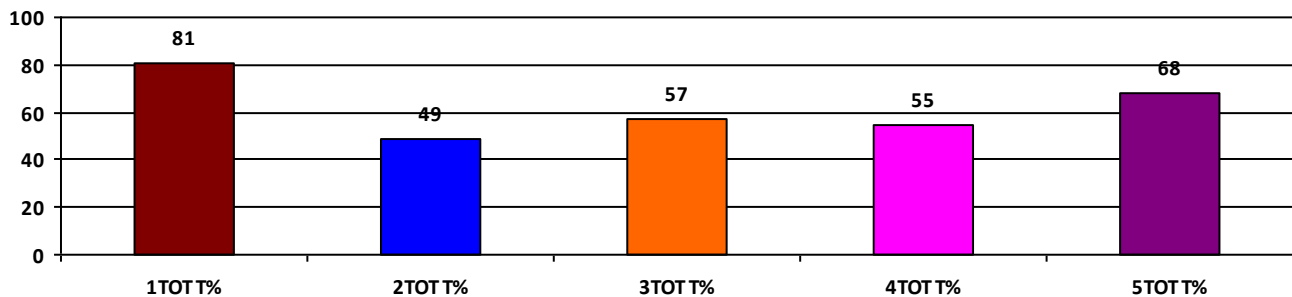
	Boys	Girls	Total
SCHOOL GR.	B	B	B
Diff. to Pre-Test	(0)	(0)	(0)
DIST. GR.	B	B	B
STATE GR.	B	B	B

CLASSWISE APPEARED

DETAILS	I STD	II STD	III STD	IV STD	V STD
BOYS	6	8	6	12	8
GIRLS	8	12	7	7	8
TOTAL	14	20	13	19	16
Diff. to Pre-Test	(-1)	(-1)	(0)	(+1)	(+1)

CLASSWISE PERFORMANCE GRADES (% of marks)

DETAILS	I STD	II STD	III STD	IV STD	V STD
%	81	49	57	55	68
SCHOOL GR.	A	C	B	B	B
Diff. to Pre-Test	(+1)	(0)	(0)	(+1)	(0)
DIST. GR.	A	B	B	B	B
STATE GR.	A	B	B	B	B



GRADEWISE PERFORMANCE (NO. OF STUDENTS)

ENGLISH	1 Std	2 Std	3 Std	4 Std	5 Std	TAMIL	1 Std	2 Std	3 Std	4 Std	5 Std
GR. A	10	0	1	3	6	GR. A	10	4	7	7	8
GR. B	2	8	5	6	3	GR. B	3	6	4	6	6
GR. C	1	9	5	7	6	GR. C	1	8	0	4	0
GR. D	1	2	1	3	1	GR. D	0	2	1	2	2
GR. E	0	1	1	0	0	GR. E	0	0	1	0	0

DEAL POST TEST 2019-20 - SCHOOL REPORT CARD

PONDY
CEO

34020205402 GMS, POORANANKUPPAM

All Grades represent the following scorings in % *

GRADE A - >75	* School Status Grade represents the total enrollment of the school (Not %)
GRADE B - 51 TO 75	
GRADE C - 26 TO 50	
GRADE D - 10 TO 25	
GRADE E - <10	

Note: The Values given in the brackets denote the difference between the Pre and Post Test Scores.
(For Example: If the Pre-Test Grade is 'C' and the Post-Test Grade is 'A', then the progress is +2)

SCHOOL GRADE - CB

Status Gr. C (0) Performance Gr. B (0)

OVERALL PERFORMANCE GRADES

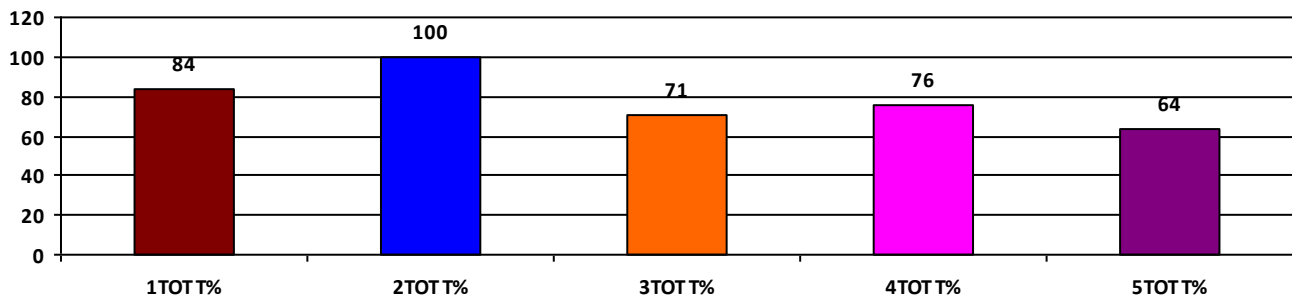
	Boys	Girls	Total
SCHOOL GR.	C	A	B
Diff. to Pre-Test	(0)	(+1)	(0)
DIST. GR.	B	B	B
STATE GR.	B	B	B

CLASSWISE APPEARED

DETAILS	I STD	II STD	III STD	IV STD	V STD
BOYS	2	0	2	2	2
GIRLS	4	1	7	3	10
TOTAL	6	1	9	5	12
Diff. to Pre-Test	(-1)	(0)	(0)	(0)	(0)

CLASSWISE PERFORMANCE GRADES (% of marks)

DETAILS	I STD	II STD	III STD	IV STD	V STD
%	84	100	71	76	64
SCHOOL GR.	A	A	B	A	B
Diff. to Pre-Test	(+1)	(0)	(0)	(+1)	(0)
DIST. GR.	A	B	B	B	B
STATE GR.	A	B	B	B	B



GRADEWISE PERFORMANCE (NO. OF STUDENTS)

ENGLISH	1 Std	2 Std	3 Std	4 Std	5 Std	TAMIL	1 Std	2 Std	3 Std	4 Std	5 Std
GR. A	4	1	6	2	6	GR. A	5	1	5	5	4
GR. B	2	0	1	1	4	GR. B	1	0	1	0	3
GR. C	0	0	1	2	1	GR. C	0	0	3	0	3
GR. D	0	0	1	0	0	GR. D	0	0	0	0	1
GR. E	0	0	0	0	1	GR. E	0	0	0	0	1

DEAL POST TEST 2019-20 - SCHOOL REPORT CARD

PONDY
CEO

34020205403 GMS, ANDIARPALAYAM (A)

All Grades represent the following scorings in % *

GRADE A - >75	
GRADE B - 51 TO 75	* School Status Grade
GRADE C - 26 TO 50	represents the total
GRADE D - 10 TO 25	enrollment of the
GRADE E - <10	school (Not %)

Note: The Values given in the brackets denote the difference between the Pre and Post Test Scores.
(For Example: If the Pre-Test Grade is 'C' and the Post-Test Grade is 'A', then the progress is +2)

SCHOOL GRADE - BB

Status Gr. B (0) Performance Gr. B (0)

OVERALL PERFORMANCE GRADES

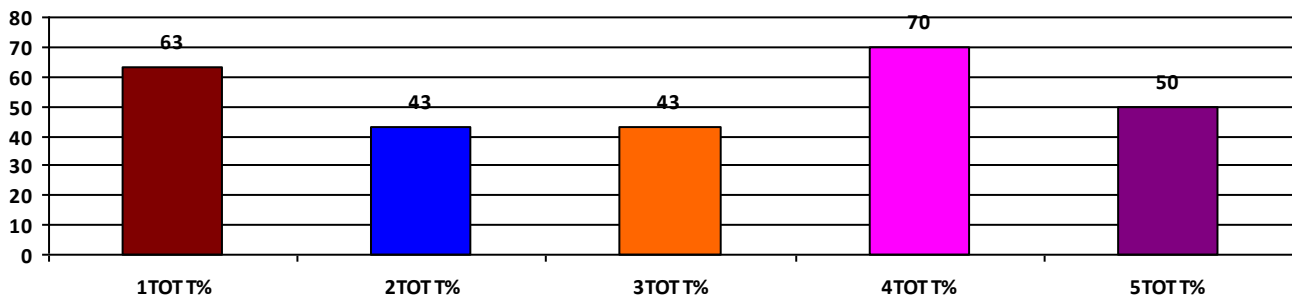
	Boys	Girls	Total
SCHOOL GR.	C	B	B
Diff. to Pre-Test	(0)	(0)	(0)
DIST. GR.	B	B	B
STATE GR.	B	B	B

CLASSWISE APPEARED

DETAILS	I STD	II STD	III STD	IV STD	V STD
BOYS	7	5	6	6	8
GIRLS	1	6	7	8	5
TOTAL	8	11	13	14	13
Diff. to Pre-Test	(+1)	(+2)	(+2)	(+2)	(0)

CLASSWISE PERFORMANCE GRADES (% of marks)

DETAILS	I STD	II STD	III STD	IV STD	V STD
%	63	43	43	70	50
SCHOOL GR.	B	C	C	B	C
Diff. to Pre-Test	(0)	(0)	(+1)	(0)	(-1)
DIST. GR.	A	B	B	B	B
STATE GR.	A	B	B	B	B



GRADEWISE PERFORMANCE (NO. OF STUDENTS)

ENGLISH	1 Std	2 Std	3 Std	4 Std	5 Std	TAMIL	1 Std	2 Std	3 Std	4 Std	5 Std
GR. A	0	0	0	4	0	GR. A	5	4	3	10	6
GR. B	3	0	3	9	4	GR. B	3	3	4	3	4
GR. C	4	7	3	0	5	GR. C	0	2	5	0	1
GR. D	1	2	4	0	3	GR. D	0	1	0	0	1
GR. E	0	2	3	1	1	GR. E	0	1	1	1	1

DEAL POST TEST 2019-20 - SCHOOL REPORT CARD

PONDY
CEO

34020205805 **GMS, ADINGAPET**

All Grades represent the following scorings in % *

GRADE A - >75	
GRADE B - 51 TO 75	* School Status Grade
GRADE C - 26 TO 50	represents the total
GRADE D - 10 TO 25	enrollment of the
GRADE E - <10	school (Not %)

Note: The Values given in the brackets denote the difference between the Pre and Post Test Scores.
(For Example: If the Pre-Test Grade is 'C' and the Post-Test Grade is 'A', then the progress is +2)

SCHOOL GRADE - DC

Status Gr. D (0)	Performance Gr. C (-1)
------------------	------------------------

OVERALL PERFORMANCE GRADES

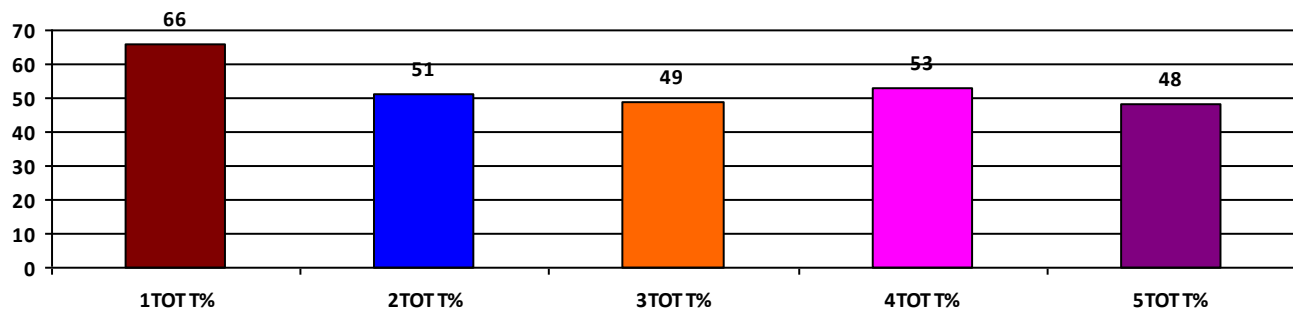
	Boys	Girls	Total
SCHOOL GR.	C	C	C
Diff. to Pre-Test	(-1)	(-1)	(-1)
DIST. GR.	B	B	B
STATE GR.	B	B	B

CLASSWISE APPEARED

DETAILS	I STD	II STD	III STD	IV STD	V STD
BOYS	1	3	2	5	6
GIRLS	0	1	5	1	1
TOTAL	1	4	7	6	7
Diff. to Pre-Test	(0)	(0)	(+1)	(0)	(0)

CLASSWISE PERFORMANCE GRADES (% of marks)

DETAILS	I STD	II STD	III STD	IV STD	V STD
%	66	51	49	53	48
SCHOOL GR.	B	B	C	B	C
Diff. to Pre-Test	(0)	(0)	(-1)	(+1)	(-1)
DIST. GR.	A	B	B	B	B
STATE GR.	A	B	B	B	B



GRADEWISE PERFORMANCE (NO. OF STUDENTS)

ENGLISH	1 Std	2 Std	3 Std	4 Std	5 Std	TAMIL	1 Std	2 Std	3 Std	4 Std	5 Std
GR. A	0	0	0	0	2	GR. A	1	3	3	1	2
GR. B	1	0	2	3	2	GR. B	0	0	1	4	3
GR. C	0	3	2	3	1	GR. C	0	1	2	1	0
GR. D	0	1	2	0	0	GR. D	0	0	0	0	1
GR. E	0	0	1	0	2	GR. E	0	0	1	0	1

DEAL POST TEST 2019-20 - SCHOOL REPORT CARD

PONDY
CEO

34020206606 GMS, NALLAVADU

All Grades represent the following scorings in % *

GRADE A - >75	* School Status Grade represents the total enrollment of the school (Not %)
GRADE B - 51 TO 75	
GRADE C - 26 TO 50	
GRADE D - 10 TO 25	
GRADE E - <10	

Note: The Values given in the brackets denote the difference between the Pre and Post Test Scores.
(For Example: If the Pre-Test Grade is 'C' and the Post-Test Grade is 'A', then the progress is +2)

SCHOOL GRADE - AB

Status Gr. A (0) Performance Gr. B(+1)

OVERALL PERFORMANCE GRADES

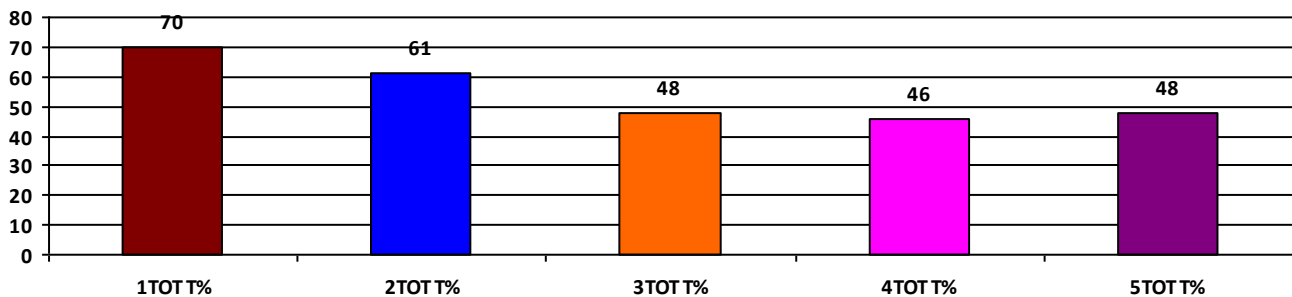
	Boys	Girls	Total
SCHOOL GR.	C	B	B
Diff. to Pre-Test	(0)	(+1)	(+1)
DIST. GR.	B	B	B
STATE GR.	B	B	B

CLASSWISE APPEARED

DETAILS	I STD	II STD	III STD	IV STD	V STD
BOYS	6	15	4	14	8
GIRLS	10	8	7	14	6
TOTAL	16	23	11	28	14
Diff. to Pre-Test	(0)	(+2)	(+2)	(+5)	(+1)

CLASSWISE PERFORMANCE GRADES (% of marks)

DETAILS	I STD	II STD	III STD	IV STD	V STD
%	70	61	48	46	48
SCHOOL GR.	B	B	C	C	C
Diff. to Pre-Test	(0)	(+1)	(0)	(0)	(0)
DIST. GR.	A	B	B	B	B
STATE GR.	A	B	B	B	B



GRADEWISE PERFORMANCE (NO. OF STUDENTS)

ENGLISH	1 Std	2 Std	3 Std	4 Std	5 Std	TAMIL	1 Std	2 Std	3 Std	4 Std	5 Std
GR. A	10	12	0	1	3	GR. A	4	3	6	6	4
GR. B	3	4	0	8	2	GR. B	7	8	2	9	2
GR. C	3	5	7	10	5	GR. C	4	10	3	5	5
GR. D	0	2	4	7	1	GR. D	1	2	0	7	0
GR. E	0	0	0	2	3	GR. E	0	0	0	1	3

DEAL POST TEST 2019-20 - SCHOOL REPORT CARD

PONDY
CEO

34020206701 GMS, TN PALAYAM

All Grades represent the following scorings in % *

GRADE A - >75	* School Status Grade represents the total enrollment of the school (Not %)
GRADE B - 51 TO 75	
GRADE C - 26 TO 50	
GRADE D - 10 TO 25	
GRADE E - <10	

Note: The Values given in the brackets denote the difference between the Pre and Post Test Scores.
(For Example: If the Pre-Test Grade is 'C' and the Post-Test Grade is 'A', then the progress is +2)

SCHOOL GRADE - BC

Status Gr. B (0) Performance Gr. C (0)

OVERALL PERFORMANCE GRADES

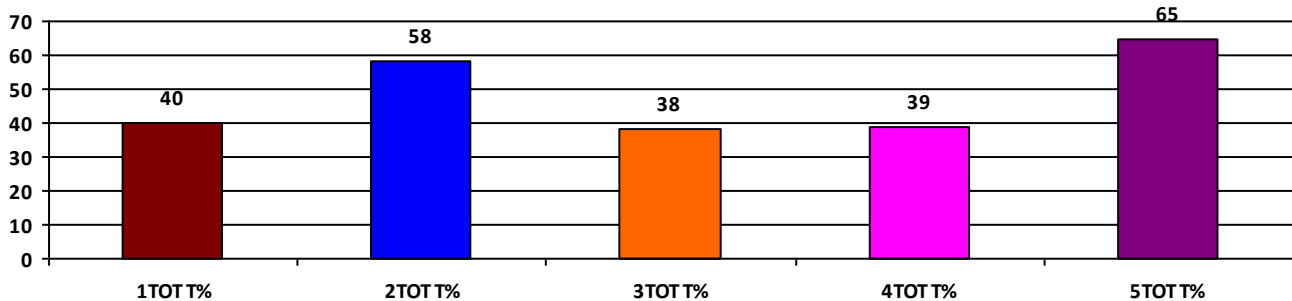
	Boys	Girls	Total
SCHOOL GR.	C	B	C
Diff. to Pre-Test	(0)	(+1)	(0)
DIST. GR.	B	B	B
STATE GR.	B	B	B

CLASSWISE APPEARED

DETAILS	I STD	II STD	III STD	IV STD	V STD
BOYS	4	5	8	9	6
GIRLS	1	7	5	4	6
TOTAL	5	12	13	13	12
Diff. to Pre-Test	(+1)	(-1)	(-1)	(+1)	(0)

CLASSWISE PERFORMANCE GRADES (% of marks)

DETAILS	I STD	II STD	III STD	IV STD	V STD
%	40	58	38	39	65
SCHOOL GR.	C	B	C	C	B
Diff. to Pre-Test	(-1)	(+1)	(0)	(0)	(+1)
DIST. GR.	A	B	B	B	B
STATE GR.	A	B	B	B	B



GRADEWISE PERFORMANCE (NO. OF STUDENTS)

ENGLISH	1 Std	2 Std	3 Std	4 Std	5 Std	TAMIL	1 Std	2 Std	3 Std	4 Std	5 Std
GR. A	0	0	2	0	4	GR. A	0	4	3	1	8
GR. B	1	9	1	4	4	GR. B	2	4	1	3	1
GR. C	2	3	3	7	3	GR. C	3	2	7	4	0
GR. D	2	0	5	2	1	GR. D	0	2	0	4	3
GR. E	0	0	2	0	0	GR. E	0	0	2	1	0

DEAL POST TEST 2019-20 - SCHOOL REPORT CARD

PONDY
CEO

34020207403 GHS, KEEZHPARIKALPET

All Grades represent the following scorings in % *

GRADE A - >75	
GRADE B - 51 TO 75	* School Status Grade
GRADE C - 26 TO 50	represents the total
GRADE D - 10 TO 25	enrollment of the
GRADE E - <10	school (Not %)

Note: The Values given in the brackets denote the difference between the Pre and Post Test Scores.
(For Example: If the Pre-Test Grade is 'C' and the Post-Test Grade is 'A', then the progress is +2)

SCHOOL GRADE - AB

Status Gr. A (0)	Performance Gr. B (0)
------------------	-----------------------

OVERALL PERFORMANCE GRADES

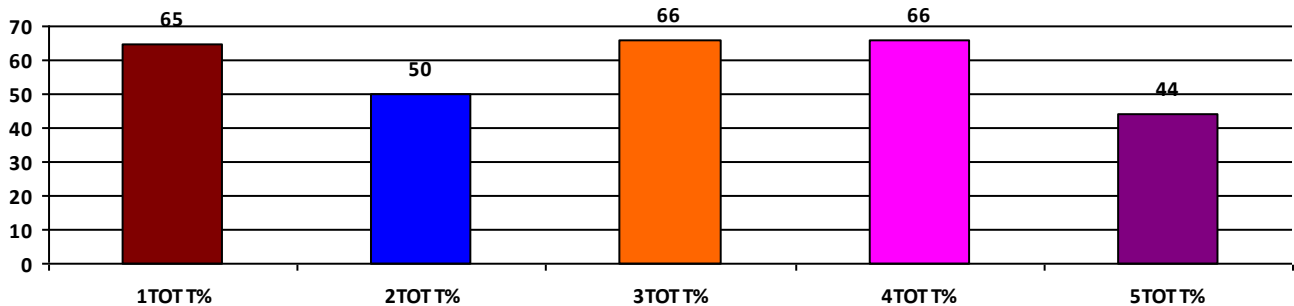
	Boys	Girls	Total
SCHOOL GR.	B	B	B
Diff. to Pre-Test	(0)	(0)	(0)
DIST. GR.	B	B	B
STATE GR.	B	B	B

CLASSWISE APPEARED

DETAILS	I STD	II STD	III STD	IV STD	V STD
BOYS	6	3	13	9	10
GIRLS	7	5	7	6	9
TOTAL	13	8	20	15	19
Diff. to Pre-Test	(0)	(+1)	(+3)	(0)	(+1)

CLASSWISE PERFORMANCE GRADES (% of marks)

DETAILS	I STD	II STD	III STD	IV STD	V STD
%	65	50	66	66	44
SCHOOL GR.	B	C	B	B	C
Diff. to Pre-Test	(-1)	(-2)	(0)	(0)	(0)
DIST. GR.	A	B	B	B	B
STATE GR.	A	B	B	B	B



GRADEWISE PERFORMANCE (NO. OF STUDENTS)

ENGLISH	1 Std	2 Std	3 Std	4 Std	5 Std	TAMIL	1 Std	2 Std	3 Std	4 Std	5 Std
GR. A	3	1	13	6	0	GR. A	0	0	7	9	2
GR. B	9	5	5	7	7	GR. B	11	3	1	2	7
GR. C	1	1	1	1	9	GR. C	2	4	5	1	3
GR. D	0	0	1	1	3	GR. D	0	0	6	3	4
GR. E	0	1	0	0	0	GR. E	0	1	1	0	3

DEAL POST TEST 2019-20 - SCHOOL REPORT CARD

PONDY
CEO

34020301701 **GMS, KEEZHUR**

All Grades represent the following scorings in % *

GRADE A - >75	
GRADE B - 51 TO 75	* School Status Grade
GRADE C - 26 TO 50	represents the total
GRADE D - 10 TO 25	enrollment of the
GRADE E - <10	school (Not %)

Note: The Values given in the brackets denote the difference between the Pre and Post Test Scores.
(For Example: If the Pre-Test Grade is 'C' and the Post-Test Grade is 'A', then the progress is +2)

SCHOOL GRADE - BB

Status Gr. B (0) Performance Gr. B (0)

OVERALL PERFORMANCE GRADES

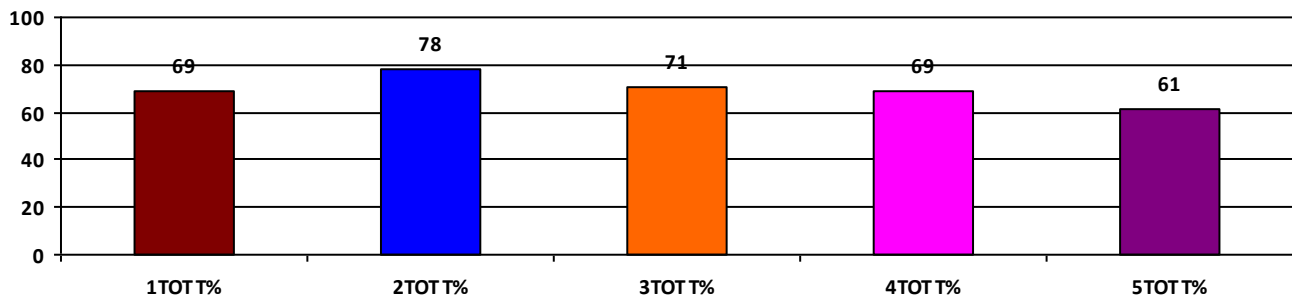
	Boys	Girls	Total
SCHOOL GR.	B	B	B
Diff. to Pre-Test	(0)	(0)	(0)
DIST. GR.	B	B	B
STATE GR.	B	B	B

CLASSWISE APPEARED

DETAILS	I STD	II STD	III STD	IV STD	V STD
BOYS	6	5	2	8	7
GIRLS	2	6	9	4	7
TOTAL	8	11	11	12	14
Diff. to Pre-Test	(-1)	(+2)	(0)	(0)	(0)

CLASSWISE PERFORMANCE GRADES (% of marks)

DETAILS	I STD	II STD	III STD	IV STD	V STD
%	69	78	71	69	61
SCHOOL GR.	B	A	B	B	B
Diff. to Pre-Test	(-1)	(+1)	(0)	(0)	(0)
DIST. GR.	A	B	B	B	B
STATE GR.	A	B	B	B	B



GRADEWISE PERFORMANCE (NO. OF STUDENTS)

ENGLISH	1 Std	2 Std	3 Std	4 Std	5 Std	TAMIL	1 Std	2 Std	3 Std	4 Std	5 Std
GR. A	5	8	6	7	6	GR. A	4	6	6	7	3
GR. B	1	2	4	1	3	GR. B	3	2	4	3	6
GR. C	1	1	0	3	4	GR. C	1	3	0	2	4
GR. D	1	0	0	1	0	GR. D	0	0	0	0	0
GR. E	0	0	1	0	1	GR. E	0	0	1	0	1

DEAL POST TEST 2019-20 - SCHOOL REPORT CARD

PONDY
CEO

34020302601 GMS, MANALIPET

All Grades represent the following scorings in % *

GRADE A - >75	* School Status Grade represents the total enrollment of the school (Not %)
GRADE B - 51 TO 75	
GRADE C - 26 TO 50	
GRADE D - 10 TO 25	
GRADE E - <10	

Note: The Values given in the brackets denote the difference between the Pre and Post Test Scores.
(For Example: If the Pre-Test Grade is 'C' and the Post-Test Grade is 'A', then the progress is +2)

SCHOOL GRADE - AB

Status Gr. A (0)	Performance Gr. B (0)
------------------	-----------------------

OVERALL PERFORMANCE GRADES

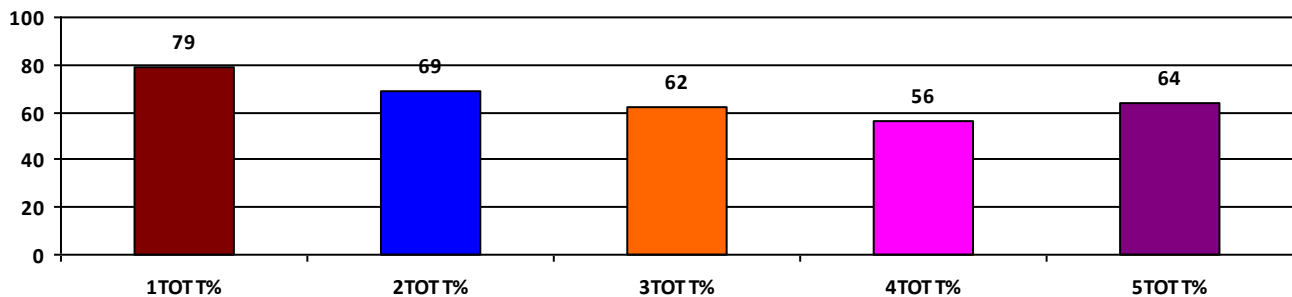
	Boys	Girls	Total
SCHOOL GR.	B	B	B
Diff. to Pre-Test	(0)	(0)	(0)
DIST. GR.	B	B	B
STATE GR.	B	B	B

CLASSWISE APPEARED

DETAILS	I STD	II STD	III STD	IV STD	V STD
BOYS	11	12	12	13	19
GIRLS	12	19	13	12	6
TOTAL	23	31	25	25	25
Diff. to Pre-Test	(+1)	(+5)	(+1)	(-1)	(+1)

CLASSWISE PERFORMANCE GRADES (% of marks)

DETAILS	I STD	II STD	III STD	IV STD	V STD
%	79	69	62	56	64
SCHOOL GR.	A	B	B	B	B
Diff. to Pre-Test	(+1)	(0)	(+1)	(0)	(0)
DIST. GR.	A	B	B	B	B
STATE GR.	A	B	B	B	B



GRADEWISE PERFORMANCE (NO. OF STUDENTS)

ENGLISH	1 Std	2 Std	3 Std	4 Std	5 Std	TAMIL	1 Std	2 Std	3 Std	4 Std	5 Std
GR. A	16	3	0	0	6	GR. A	18	15	9	14	16
GR. B	5	27	15	6	9	GR. B	4	15	15	8	6
GR. C	2	1	10	12	7	GR. C	1	1	1	0	1
GR. D	0	0	0	6	2	GR. D	0	0	0	2	1
GR. E	0	0	0	1	1	GR. E	0	0	0	1	1

DEAL POST TEST 2019-20 - SCHOOL REPORT CARD

PONDY
CEO

34020302902 GMS, MANNADIPET

All Grades represent the following scorings in % *

GRADE A - >75	
GRADE B - 51 TO 75	* School Status Grade
GRADE C - 26 TO 50	represents the total
GRADE D - 10 TO 25	enrollment of the
GRADE E - <10	school (Not %)

Note: The Values given in the brackets denote the difference between the Pre and Post Test Scores.
(For Example: If the Pre-Test Grade is 'C' and the Post-Test Grade is 'A', then the progress is +2)

SCHOOL GRADE - BB

Status Gr. B (-1) Performance Gr. B(+1)

OVERALL PERFORMANCE GRADES

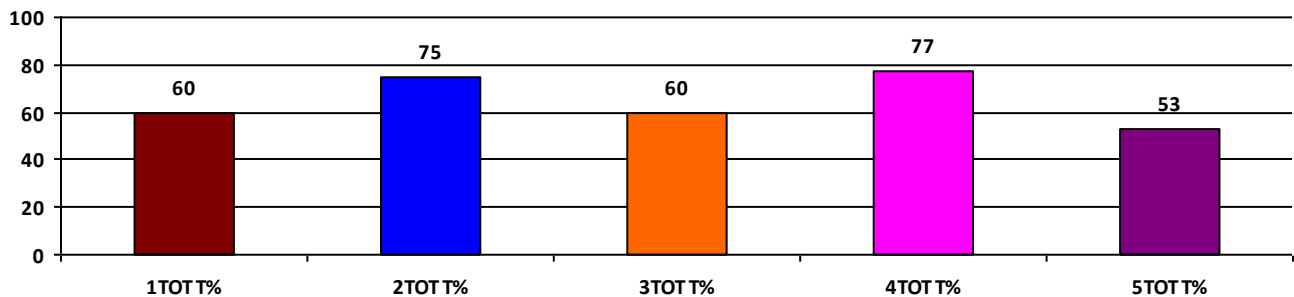
	Boys	Girls	Total
SCHOOL GR.	B	B	B
Diff. to Pre-Test	(+1)	(+1)	(+1)
DIST. GR.	B	B	B
STATE GR.	B	B	B

CLASSWISE APPEARED

DETAILS	I STD	II STD	III STD	IV STD	V STD
BOYS	6	3	5	5	9
GIRLS	6	6	18	11	6
TOTAL	12	9	23	16	15
Diff. to Pre-Test	(+2)	(0)	(+3)	(0)	(0)

CLASSWISE PERFORMANCE GRADES (% of marks)

DETAILS	I STD	II STD	III STD	IV STD	V STD
%	60	75	60	77	53
SCHOOL GR.	B	B	B	A	B
Diff. to Pre-Test	(0)	(+1)	(+1)	(+2)	(+1)
DIST. GR.	A	B	B	B	B
STATE GR.	A	B	B	B	B



GRADEWISE PERFORMANCE (NO. OF STUDENTS)

ENGLISH	1 Std	2 Std	3 Std	4 Std	5 Std	TAMIL	1 Std	2 Std	3 Std	4 Std	5 Std
GR. A	0	1	5	3	1	GR. A	5	7	6	12	0
GR. B	8	6	6	13	10	GR. B	4	2	12	4	11
GR. C	2	2	11	0	3	GR. C	3	0	5	0	3
GR. D	2	0	1	0	0	GR. D	0	0	0	0	0
GR. E	0	0	0	0	1	GR. E	0	0	0	0	1

DEAL POST TEST 2019-20 - SCHOOL REPORT CARD

PONDY
CEO

34020302910 GHS, THIRUKKANUR

All Grades represent the following scorings in % *

GRADE A - >75	* School Status Grade represents the total enrollment of the school (Not %)
GRADE B - 51 TO 75	
GRADE C - 26 TO 50	
GRADE D - 10 TO 25	
GRADE E - <10	

Note: The Values given in the brackets denote the difference between the Pre and Post Test Scores.
(For Example: If the Pre-Test Grade is 'C' and the Post-Test Grade is 'A', then the progress is +2)

SCHOOL GRADE - AB

Status Gr. A (0) Performance Gr. B(+1)

OVERALL PERFORMANCE GRADES

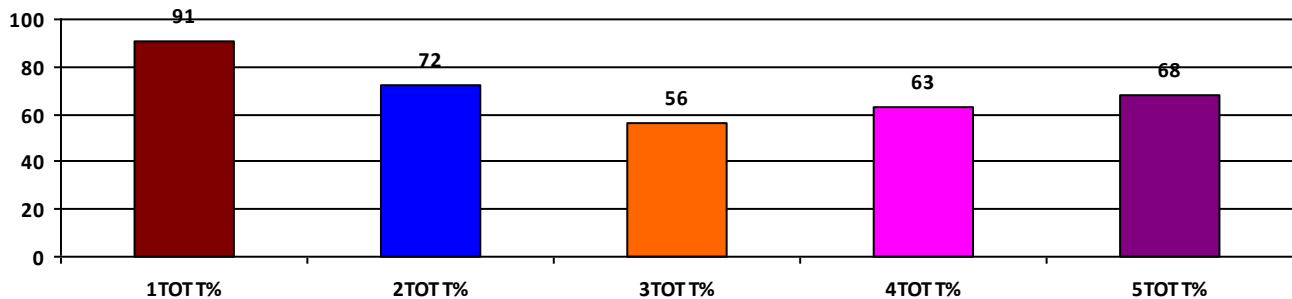
	Boys	Girls	Total
SCHOOL GR.	B	NA	B
Diff. to Pre-Test	(+1)	(+8)	(+1)
DIST. GR.	B	B	B
STATE GR.	B	B	B

CLASSWISE APPEARED

DETAILS	I STD	II STD	III STD	IV STD	V STD
BOYS	15	27	21	23	51
GIRLS	0	0	0	0	0
TOTAL	15	27	21	23	51
Diff. to Pre-Test	(-1)	(-1)	(+2)	(+4)	(+1)

CLASSWISE PERFORMANCE GRADES (% of marks)

DETAILS	I STD	II STD	III STD	IV STD	V STD
%	91	72	56	63	68
SCHOOL GR.	A	B	B	B	B
Diff. to Pre-Test	(0)	(0)	(+1)	(+1)	(0)
DIST. GR.	A	B	B	B	B
STATE GR.	A	B	B	B	B



GRADEWISE PERFORMANCE (NO. OF STUDENTS)

ENGLISH	1 Std	2 Std	3 Std	4 Std	5 Std	TAMIL	1 Std	2 Std	3 Std	4 Std	5 Std
GR. A	14	13	2	4	19	GR. A	14	15	8	14	26
GR. B	1	10	6	12	22	GR. B	1	5	5	4	14
GR. C	0	2	10	3	8	GR. C	0	6	7	2	8
GR. D	0	2	3	3	2	GR. D	0	0	1	2	3
GR. E	0	0	0	1	0	GR. E	0	1	0	1	0

DEAL POST TEST 2019-20 - SCHOOL REPORT CARD

PONDY
CEO

34020303303 TVK GHS, ARUMBARTHAPURAM

All Grades represent the following scorings in % *

GRADE A - >75	* School Status Grade represents the total enrollment of the school (Not %)
GRADE B - 51 TO 75	
GRADE C - 26 TO 50	
GRADE D - 10 TO 25	
GRADE E - <10	

Note: The Values given in the brackets denote the difference between the Pre and Post Test Scores.
(For Example: If the Pre-Test Grade is 'C' and the Post-Test Grade is 'A', then the progress is +2)

SCHOOL GRADE - BB

Status Gr. B (0) Performance Gr. B(+1)

OVERALL PERFORMANCE GRADES

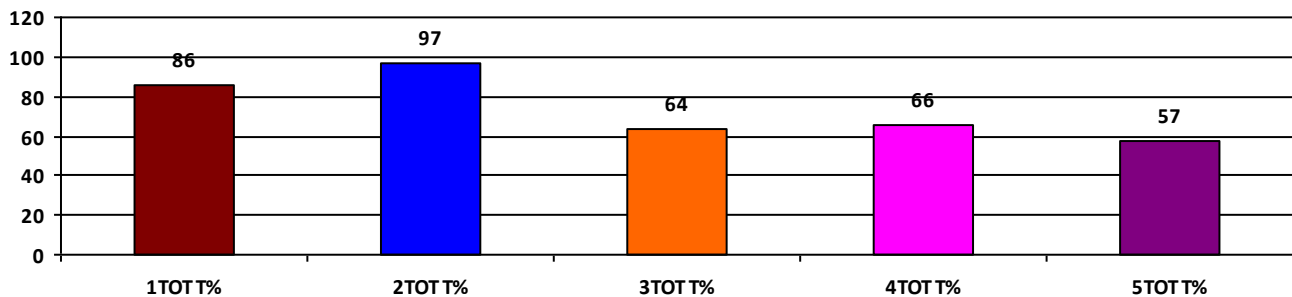
	Boys	Girls	Total
SCHOOL GR.	B	B	B
Diff. to Pre-Test	(+1)	(+1)	(+1)
DIST. GR.	B	B	B
STATE GR.	B	B	B

CLASSWISE APPEARED

DETAILS	I STD	II STD	III STD	IV STD	V STD
BOYS	4	5	7	7	11
GIRLS	7	3	4	3	10
TOTAL	11	8	11	10	21
Diff. to Pre-Test	(+2)	(+1)	(+1)	(+1)	(+3)

CLASSWISE PERFORMANCE GRADES (% of marks)

DETAILS	I STD	II STD	III STD	IV STD	V STD
%	86	97	64	66	57
SCHOOL GR.	A	A	B	B	B
Diff. to Pre-Test	(+1)	(+1)	(0)	(0)	(+1)
DIST. GR.	A	B	B	B	B
STATE GR.	A	B	B	B	B



GRADEWISE PERFORMANCE (NO. OF STUDENTS)

ENGLISH	1 Std	2 Std	3 Std	4 Std	5 Std	TAMIL	1 Std	2 Std	3 Std	4 Std	5 Std
GR. A	8	8	1	1	6	GR. A	8	8	4	6	7
GR. B	1	0	4	5	5	GR. B	3	0	7	3	6
GR. C	2	0	6	3	7	GR. C	0	0	0	1	4
GR. D	0	0	0	1	3	GR. D	0	0	0	0	2
GR. E	0	0	0	0	0	GR. E	0	0	0	0	2

DEAL POST TEST 2019-20 - SCHOOL REPORT CARD

PONDY
CEO

34020304001 GMS, SANNIYASIKUPPAM

All Grades represent the following scorings in % *

GRADE A - >75	
GRADE B - 51 TO 75	* School Status Grade
GRADE C - 26 TO 50	represents the total
GRADE D - 10 TO 25	enrollment of the
GRADE E - <10	school (Not %)

Note: The Values given in the brackets denote the difference between the Pre and Post Test Scores.
(For Example: If the Pre-Test Grade is 'C' and the Post-Test Grade is 'A', then the progress is +2)

SCHOOL GRADE - AB

Status Gr. A (0) Performance Gr. B(+1)

OVERALL PERFORMANCE GRADES

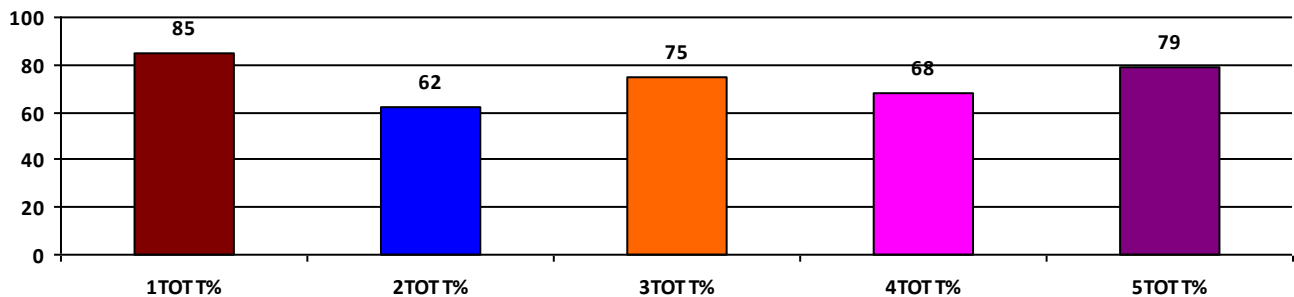
	Boys	Girls	Total
SCHOOL GR.	B	B	B
Diff. to Pre-Test	(+1)	(+1)	(+1)
DIST. GR.	B	B	B
STATE GR.	B	B	B

CLASSWISE APPEARED

DETAILS	I STD	II STD	III STD	IV STD	V STD
BOYS	10	9	18	12	12
GIRLS	7	13	11	17	20
TOTAL	17	22	29	29	32
Diff. to Pre-Test	(+1)	(+1)	(+2)	(+2)	(+1)

CLASSWISE PERFORMANCE GRADES (% of marks)

DETAILS	I STD	II STD	III STD	IV STD	V STD
%	85	62	75	68	79
SCHOOL GR.	A	B	B	B	A
Diff. to Pre-Test	(0)	(+1)	(+1)	(+1)	(+2)
DIST. GR.	A	B	B	B	B
STATE GR.	A	B	B	B	B



GRADEWISE PERFORMANCE (NO. OF STUDENTS)

ENGLISH	1 Std	2 Std	3 Std	4 Std	5 Std	TAMIL	1 Std	2 Std	3 Std	4 Std	5 Std
GR. A	11	5	14	7	26	GR. A	15	13	16	12	24
GR. B	6	12	13	16	3	GR. B	2	4	10	14	5
GR. C	0	1	2	6	0	GR. C	0	3	1	2	0
GR. D	0	1	0	0	0	GR. D	0	1	1	1	0
GR. E	0	3	0	0	3	GR. E	0	1	1	0	3

DEAL POST TEST 2019-20 - SCHOOL REPORT CARD

PONDY
CEO

34020304002 GHS, KOTHAPURINATHAM

All Grades represent the following scorings in % *

GRADE A - >75	* School Status Grade represents the total enrollment of the school (Not %)
GRADE B - 51 TO 75	
GRADE C - 26 TO 50	
GRADE D - 10 TO 25	
GRADE E - <10	

Note: The Values given in the brackets denote the difference between the Pre and Post Test Scores.
(For Example: If the Pre-Test Grade is 'C' and the Post-Test Grade is 'A', then the progress is +2)

SCHOOL GRADE - AB

Status Gr. A (0)	Performance Gr. B (0)
------------------	-----------------------

OVERALL PERFORMANCE GRADES

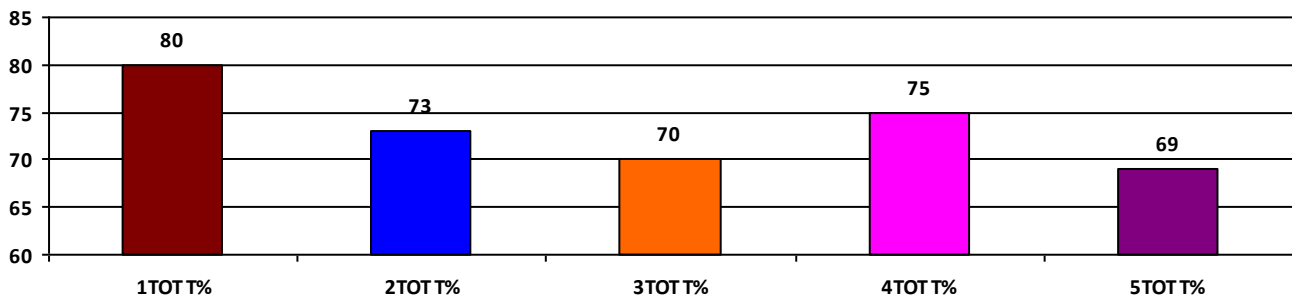
	Boys	Girls	Total
SCHOOL GR.	B	A	B
Diff. to Pre-Test	(+1)	(+1)	(0)
DIST. GR.	B	B	B
STATE GR.	B	B	B

CLASSWISE APPEARED

DETAILS	I STD	II STD	III STD	IV STD	V STD
BOYS	6	10	10	2	11
GIRLS	7	10	13	9	15
TOTAL	13	20	23	11	26
Diff. to Pre-Test	(0)	(0)	(+1)	(-1)	(0)

CLASSWISE PERFORMANCE GRADES (% of marks)

DETAILS	I STD	II STD	III STD	IV STD	V STD
%	80	73	70	75	69
SCHOOL GR.	A	B	B	B	B
Diff. to Pre-Test	(+1)	(+1)	(0)	(0)	(+1)
DIST. GR.	A	B	B	B	B
STATE GR.	A	B	B	B	B



GRADEWISE PERFORMANCE (NO. OF STUDENTS)

ENGLISH	1 Std	2 Std	3 Std	4 Std	5 Std	TAMIL	1 Std	2 Std	3 Std	4 Std	5 Std
GR. A	9	13	9	3	16	GR. A	9	13	13	8	13
GR. B	3	5	7	8	5	GR. B	4	1	9	3	6
GR. C	1	1	6	0	4	GR. C	0	5	0	0	3
GR. D	0	1	1	0	1	GR. D	0	1	1	0	4
GR. E	0	0	0	0	0	GR. E	0	0	0	0	0

DEAL POST TEST 2019-20 - SCHOOL REPORT CARD

PONDY
CEO

34020304101 GHS, SANTHAI PUDUKUPPAM

All Grades represent the following scorings in % *

GRADE A - >75	
GRADE B - 51 TO 75	* School Status Grade
GRADE C - 26 TO 50	represents the total
GRADE D - 10 TO 25	enrollment of the
GRADE E - <10	school (Not %)

Note: The Values given in the brackets denote the difference between the Pre and Post Test Scores.
(For Example: If the Pre-Test Grade is 'C' and the Post-Test Grade is 'A', then the progress is +2)

SCHOOL GRADE - BA

Status Gr. B (0) Performance Gr. A(+1)

OVERALL PERFORMANCE GRADES

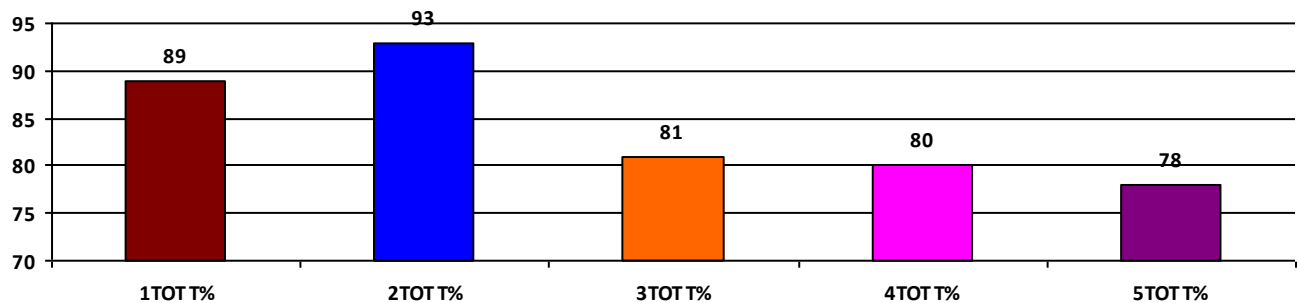
	Boys	Girls	Total
SCHOOL GR.	A	A	A
Diff. to Pre-Test	(+2)	(+1)	(+1)
DIST. GR.	B	B	B
STATE GR.	B	B	B

CLASSWISE APPEARED

DETAILS	I STD	II STD	III STD	IV STD	V STD
BOYS	4	7	5	8	5
GIRLS	4	4	5	4	8
TOTAL	8	11	10	12	13
Diff. to Pre-Test	(0)	(0)	(0)	(0)	(0)

CLASSWISE PERFORMANCE GRADES (% of marks)

DETAILS	I STD	II STD	III STD	IV STD	V STD
%	89	93	81	80	78
SCHOOL GR.	A	A	A	A	A
Diff. to Pre-Test	(+1)	(+1)	(+2)	(+1)	(+1)
DIST. GR.	A	B	B	B	B
STATE GR.	A	B	B	B	B



GRADEWISE PERFORMANCE (NO. OF STUDENTS)

ENGLISH	1 Std	2 Std	3 Std	4 Std	5 Std	TAMIL	1 Std	2 Std	3 Std	4 Std	5 Std
GR. A	7	9	9	2	10	GR. A	7	11	9	11	9
GR. B	1	2	0	10	2	GR. B	1	0	0	1	3
GR. C	0	0	0	0	1	GR. C	0	0	0	0	1
GR. D	0	0	0	0	0	GR. D	0	0	0	0	0
GR. E	0	0	1	0	0	GR. E	0	0	1	0	0

DEAL POST TEST 2019-20 - SCHOOL REPORT CARD

PONDY
CEO

34020304301 GHS, SELLIPET

All Grades represent the following scorings in % *

GRADE A - >75	
GRADE B - 51 TO 75	* School Status Grade
GRADE C - 26 TO 50	represents the total
GRADE D - 10 TO 25	enrollment of the
GRADE E - <10	school (Not %)

Note: The Values given in the brackets denote the difference between the Pre and Post Test Scores.
(For Example: If the Pre-Test Grade is 'C' and the Post-Test Grade is 'A', then the progress is +2)

SCHOOL GRADE - BB

Status Gr. B (0) Performance Gr. B (0)

OVERALL PERFORMANCE GRADES

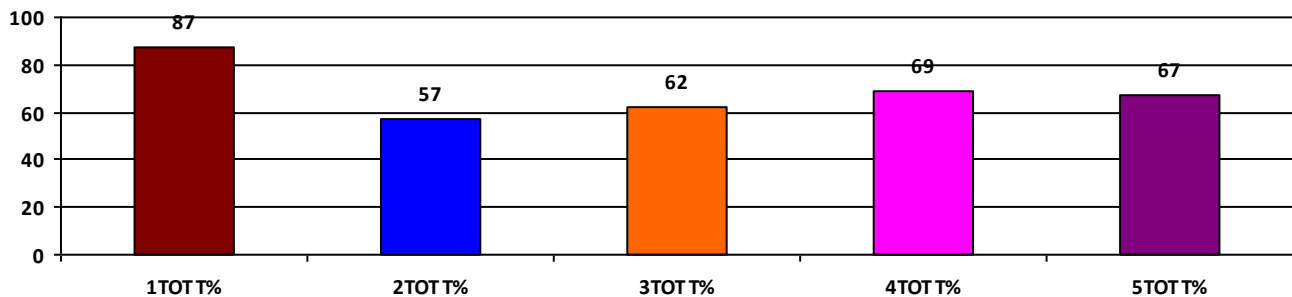
	Boys	Girls	Total
SCHOOL GR.	B	B	B
Diff. to Pre-Test	(0)	(0)	(0)
DIST. GR.	B	B	B
STATE GR.	B	B	B

CLASSWISE APPEARED

DETAILS	I STD	II STD	III STD	IV STD	V STD
BOYS	8	9	8	5	7
GIRLS	4	3	4	9	2
TOTAL	12	12	12	14	9
Diff. to Pre-Test	(0)	(-1)	(+1)	(0)	(0)

CLASSWISE PERFORMANCE GRADES (% of marks)

DETAILS	I STD	II STD	III STD	IV STD	V STD
%	87	57	62	69	67
SCHOOL GR.	A	B	B	B	B
Diff. to Pre-Test	(0)	(+1)	(+1)	(0)	(0)
DIST. GR.	A	B	B	B	B
STATE GR.	A	B	B	B	B



GRADEWISE PERFORMANCE (NO. OF STUDENTS)

ENGLISH	1 Std	2 Std	3 Std	4 Std	5 Std	TAMIL	1 Std	2 Std	3 Std	4 Std	5 Std
GR. A	11	1	4	8	4	GR. A	12	6	5	7	3
GR. B	1	4	6	4	3	GR. B	0	3	5	4	4
GR. C	0	6	0	0	2	GR. C	0	2	0	1	2
GR. D	0	1	0	1	0	GR. D	0	1	0	1	0
GR. E	0	0	2	1	0	GR. E	0	0	2	1	0

DEAL POST TEST 2019-20 - SCHOOL REPORT CARD

PONDY
CEO

34020305302 **GHS, THIRUBUVANAI**

All Grades represent the following scorings in % *

GRADE A - >75	* School Status Grade represents the total enrollment of the school (Not %)
GRADE B - 51 TO 75	
GRADE C - 26 TO 50	
GRADE D - 10 TO 25	
GRADE E - <10	

Note: The Values given in the brackets denote the difference between the Pre and Post Test Scores.
(For Example: If the Pre-Test Grade is 'C' and the Post-Test Grade is 'A', then the progress is +2)

SCHOOL GRADE - AB

Status Gr. A (0)	Performance Gr. B (0)
------------------	-----------------------

OVERALL PERFORMANCE GRADES

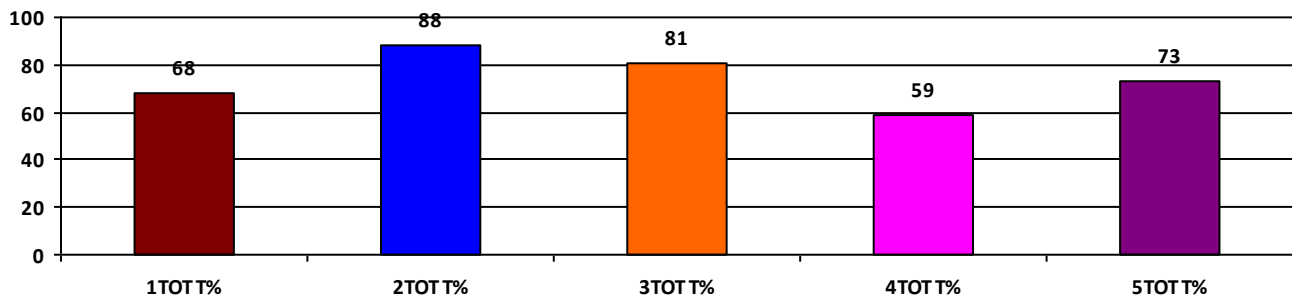
	Boys	Girls	Total
SCHOOL GR.	B	A	B
Diff. to Pre-Test	(0)	(+1)	(0)
DIST. GR.	B	B	B
STATE GR.	B	B	B

CLASSWISE APPEARED

DETAILS	I STD	II STD	III STD	IV STD	V STD
BOYS	3	7	6	8	7
GIRLS	4	7	10	9	20
TOTAL	7	14	16	17	27
Diff. to Pre-Test	(+1)	(-1)	(+3)	(0)	(+3)

CLASSWISE PERFORMANCE GRADES (% of marks)

DETAILS	I STD	II STD	III STD	IV STD	V STD
%	68	88	81	59	73
SCHOOL GR.	B	A	A	B	B
Diff. to Pre-Test	(0)	(+1)	(+1)	(0)	(0)
DIST. GR.	A	B	B	B	B
STATE GR.	A	B	B	B	B



GRADEWISE PERFORMANCE (NO. OF STUDENTS)

ENGLISH	1 Std	2 Std	3 Std	4 Std	5 Std	TAMIL	1 Std	2 Std	3 Std	4 Std	5 Std
GR. A	2	12	10	5	14	GR. A	2	10	13	8	18
GR. B	2	1	3	3	6	GR. B	5	4	2	4	7
GR. C	3	1	2	7	4	GR. C	0	0	0	2	0
GR. D	0	0	1	2	3	GR. D	0	0	1	3	2
GR. E	0	0	0	0	0	GR. E	0	0	0	0	0

DEAL POST TEST 2019-20 - SCHOOL REPORT CARD

PONDY
CEO

34020305701 GHS, URUVAIYAR

All Grades represent the following scorings in % *

GRADE A - >75	* School Status Grade represents the total enrollment of the school (Not %)
GRADE B - 51 TO 75	
GRADE C - 26 TO 50	
GRADE D - 10 TO 25	
GRADE E - <10	

Note: The Values given in the brackets denote the difference between the Pre and Post Test Scores.
(For Example: If the Pre-Test Grade is 'C' and the Post-Test Grade is 'A', then the progress is +2)

SCHOOL GRADE - BA

Status Gr. B (0) Performance Gr. A(+1)

OVERALL PERFORMANCE GRADES

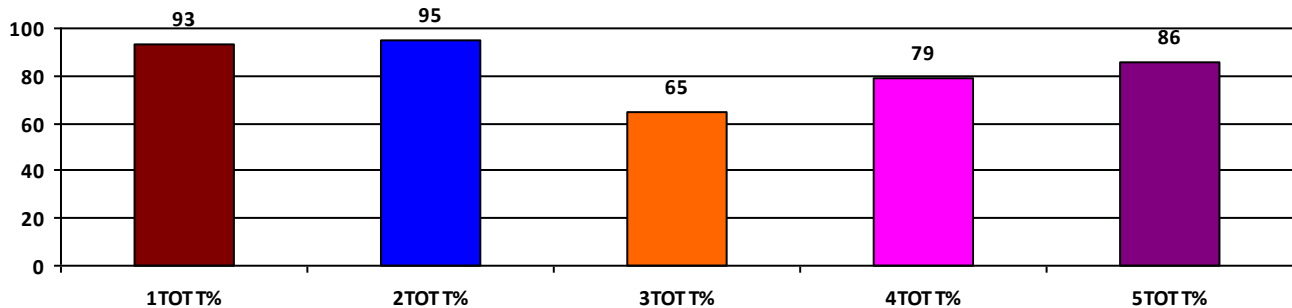
	Boys	Girls	Total
SCHOOL GR.	A	A	A
Diff. to Pre-Test	(+1)	(+1)	(+1)
DIST. GR.	B	B	B
STATE GR.	B	B	B

CLASSWISE APPEARED

DETAILS	I STD	II STD	III STD	IV STD	V STD
BOYS	2	3	5	9	10
GIRLS	2	3	3	14	13
TOTAL	4	6	8	23	23
Diff. to Pre-Test	(+1)	(0)	(+1)	(+1)	(-1)

CLASSWISE PERFORMANCE GRADES (% of marks)

DETAILS	I STD	II STD	III STD	IV STD	V STD
%	93	95	65	79	86
SCHOOL GR.	A	A	B	A	A
Diff. to Pre-Test	(+1)	(+1)	(0)	(+1)	(+1)
DIST. GR.	A	B	B	B	B
STATE GR.	A	B	B	B	B



GRADEWISE PERFORMANCE (NO. OF STUDENTS)

ENGLISH	1 Std	2 Std	3 Std	4 Std	5 Std	TAMIL	1 Std	2 Std	3 Std	4 Std	5 Std
GR. A	3	5	2	16	19	GR. A	4	6	4	18	21
GR. B	1	1	5	4	3	GR. B	0	0	3	4	1
GR. C	0	0	0	1	0	GR. C	0	0	0	0	1
GR. D	0	0	0	1	1	GR. D	0	0	0	0	0
GR. E	0	0	1	1	0	GR. E	0	0	1	1	0

DEAL POST TEST 2019-20 - SCHOOL REPORT CARD

PONDY
CEO

34020306001 GHS, VADHANUR

All Grades represent the following scorings in % *

GRADE A - >75	* School Status Grade represents the total enrollment of the school (Not %)
GRADE B - 51 TO 75	
GRADE C - 26 TO 50	
GRADE D - 10 TO 25	
GRADE E - <10	

Note: The Values given in the brackets denote the difference between the Pre and Post Test Scores.
(For Example: If the Pre-Test Grade is 'C' and the Post-Test Grade is 'A', then the progress is +2)

SCHOOL GRADE - AC

Status Gr. A (0)	Performance Gr. C (0)
------------------	-----------------------

OVERALL PERFORMANCE GRADES

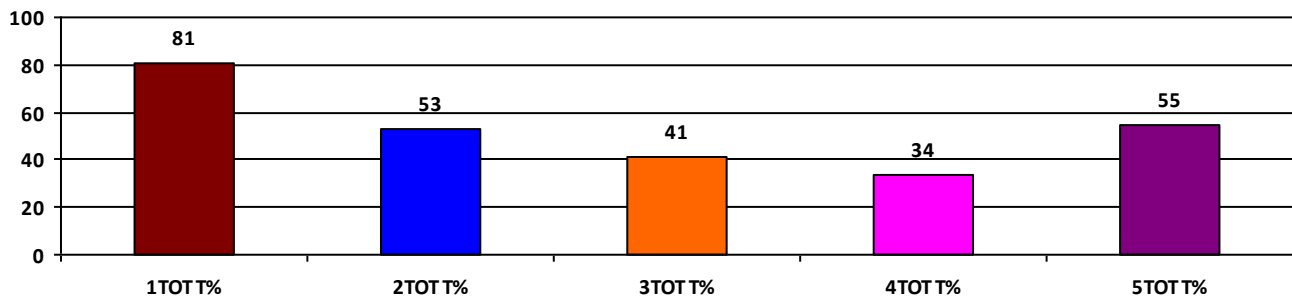
	Boys	Girls	Total
SCHOOL GR.	C	B	C
Diff. to Pre-Test	(0)	(0)	(0)
DIST. GR.	B	B	B
STATE GR.	B	B	B

CLASSWISE APPEARED

DETAILS	I STD	II STD	III STD	IV STD	V STD
BOYS	8	5	13	9	16
GIRLS	6	9	7	9	13
TOTAL	14	14	20	18	29
Diff. to Pre-Test	(+3)	(+1)	(+2)	(+5)	(+3)

CLASSWISE PERFORMANCE GRADES (% of marks)

DETAILS	I STD	II STD	III STD	IV STD	V STD
%	81	53	41	34	55
SCHOOL GR.	A	B	C	C	B
Diff. to Pre-Test	(+1)	(0)	(0)	(0)	(0)
DIST. GR.	A	B	B	B	B
STATE GR.	A	B	B	B	B



GRADEWISE PERFORMANCE (NO. OF STUDENTS)

ENGLISH	1 Std	2 Std	3 Std	4 Std	5 Std	TAMIL	1 Std	2 Std	3 Std	4 Std	5 Std
GR. A	8	2	0	0	6	GR. A	9	4	2	2	6
GR. B	5	3	2	3	13	GR. B	5	6	8	3	7
GR. C	1	7	13	7	6	GR. C	0	3	7	3	14
GR. D	0	0	4	7	3	GR. D	0	1	2	9	1
GR. E	0	2	1	1	1	GR. E	0	0	1	1	1

DEAL POST TEST 2019-20 - SCHOOL REPORT CARD

PONDY
CEO

34020306219 GHS, KANUVAPET

All Grades represent the following scorings in % *

GRADE A - >75	* School Status Grade represents the total enrollment of the school (Not %)
GRADE B - 51 TO 75	
GRADE C - 26 TO 50	
GRADE D - 10 TO 25	
GRADE E - <10	

Note: The Values given in the brackets denote the difference between the Pre and Post Test Scores.
(For Example: If the Pre-Test Grade is 'C' and the Post-Test Grade is 'A', then the progress is +2)

SCHOOL GRADE - AB

Status Gr. A (0)	Performance Gr. B (0)
------------------	-----------------------

OVERALL PERFORMANCE GRADES

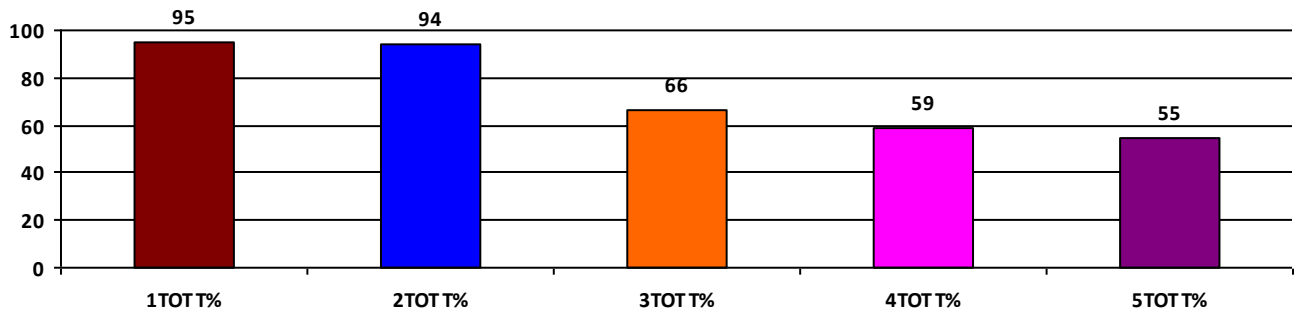
	Boys	Girls	Total
SCHOOL GR.	B	B	B
Diff. to Pre-Test	(+1)	(0)	(0)
DIST. GR.	B	B	B
STATE GR.	B	B	B

CLASSWISE APPEARED

DETAILS	I STD	II STD	III STD	IV STD	V STD
BOYS	9	9	9	14	15
GIRLS	3	8	10	9	14
TOTAL	12	17	19	23	29
Diff. to Pre-Test	(-3)	(-3)	(-1)	(+1)	(+2)

CLASSWISE PERFORMANCE GRADES (% of marks)

DETAILS	I STD	II STD	III STD	IV STD	V STD
%	95	94	66	59	55
SCHOOL GR.	A	A	B	B	B
Diff. to Pre-Test	(+1)	(+1)	(+1)	(+1)	(0)
DIST. GR.	A	B	B	B	B
STATE GR.	A	B	B	B	B



GRADEWISE PERFORMANCE (NO. OF STUDENTS)

ENGLISH	1 Std	2 Std	3 Std	4 Std	5 Std	TAMIL	1 Std	2 Std	3 Std	4 Std	5 Std
GR. A	11	12	3	2	7	GR. A	12	17	10	9	12
GR. B	1	4	13	9	11	GR. B	0	0	8	9	3
GR. C	0	1	2	11	6	GR. C	0	0	0	4	5
GR. D	0	0	0	0	4	GR. D	0	0	0	0	8
GR. E	0	0	1	1	1	GR. E	0	0	1	1	1

DEAL POST TEST 2019-20 - SCHOOL REPORT CARD

PONDY
CEO

34020306402 GMS, KEEZAGRAGARAM

All Grades represent the following scorings in % *

GRADE A - >75	* School Status Grade represents the total enrollment of the school (Not %)
GRADE B - 51 TO 75	
GRADE C - 26 TO 50	
GRADE D - 10 TO 25	
GRADE E - <10	

Note: The Values given in the brackets denote the difference between the Pre and Post Test Scores.
(For Example: If the Pre-Test Grade is 'C' and the Post-Test Grade is 'A', then the progress is +2)

SCHOOL GRADE - BB

Status Gr. B (0) Performance Gr. B(+1)

OVERALL PERFORMANCE GRADES

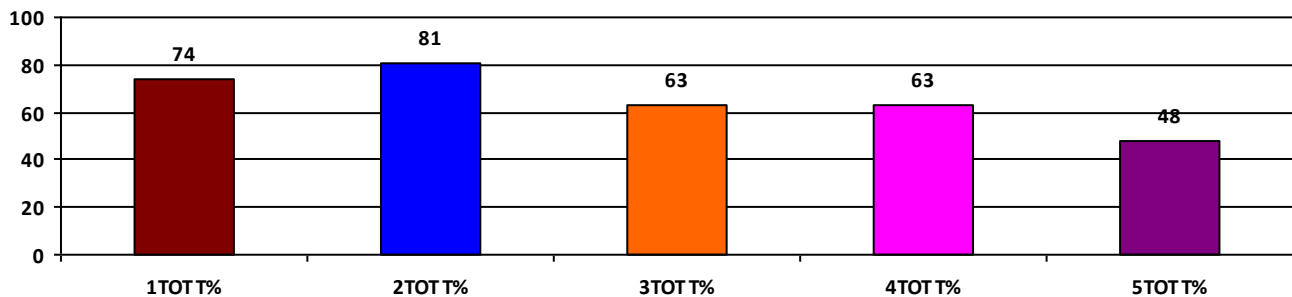
	Boys	Girls	Total
SCHOOL GR.	B	B	B
Diff. to Pre-Test	(+1)	(+1)	(+1)
DIST. GR.	B	B	B
STATE GR.	B	B	B

CLASSWISE APPEARED

DETAILS	I STD	II STD	III STD	IV STD	V STD
BOYS	7	3	8	6	9
GIRLS	7	3	12	6	7
TOTAL	14	6	20	12	16
Diff. to Pre-Test	(-1)	(-1)	(0)	(0)	(0)

CLASSWISE PERFORMANCE GRADES (% of marks)

DETAILS	I STD	II STD	III STD	IV STD	V STD
%	74	81	63	63	48
SCHOOL GR.	B	A	B	B	C
Diff. to Pre-Test	(0)	(+1)	(0)	(+1)	(+1)
DIST. GR.	A	B	B	B	B
STATE GR.	A	B	B	B	B



GRADEWISE PERFORMANCE (NO. OF STUDENTS)

ENGLISH	1 Std	2 Std	3 Std	4 Std	5 Std	TAMIL	1 Std	2 Std	3 Std	4 Std	5 Std
GR. A	8	4	7	6	3	GR. A	9	3	11	7	2
GR. B	3	2	8	2	6	GR. B	4	3	4	1	5
GR. C	3	0	0	2	5	GR. C	1	0	1	3	3
GR. D	0	0	3	1	1	GR. D	0	0	3	0	5
GR. E	0	0	2	1	1	GR. E	0	0	1	1	1

DEAL POST TEST 2019-20 - SCHOOL REPORT CARD

PONDY
CEO

34020306604 **GHS, MADAGADIPET PALAYAM**

All Grades represent the following scorings in % *

GRADE A - >75	* School Status Grade represents the total enrollment of the school (Not %)
GRADE B - 51 TO 75	
GRADE C - 26 TO 50	
GRADE D - 10 TO 25	
GRADE E - <10	

Note: The Values given in the brackets denote the difference between the Pre and Post Test Scores.
(For Example: If the Pre-Test Grade is 'C' and the Post-Test Grade is 'A', then the progress is +2)

SCHOOL GRADE - AB

Status Gr. A (0)	Performance Gr. B (0)
------------------	-----------------------

OVERALL PERFORMANCE GRADES

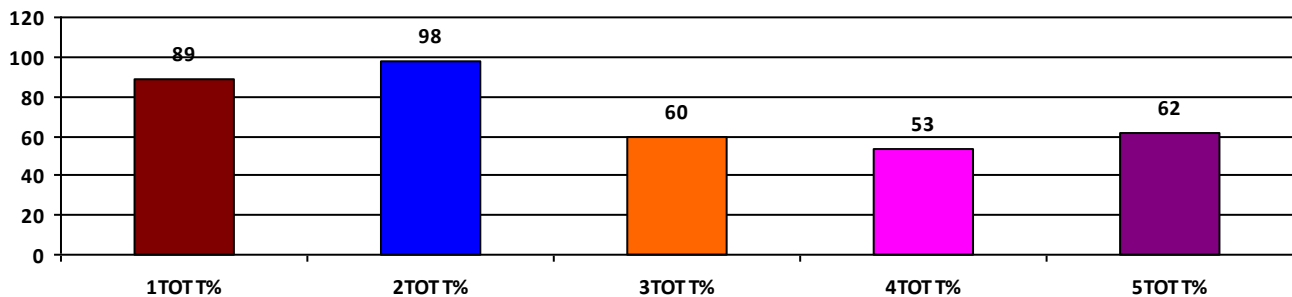
	Boys	Girls	Total
SCHOOL GR.	B	A	B
Diff. to Pre-Test	(0)	(+1)	(0)
DIST. GR.	B	B	B
STATE GR.	B	B	B

CLASSWISE APPEARED

DETAILS	I STD	II STD	III STD	IV STD	V STD
BOYS	11	8	13	17	21
GIRLS	17	11	20	12	20
TOTAL	28	19	33	29	41
Diff. to Pre-Test	(0)	(+2)	(+5)	(+6)	(+3)

CLASSWISE PERFORMANCE GRADES (% of marks)

DETAILS	I STD	II STD	III STD	IV STD	V STD
%	89	98	60	53	62
SCHOOL GR.	A	A	B	B	B
Diff. to Pre-Test	(+1)	(+1)	(0)	(0)	(0)
DIST. GR.	A	B	B	B	B
STATE GR.	A	B	B	B	B



GRADEWISE PERFORMANCE (NO. OF STUDENTS)

ENGLISH	1 Std	2 Std	3 Std	4 Std	5 Std	TAMIL	1 Std	2 Std	3 Std	4 Std	5 Std
GR. A	23	18	12	8	15	GR. A	25	18	15	11	20
GR. B	5	1	8	6	13	GR. B	3	1	6	8	7
GR. C	0	0	8	7	7	GR. C	0	0	7	4	4
GR. D	0	0	0	7	1	GR. D	0	0	1	4	5
GR. E	0	0	5	1	5	GR. E	0	0	4	2	5

DEAL POST TEST 2019-20 - SCHOOL REPORT CARD

PONDY
CEO

34020306701 GHS, KODATHUR

All Grades represent the following scorings in % *

GRADE A - >75	
GRADE B - 51 TO 75	* School Status Grade
GRADE C - 26 TO 50	represents the total
GRADE D - 10 TO 25	enrollment of the
GRADE E - <10	school (Not %)

Note: The Values given in the brackets denote the difference between the Pre and Post Test Scores.
(For Example: If the Pre-Test Grade is 'C' and the Post-Test Grade is 'A', then the progress is +2)

SCHOOL GRADE - AB

Status Gr. A (0)	Performance Gr. B (0)
------------------	-----------------------

OVERALL PERFORMANCE GRADES

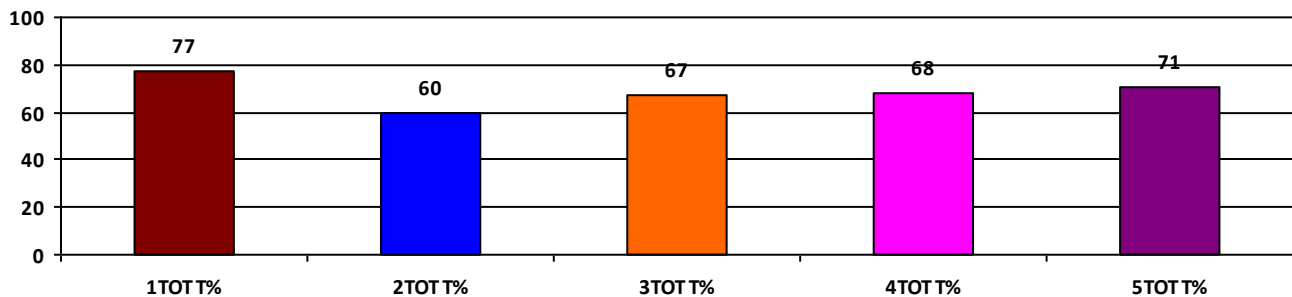
	Boys	Girls	Total
SCHOOL GR.	B	B	B
Diff. to Pre-Test	(+1)	(0)	(0)
DIST. GR.	B	B	B
STATE GR.	B	B	B

CLASSWISE APPEARED

DETAILS	I STD	II STD	III STD	IV STD	V STD
BOYS	6	8	17	16	14
GIRLS	10	8	17	19	15
TOTAL	16	16	34	35	29
Diff. to Pre-Test	(-1)	(+3)	(+2)	(0)	(+1)

CLASSWISE PERFORMANCE GRADES (% of marks)

DETAILS	I STD	II STD	III STD	IV STD	V STD
%	77	60	67	68	71
SCHOOL GR.	A	B	B	B	B
Diff. to Pre-Test	(+1)	(+1)	(+1)	(0)	(0)
DIST. GR.	A	B	B	B	B
STATE GR.	A	B	B	B	B



GRADEWISE PERFORMANCE (NO. OF STUDENTS)

ENGLISH	1 Std	2 Std	3 Std	4 Std	5 Std	TAMIL	1 Std	2 Std	3 Std	4 Std	5 Std
GR. A	4	0	9	8	13	GR. A	12	10	24	25	19
GR. B	10	8	9	12	7	GR. B	4	3	8	9	6
GR. C	2	4	12	13	7	GR. C	0	2	1	0	2
GR. D	0	2	4	2	2	GR. D	0	1	1	1	1
GR. E	0	2	0	0	0	GR. E	0	0	0	0	1

DEAL POST TEST 2019-20 - SCHOOL REPORT CARD

PONDY
CEO

34020306901 **GHS, SUTHUKENI**

All Grades represent the following scorings in % *

GRADE A - >75	
GRADE B - 51 TO 75	* School Status Grade
GRADE C - 26 TO 50	represents the total
GRADE D - 10 TO 25	enrollment of the
GRADE E - <10	school (Not %)

Note: The Values given in the brackets denote the difference between the Pre and Post Test Scores.
(For Example: If the Pre-Test Grade is 'C' and the Post-Test Grade is 'A', then the progress is +2)

SCHOOL GRADE - BB

Status Gr. B (0) Performance Gr. B(+1)

OVERALL PERFORMANCE GRADES

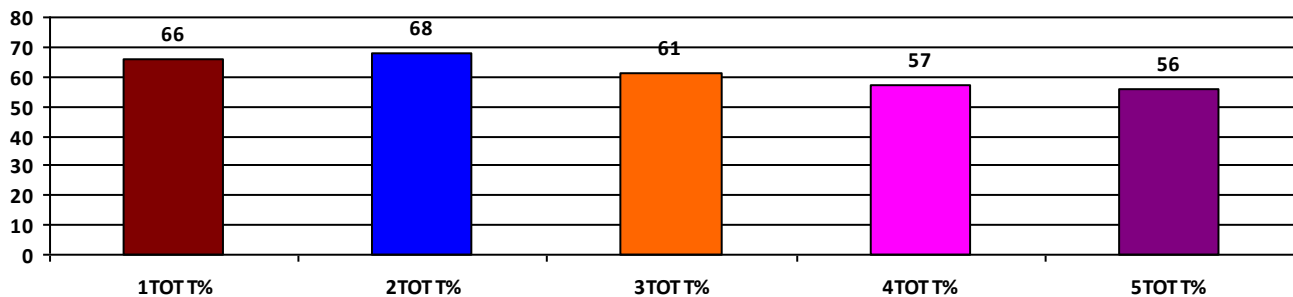
	Boys	Girls	Total
SCHOOL GR.	B	B	B
Diff. to Pre-Test	(0)	(+1)	(+1)
DIST. GR.	B	B	B
STATE GR.	B	B	B

CLASSWISE APPEARED

DETAILS	I STD	II STD	III STD	IV STD	V STD
BOYS	1	6	11	5	11
GIRLS	6	3	11	10	8
TOTAL	7	9	22	15	19
Diff. to Pre-Test	(0)	(+1)	(0)	(+2)	(-1)

CLASSWISE PERFORMANCE GRADES (% of marks)

DETAILS	I STD	II STD	III STD	IV STD	V STD
%	66	68	61	57	56
SCHOOL GR.	B	B	B	B	B
Diff. to Pre-Test	(+1)	(+1)	(0)	(+1)	(0)
DIST. GR.	A	B	B	B	B
STATE GR.	A	B	B	B	B



GRADEWISE PERFORMANCE (NO. OF STUDENTS)

ENGLISH	1 Std	2 Std	3 Std	4 Std	5 Std	TAMIL	1 Std	2 Std	3 Std	4 Std	5 Std
GR. A	2	4	2	4	2	GR. A	2	4	11	6	7
GR. B	5	4	12	5	9	GR. B	3	2	4	4	6
GR. C	0	1	8	1	6	GR. C	2	3	7	3	3
GR. D	0	0	0	5	1	GR. D	0	0	0	2	2
GR. E	0	0	0	0	1	GR. E	0	0	0	0	1