

DEAL POST TEST 2019-20 - SCHOOL REPORT CARD

YANAM
DDSE

34010100101 MOTHER THERESSA GOVT.PRIMARY SCHOOL,METTAK

All Grades represent the following scorings in % *

GRADE A - >75	
GRADE B - 51 TO 75	* School Status Grade
GRADE C - 26 TO 50	represents the total
GRADE D - 10 TO 25	enrollment of the
GRADE E - <10	school (Not %)

Note: The Values given in the brackets denote the difference between the Pre and Post Test Scores.
(For Example: If the Pre-Test Grade is 'C' and the Post-Test Grade is 'A', then the progress is +2)

SCHOOL GRADE - AA

Status Gr. A (0)	Performance Gr. A(+1)
------------------	-----------------------

OVERALL PERFORMANCE GRADES

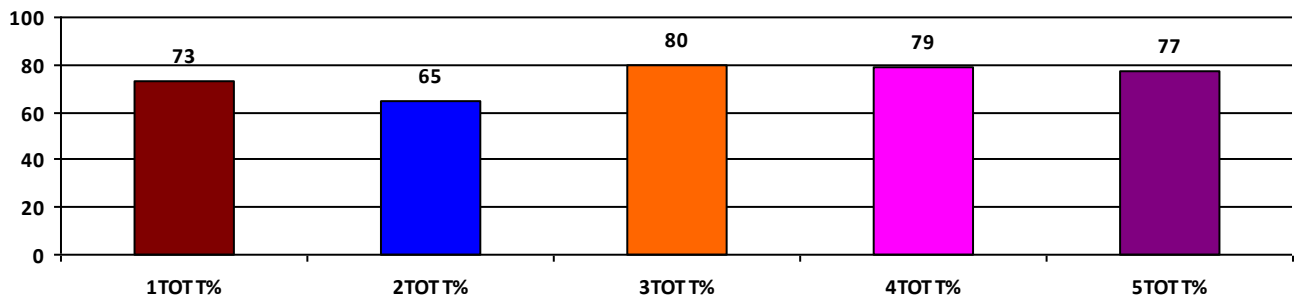
	Boys	Girls	Total
SCHOOL GR.	B	A	A
Diff. to Pre-Test	(0)	(+1)	(+1)
DIST. GR.	B	A	B
STATE GR.	B	B	B

CLASSWISE APPEARED

DETAILS	I STD	II STD	III STD	IV STD	V STD
BOYS	20	13	14	17	16
GIRLS	11	12	11	14	20
TOTAL	31	25	25	31	36
Diff. to Pre-Test	(+2)	(+1)	(+1)	(0)	(-1)

CLASSWISE PERFORMANCE GRADES (% of marks)

DETAILS	I STD	II STD	III STD	IV STD	V STD
%	73	65	80	79	77
SCHOOL GR.	B	B	A	A	A
Diff. to Pre-Test	(0)	(0)	(+1)	(+1)	(+1)
DIST. GR.	B	B	B	B	B
STATE GR.	A	B	B	B	B



GRADEWISE PERFORMANCE (NO. OF STUDENTS)

ENGLISH	1 Std	2 Std	3 Std	4 Std	5 Std	TAMIL	1 Std	2 Std	3 Std	4 Std	5 Std
GR. A	16	10	16	16	22	GR. A	15	7	19	28	26
GR. B	11	5	4	10	9	GR. B	13	8	4	3	3
GR. C	3	9	5	5	4	GR. C	3	10	2	0	6
GR. D	1	1	0	0	0	GR. D	0	0	0	0	0
GR. E	0	0	0	0	1	GR. E	0	0	0	0	1

DEAL POST TEST 2019-20 - SCHOOL REPORT CARD

YANAM
DDSE

34010100201 K.S.P.V.R.N. GOVT. BOYS SCHOOL (CBS) -YANAM

All Grades represent the following scorings in % *

GRADE A - >75	* School Status Grade represents the total enrollment of the school (Not %)
GRADE B - 51 TO 75	
GRADE C - 26 TO 50	
GRADE D - 10 TO 25	
GRADE E - <10	

Note: The Values given in the brackets denote the difference between the Pre and Post Test Scores.
(For Example: If the Pre-Test Grade is 'C' and the Post-Test Grade is 'A', then the progress is +2)

SCHOOL GRADE - AA

Status Gr. A (0)	Performance Gr. A(+1)
------------------	-----------------------

OVERALL PERFORMANCE GRADES

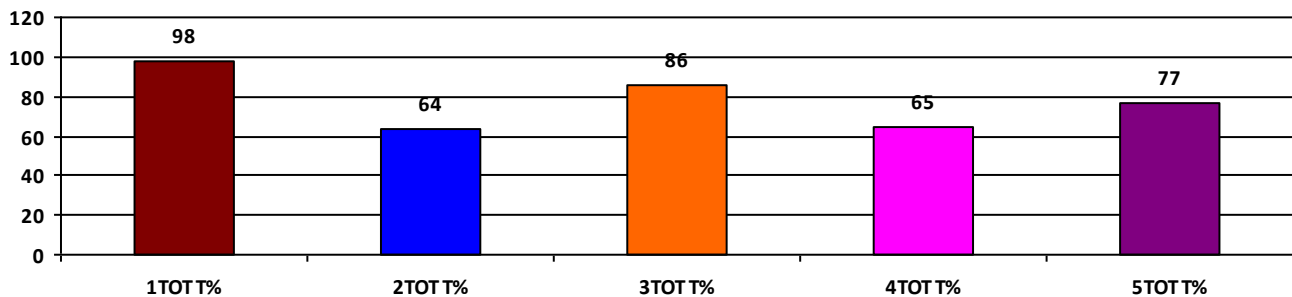
	Boys	Girls	Total
SCHOOL GR.	A	A	A
Diff. to Pre-Test	(+1)	(+1)	(+1)
DIST. GR.	B	A	B
STATE GR.	B	B	B

CLASSWISE APPEARED

DETAILS	I STD	II STD	III STD	IV STD	V STD
BOYS	8	9	15	5	5
GIRLS	7	10	9	6	10
TOTAL	15	19	24	11	15
Diff. to Pre-Test	(+2)	(+1)	(+5)	(+1)	(0)

CLASSWISE PERFORMANCE GRADES (% of marks)

DETAILS	I STD	II STD	III STD	IV STD	V STD
%	98	64	86	65	77
SCHOOL GR.	A	B	A	B	A
Diff. to Pre-Test	(+1)	(0)	(+2)	(+1)	(+2)
DIST. GR.	B	B	B	B	B
STATE GR.	A	B	B	B	B



GRADEWISE PERFORMANCE (NO. OF STUDENTS)

ENGLISH	1 Std	2 Std	3 Std	4 Std	5 Std	TAMIL	1 Std	2 Std	3 Std	4 Std	5 Std
GR. A	15	6	23	3	8	GR. A	15	3	23	3	10
GR. B	0	10	0	3	7	GR. B	0	10	0	8	5
GR. C	0	3	0	5	0	GR. C	0	6	0	0	0
GR. D	0	0	0	0	0	GR. D	0	0	0	0	0
GR. E	0	0	1	0	0	GR. E	0	0	1	0	0

DEAL POST TEST 2019-20 - SCHOOL REPORT CARD

YANAM
DDSE

34010100202 **INDIRA GANDHI GOVT. GIRLS PRIMARY SCHOOL - YAN**

All Grades represent the following scorings in % *

GRADE A - >75	* School Status Grade represents the total enrollment of the school (Not %)
GRADE B - 51 TO 75	
GRADE C - 26 TO 50	
GRADE D - 10 TO 25	
GRADE E - <10	

Note: The Values given in the brackets denote the difference between the Pre and Post Test Scores.
(For Example: If the Pre-Test Grade is 'C' and the Post-Test Grade is 'A', then the progress is +2)

SCHOOL GRADE - AA

Status Gr. A (0)	Performance Gr. A(+1)
------------------	-----------------------

OVERALL PERFORMANCE GRADES

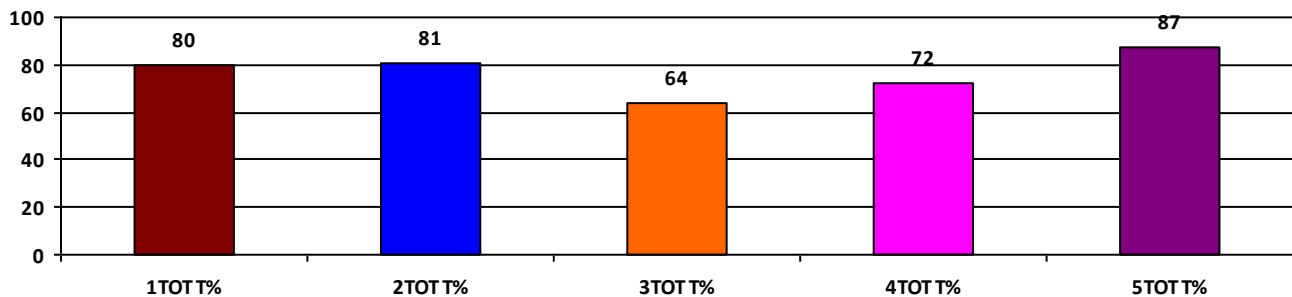
	Boys	Girls	Total
SCHOOL GR.	B	A	A
Diff. to Pre-Test	(0)	(+1)	(+1)
DIST. GR.	B	A	B
STATE GR.	B	B	B

CLASSWISE APPEARED

DETAILS	I STD	II STD	III STD	IV STD	V STD
BOYS	5	12	6	6	10
GIRLS	10	6	9	10	11
TOTAL	15	18	15	16	21
Diff. to Pre-Test	(0)	(0)	(-1)	(+1)	(+1)

CLASSWISE PERFORMANCE GRADES (% of marks)

DETAILS	I STD	II STD	III STD	IV STD	V STD
%	80	81	64	72	87
SCHOOL GR.	A	A	B	B	A
Diff. to Pre-Test	(+1)	(+1)	(0)	(+1)	(+1)
DIST. GR.	B	B	B	B	B
STATE GR.	A	B	B	B	B



GRADEWISE PERFORMANCE (NO. OF STUDENTS)

ENGLISH	1 Std	2 Std	3 Std	4 Std	5 Std	TAMIL	1 Std	2 Std	3 Std	4 Std	5 Std
GR. A	10	14	3	6	18	GR. A	12	12	8	8	18
GR. B	2	2	8	8	2	GR. B	2	4	4	6	2
GR. C	2	1	4	2	1	GR. C	0	1	3	2	1
GR. D	0	0	0	0	0	GR. D	0	0	0	0	0
GR. E	1	1	0	0	0	GR. E	1	1	0	0	0

DEAL POST TEST 2019-20 - SCHOOL REPORT CARD

YANAM
DDSE

34010100205 SRIKRISHNADEVARAYA GOVT. PRIMARY SCHOOL - AGR

All Grades represent the following scorings in % *

GRADE A - >75	
GRADE B - 51 TO 75	* School Status Grade
GRADE C - 26 TO 50	represents the total
GRADE D - 10 TO 25	enrollment of the
GRADE E - <10	school (Not %)

Note: The Values given in the brackets denote the difference between the Pre and Post Test Scores.
(For Example: If the Pre-Test Grade is 'C' and the Post-Test Grade is 'A', then the progress is +2)

SCHOOL GRADE - CA

Status Gr. C (0) Performance Gr. A(+1)

OVERALL PERFORMANCE GRADES

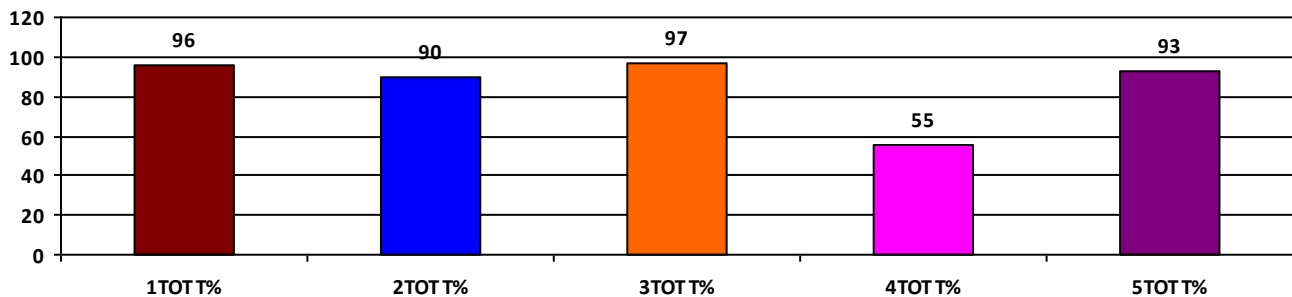
	Boys	Girls	Total
SCHOOL GR.	A	A	A
Diff. to Pre-Test	(+1)	(+1)	(+1)
DIST. GR.	B	A	B
STATE GR.	B	B	B

CLASSWISE APPEARED

DETAILS	I STD	II STD	III STD	IV STD	V STD
BOYS	1	3	4	6	7
GIRLS	3	1	2	3	1
TOTAL	4	4	6	9	8
Diff. to Pre-Test	(+1)	(-2)	(+1)	(0)	(0)

CLASSWISE PERFORMANCE GRADES (% of marks)

DETAILS	I STD	II STD	III STD	IV STD	V STD
%	96	90	97	55	93
SCHOOL GR.	A	A	A	B	A
Diff. to Pre-Test	(+1)	(+1)	(+1)	(+1)	(+1)
DIST. GR.	B	B	B	B	B
STATE GR.	A	B	B	B	B



GRADEWISE PERFORMANCE (NO. OF STUDENTS)

ENGLISH	1 Std	2 Std	3 Std	4 Std	5 Std	TAMIL	1 Std	2 Std	3 Std	4 Std	5 Std
GR. A	4	3	6	0	8	GR. A	4	3	6	3	8
GR. B	0	1	0	3	0	GR. B	0	1	0	3	0
GR. C	0	0	0	6	0	GR. C	0	0	0	3	0
GR. D	0	0	0	0	0	GR. D	0	0	0	0	0
GR. E	0	0	0	0	0	GR. E	0	0	0	0	0

DEAL POST TEST 2019-20 - SCHOOL REPORT CARD

YANAM
DDSE

34010100206 SRI DUNNA NAGA RAO GOVT. PRIMARY SCHOOL - AM

All Grades represent the following scorings in % *

GRADE A - >75	* School Status Grade represents the total enrollment of the school (Not %)
GRADE B - 51 TO 75	
GRADE C - 26 TO 50	
GRADE D - 10 TO 25	
GRADE E - <10	

Note: The Values given in the brackets denote the difference between the Pre and Post Test Scores.
(For Example: If the Pre-Test Grade is 'C' and the Post-Test Grade is 'A', then the progress is +2)

SCHOOL GRADE - CA

Status Gr. C (0) Performance Gr. A(+1)

OVERALL PERFORMANCE GRADES

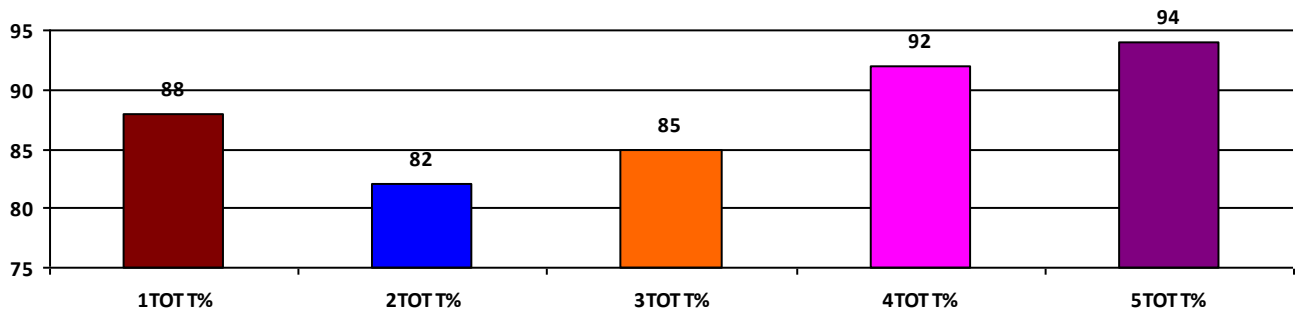
	Boys	Girls	Total
SCHOOL GR.	A	A	A
Diff. to Pre-Test	(+1)	(+1)	(+1)
DIST. GR.	B	A	B
STATE GR.	B	B	B

CLASSWISE APPEARED

DETAILS	I STD	II STD	III STD	IV STD	V STD
BOYS	1	2	4	0	3
GIRLS	2	2	1	4	2
TOTAL	3	4	5	4	5
Diff. to Pre-Test	(-2)	(0)	(-3)	(-1)	(0)

CLASSWISE PERFORMANCE GRADES (% of marks)

DETAILS	I STD	II STD	III STD	IV STD	V STD
%	88	82	85	92	94
SCHOOL GR.	A	A	A	A	A
Diff. to Pre-Test	(0)	(+1)	(+2)	(+1)	(+1)
DIST. GR.	B	B	B	B	B
STATE GR.	A	B	B	B	B



GRADEWISE PERFORMANCE (NO. OF STUDENTS)

ENGLISH	1 Std	2 Std	3 Std	4 Std	5 Std	TAMIL	1 Std	2 Std	3 Std	4 Std	5 Std
GR. A	2	4	3	4	5	GR. A	3	1	5	4	5
GR. B	1	0	2	0	0	GR. B	0	3	0	0	0
GR. C	0	0	0	0	0	GR. C	0	0	0	0	0
GR. D	0	0	0	0	0	GR. D	0	0	0	0	0
GR. E	0	0	0	0	0	GR. E	0	0	0	0	0

DEAL POST TEST 2019-20 - SCHOOL REPORT CARD

YANAM
DDSE

34010100214 DR. ZAKIR HUSSAIN GOVT. ENG. MED. PRIMARY SCHO

All Grades represent the following scorings in % *

GRADE A - >75	* School Status Grade represents the total enrollment of the school (Not %)
GRADE B - 51 TO 75	
GRADE C - 26 TO 50	
GRADE D - 10 TO 25	
GRADE E - <10	

Note: The Values given in the brackets denote the difference between the Pre and Post Test Scores.
(For Example: If the Pre-Test Grade is 'C' and the Post-Test Grade is 'A', then the progress is +2)

SCHOOL GRADE - AB

Status Gr. A (0)	Performance Gr. B(+1)
------------------	-----------------------

OVERALL PERFORMANCE GRADES

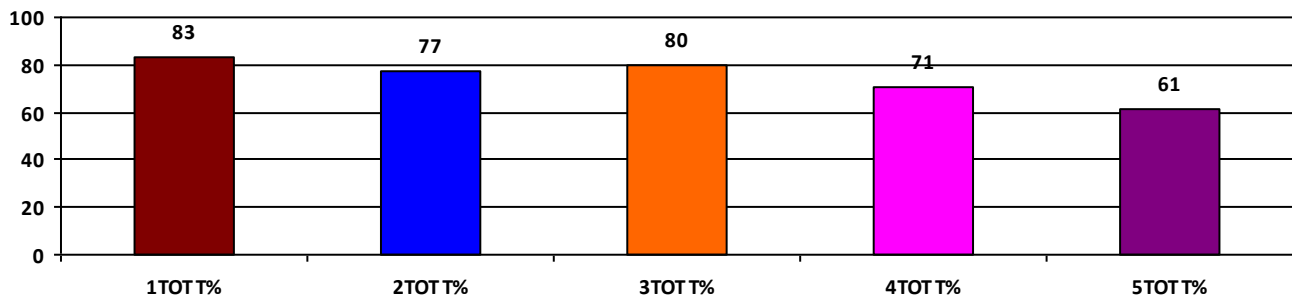
	Boys	Girls	Total
SCHOOL GR.	B	A	B
Diff. to Pre-Test	(+1)	(+2)	(+1)
DIST. GR.	B	A	B
STATE GR.	B	B	B

CLASSWISE APPEARED

DETAILS	I STD	II STD	III STD	IV STD	V STD
BOYS	12	11	15	17	37
GIRLS	15	14	18	22	19
TOTAL	27	25	33	39	56
Diff. to Pre-Test	(+2)	(-1)	(-6)	(-2)	(+3)

CLASSWISE PERFORMANCE GRADES (% of marks)

DETAILS	I STD	II STD	III STD	IV STD	V STD
%	83	77	80	71	61
SCHOOL GR.	A	A	A	B	B
Diff. to Pre-Test	(+2)	(+2)	(+2)	(0)	(+1)
DIST. GR.	B	B	B	B	B
STATE GR.	A	B	B	B	B



GRADEWISE PERFORMANCE (NO. OF STUDENTS)

ENGLISH	1 Std	2 Std	3 Std	4 Std	5 Std	TAMIL	1 Std	2 Std	3 Std	4 Std	5 Std
GR. A	22	13	27	20	18	GR. A	21	17	17	17	20
GR. B	4	9	3	15	24	GR. B	3	7	14	13	11
GR. C	1	3	1	3	7	GR. C	3	1	0	8	19
GR. D	0	0	2	0	7	GR. D	0	0	2	1	4
GR. E	0	0	0	1	0	GR. E	0	0	0	0	2

DEAL POST TEST 2019-20 - SCHOOL REPORT CARD

YANAM
DDSE

34010100217 GOVT. PRIMARY SCHOOL - VENKAT NAGAR

All Grades represent the following scorings in % *

GRADE A - >75	* School Status Grade represents the total enrollment of the school (Not %)
GRADE B - 51 TO 75	
GRADE C - 26 TO 50	
GRADE D - 10 TO 25	
GRADE E - <10	

Note: The Values given in the brackets denote the difference between the Pre and Post Test Scores.
(For Example: If the Pre-Test Grade is 'C' and the Post-Test Grade is 'A', then the progress is +2)

SCHOOL GRADE - CA

Status Gr. C (0) Performance Gr. A(+1)

OVERALL PERFORMANCE GRADES

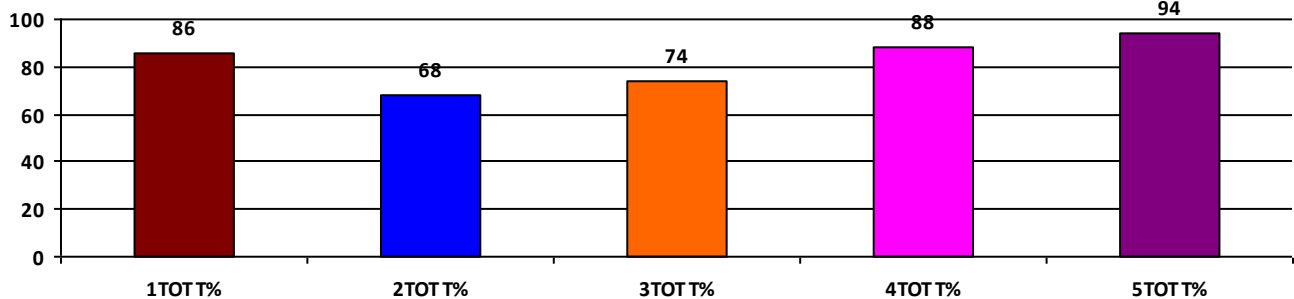
	Boys	Girls	Total
SCHOOL GR.	A	A	A
Diff. to Pre-Test	(+1)	(+1)	(+1)
DIST. GR.	B	A	B
STATE GR.	B	B	B

CLASSWISE APPEARED

DETAILS	I STD	II STD	III STD	IV STD	V STD
BOYS	8	3	6	3	2
GIRLS	2	6	4	2	4
TOTAL	10	9	10	5	6
Diff. to Pre-Test	(0)	(+3)	(+1)	(+1)	(+1)

CLASSWISE PERFORMANCE GRADES (% of marks)

DETAILS	I STD	II STD	III STD	IV STD	V STD
%	86	68	74	88	94
SCHOOL GR.	A	B	B	A	A
Diff. to Pre-Test	(+1)	(0)	(0)	(0)	(0)
DIST. GR.	B	B	B	B	B
STATE GR.	A	B	B	B	B



GRADEWISE PERFORMANCE (NO. OF STUDENTS)

ENGLISH	1 Std	2 Std	3 Std	4 Std	5 Std	TAMIL	1 Std	2 Std	3 Std	4 Std	5 Std
GR. A	7	6	6	5	6	GR. A	6	3	4	5	6
GR. B	3	2	4	0	0	GR. B	4	3	5	0	0
GR. C	0	0	0	0	0	GR. C	0	2	1	0	0
GR. D	0	0	0	0	0	GR. D	0	0	0	0	0
GR. E	0	1	0	0	0	GR. E	0	1	0	0	0

DEAL POST TEST 2019-20 - SCHOOL REPORT CARD

YANAM
DDSE

34010100301 SWAMI VIVEKANANDA GOVT. PRIMARY SCHOOL KURA

All Grades represent the following scorings in % *

GRADE A - >75	* School Status Grade represents the total enrollment of the school (Not %)
GRADE B - 51 TO 75	
GRADE C - 26 TO 50	
GRADE D - 10 TO 25	
GRADE E - <10	

Note: The Values given in the brackets denote the difference between the Pre and Post Test Scores.
(For Example: If the Pre-Test Grade is 'C' and the Post-Test Grade is 'A', then the progress is +2)

SCHOOL GRADE - CB

Status Gr. C (0) Performance Gr. B(+1)

OVERALL PERFORMANCE GRADES

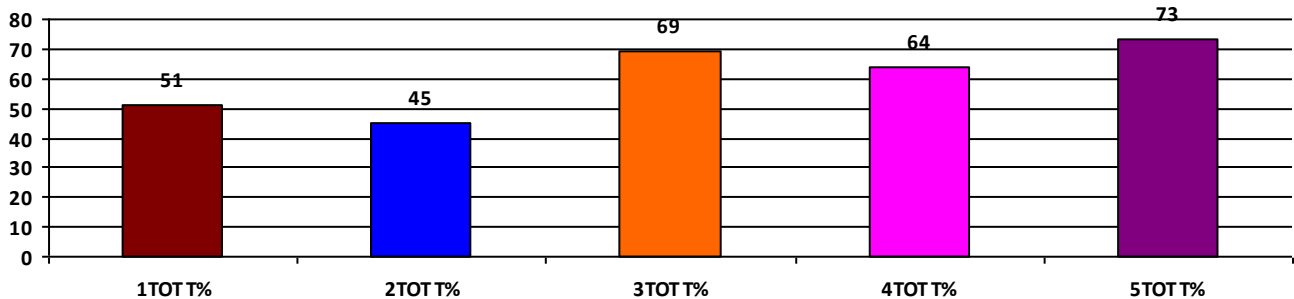
	Boys	Girls	Total
SCHOOL GR.	B	B	B
Diff. to Pre-Test	(+1)	(+1)	(+1)
DIST. GR.	B	A	B
STATE GR.	B	B	B

CLASSWISE APPEARED

DETAILS	I STD	II STD	III STD	IV STD	V STD
BOYS	3	1	3	1	3
GIRLS	5	5	2	3	5
TOTAL	8	6	5	4	8
Diff. to Pre-Test	(+1)	(-2)	(-1)	(0)	(-4)

CLASSWISE PERFORMANCE GRADES (% of marks)

DETAILS	I STD	II STD	III STD	IV STD	V STD
%	51	45	69	64	73
SCHOOL GR.	B	C	B	B	B
Diff. to Pre-Test	(+1)	(0)	(+1)	(+1)	(+1)
DIST. GR.	B	B	B	B	B
STATE GR.	A	B	B	B	B



GRADEWISE PERFORMANCE (NO. OF STUDENTS)

ENGLISH	1 Std	2 Std	3 Std	4 Std	5 Std	TAMIL	1 Std	2 Std	3 Std	4 Std	5 Std
GR. A	0	0	1	0	6	GR. A	1	0	3	3	4
GR. B	4	1	3	3	0	GR. B	5	4	1	0	2
GR. C	3	3	1	0	2	GR. C	1	1	1	0	2
GR. D	0	2	0	1	0	GR. D	0	0	0	1	0
GR. E	1	0	0	0	0	GR. E	1	1	0	0	0

DEAL POST TEST 2019-20 - SCHOOL REPORT CARD

YANAM
DDSE

34010100304 DR. B.R. AMBEDKAR GOVT. HIGH SCHOOL - FARAMPE

All Grades represent the following scorings in % *

GRADE A - >75	
GRADE B - 51 TO 75	* School Status Grade
GRADE C - 26 TO 50	represents the total
GRADE D - 10 TO 25	enrollment of the
GRADE E - <10	school (Not %)

Note: The Values given in the brackets denote the difference between the Pre and Post Test Scores.
(For Example: If the Pre-Test Grade is 'C' and the Post-Test Grade is 'A', then the progress is +2)

SCHOOL GRADE - BA

Status Gr. B (0) Performance Gr. A(+1)

OVERALL PERFORMANCE GRADES

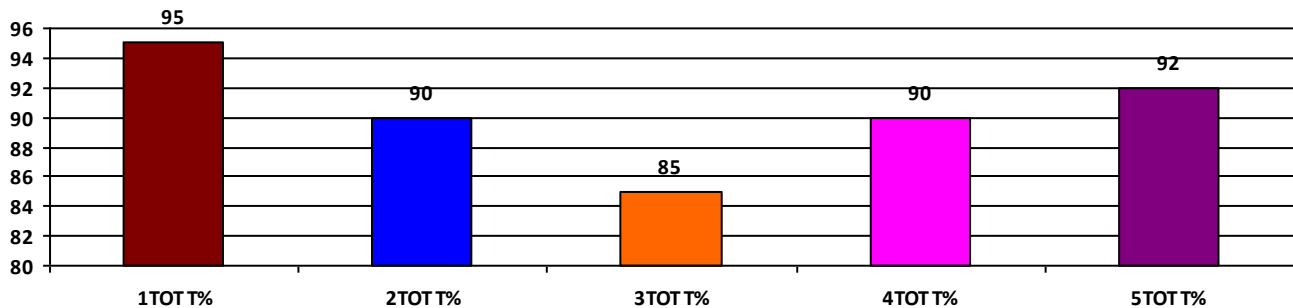
	Boys	Girls	Total
SCHOOL GR.	A	A	A
Diff. to Pre-Test	(+1)	(+1)	(+1)
DIST. GR.	B	A	B
STATE GR.	B	B	B

CLASSWISE APPEARED

DETAILS	I STD	II STD	III STD	IV STD	V STD
BOYS	5	7	5	7	3
GIRLS	5	3	6	6	4
TOTAL	10	10	11	13	7
Diff. to Pre-Test	(+1)	(+1)	(0)	(-1)	(0)

CLASSWISE PERFORMANCE GRADES (% of marks)

DETAILS	I STD	II STD	III STD	IV STD	V STD
%	95	90	85	90	92
SCHOOL GR.	A	A	A	A	A
Diff. to Pre-Test	(+1)	(+1)	(+1)	(+1)	(0)
DIST. GR.	B	B	B	B	B
STATE GR.	A	B	B	B	B



GRADEWISE PERFORMANCE (NO. OF STUDENTS)

ENGLISH	1 Std	2 Std	3 Std	4 Std	5 Std	TAMIL	1 Std	2 Std	3 Std	4 Std	5 Std
GR. A	10	9	6	10	7	GR. A	10	9	11	12	7
GR. B	0	1	5	3	0	GR. B	0	1	0	1	0
GR. C	0	0	0	0	0	GR. C	0	0	0	0	0
GR. D	0	0	0	0	0	GR. D	0	0	0	0	0
GR. E	0	0	0	0	0	GR. E	0	0	0	0	0

DEAL POST TEST 2019-20 - SCHOOL REPORT CARD

YANAM
DDSE

34010100305 GOVT. PRIMARY SCHOOL - AYYANNA NAGAR

All Grades represent the following scorings in % *

GRADE A - >75	* School Status Grade represents the total enrollment of the school (Not %)
GRADE B - 51 TO 75	
GRADE C - 26 TO 50	
GRADE D - 10 TO 25	
GRADE E - <10	

Note: The Values given in the brackets denote the difference between the Pre and Post Test Scores.
(For Example: If the Pre-Test Grade is 'C' and the Post-Test Grade is 'A', then the progress is +2)

SCHOOL GRADE - BA

Status Gr. B (-1) Performance Gr. A(+1)

OVERALL PERFORMANCE GRADES

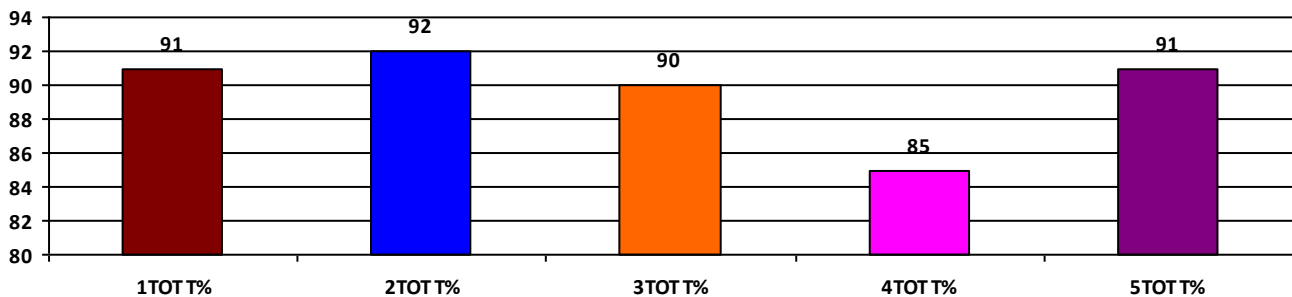
	Boys	Girls	Total
SCHOOL GR.	A	A	A
Diff. to Pre-Test	(+1)	(+1)	(+1)
DIST. GR.	B	A	B
STATE GR.	B	B	B

CLASSWISE APPEARED

DETAILS	I STD	II STD	III STD	IV STD	V STD
BOYS	3	8	3	7	8
GIRLS	8	7	15	10	6
TOTAL	11	15	18	17	14
Diff. to Pre-Test	(0)	(0)	(0)	(0)	(0)

CLASSWISE PERFORMANCE GRADES (% of marks)

DETAILS	I STD	II STD	III STD	IV STD	V STD
%	91	92	90	85	91
SCHOOL GR.	A	A	A	A	A
Diff. to Pre-Test	(+1)	(+1)	(+1)	(+1)	(0)
DIST. GR.	B	B	B	B	B
STATE GR.	A	B	B	B	B



GRADEWISE PERFORMANCE (NO. OF STUDENTS)

ENGLISH	1 Std	2 Std	3 Std	4 Std	5 Std	TAMIL	1 Std	2 Std	3 Std	4 Std	5 Std
GR. A	9	13	13	13	12	GR. A	11	13	16	15	12
GR. B	2	1	5	3	2	GR. B	0	1	2	1	2
GR. C	0	1	0	1	0	GR. C	0	0	0	1	0
GR. D	0	0	0	0	0	GR. D	0	1	0	0	0
GR. E	0	0	0	0	0	GR. E	0	0	0	0	0

DEAL POST TEST 2019-20 - SCHOOL REPORT CARD

YANAM
DDSE

34010100602 KONA VENKATARAJU GOVT. PRIMARY SCHOOL - KANA

All Grades represent the following scorings in % *

GRADE A - >75	
GRADE B - 51 TO 75	* School Status Grade
GRADE C - 26 TO 50	represents the total
GRADE D - 10 TO 25	enrollment of the
GRADE E - <10	school (Not %)

Note: The Values given in the brackets denote the difference between the Pre and Post Test Scores.
(For Example: If the Pre-Test Grade is 'C' and the Post-Test Grade is 'A', then the progress is +2)

SCHOOL GRADE - AB

Status Gr. A (0)	Performance Gr. B (0)
------------------	-----------------------

OVERALL PERFORMANCE GRADES

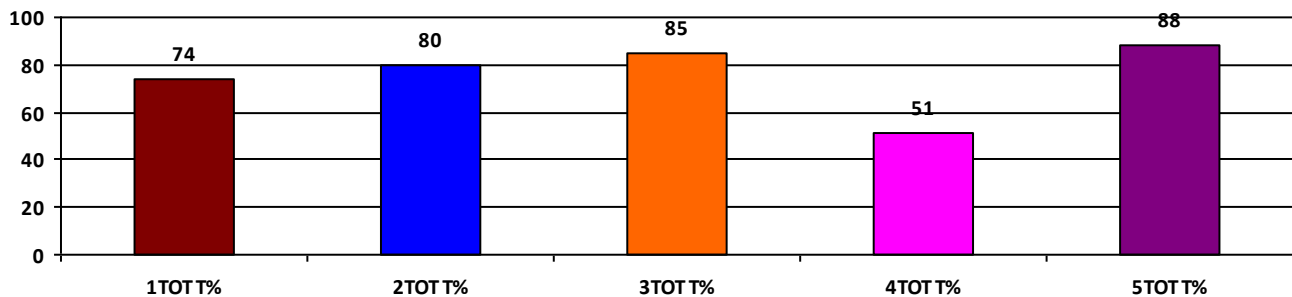
	Boys	Girls	Total
SCHOOL GR.	B	A	B
Diff. to Pre-Test	(0)	(+1)	(0)
DIST. GR.	B	A	B
STATE GR.	B	B	B

CLASSWISE APPEARED

DETAILS	I STD	II STD	III STD	IV STD	V STD
BOYS	6	15	8	17	14
GIRLS	13	4	13	19	16
TOTAL	19	19	21	36	30
Diff. to Pre-Test	(+1)	(-2)	(-1)	(+8)	(+1)

CLASSWISE PERFORMANCE GRADES (% of marks)

DETAILS	I STD	II STD	III STD	IV STD	V STD
%	74	80	85	51	88
SCHOOL GR.	B	A	A	B	A
Diff. to Pre-Test	(0)	(+1)	(+2)	(0)	(0)
DIST. GR.	B	B	B	B	B
STATE GR.	A	B	B	B	B



GRADEWISE PERFORMANCE (NO. OF STUDENTS)

ENGLISH	1 Std	2 Std	3 Std	4 Std	5 Std	TAMIL	1 Std	2 Std	3 Std	4 Std	5 Std
GR. A	11	13	15	6	26	GR. A	13	12	16	7	24
GR. B	5	4	5	15	4	GR. B	4	5	4	11	6
GR. C	2	2	1	8	0	GR. C	1	1	1	11	0
GR. D	0	0	0	6	0	GR. D	0	1	0	6	0
GR. E	1	0	0	1	0	GR. E	1	0	0	1	0

DEAL POST TEST 2019-20 - SCHOOL REPORT CARD

YANAM
DDSE

34010100603 **BABU JAGAJIVAN RAM GOVT. PRIMARY SCHOOL - BHE**

All Grades represent the following scorings in % *

GRADE A - >75	* School Status Grade represents the total enrollment of the school (Not %)
GRADE B - 51 TO 75	
GRADE C - 26 TO 50	
GRADE D - 10 TO 25	
GRADE E - <10	

Note: The Values given in the brackets denote the difference between the Pre and Post Test Scores.
(For Example: If the Pre-Test Grade is 'C' and the Post-Test Grade is 'A', then the progress is +2)

SCHOOL GRADE - CA

Status Gr. C (0) Performance Gr. A(+1)

OVERALL PERFORMANCE GRADES

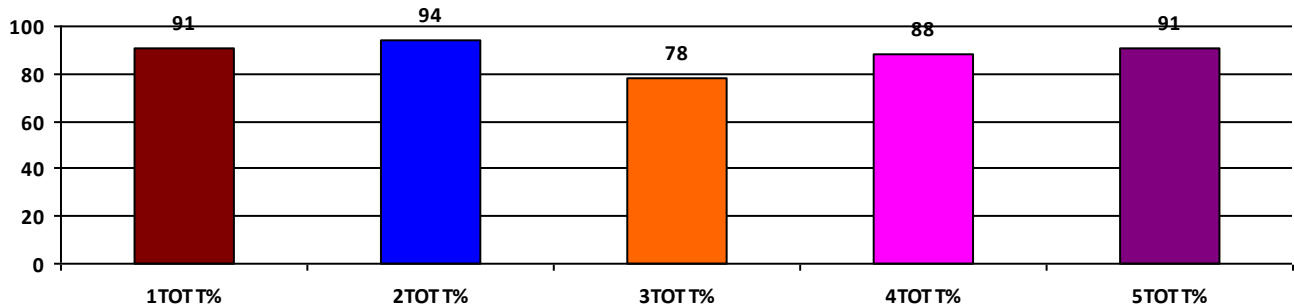
	Boys	Girls	Total
SCHOOL GR.	A	A	A
Diff. to Pre-Test	(+1)	(+1)	(+1)
DIST. GR.	B	A	B
STATE GR.	B	B	B

CLASSWISE APPEARED

DETAILS	I STD	II STD	III STD	IV STD	V STD
BOYS	1	0	2	1	5
GIRLS	6	5	10	6	5
TOTAL	7	5	12	7	10
Diff. to Pre-Test	(0)	(+1)	(+2)	(0)	(+1)

CLASSWISE PERFORMANCE GRADES (% of marks)

DETAILS	I STD	II STD	III STD	IV STD	V STD
%	91	94	78	88	91
SCHOOL GR.	A	A	A	A	A
Diff. to Pre-Test	(+1)	(0)	(+2)	(+1)	(+1)
DIST. GR.	B	B	B	B	B
STATE GR.	A	B	B	B	B



GRADEWISE PERFORMANCE (NO. OF STUDENTS)

ENGLISH	1 Std	2 Std	3 Std	4 Std	5 Std	TAMIL	1 Std	2 Std	3 Std	4 Std	5 Std
GR. A	6	5	9	6	9	GR. A	6	5	9	6	9
GR. B	0	0	0	0	0	GR. B	1	0	0	1	0
GR. C	1	0	1	1	1	GR. C	0	0	1	0	0
GR. D	0	0	2	0	0	GR. D	0	0	1	0	1
GR. E	0	0	0	0	0	GR. E	0	0	1	0	0

DEAL POST TEST 2019-20 - SCHOOL REPORT CARD

YANAM
DDSE

34010100701 PERUNTHALAIVAR KAMARAJAR GOVT. HIGH SCHOOL -

All Grades represent the following scorings in % *

GRADE A - >75	
GRADE B - 51 TO 75	* School Status Grade
GRADE C - 26 TO 50	represents the total
GRADE D - 10 TO 25	enrollment of the
GRADE E - <10	school (Not %)

Note: The Values given in the brackets denote the difference between the Pre and Post Test Scores.
(For Example: If the Pre-Test Grade is 'C' and the Post-Test Grade is 'A', then the progress is +2)

SCHOOL GRADE - AB

Status Gr. A (0)	Performance Gr. B(+1)
------------------	-----------------------

OVERALL PERFORMANCE GRADES

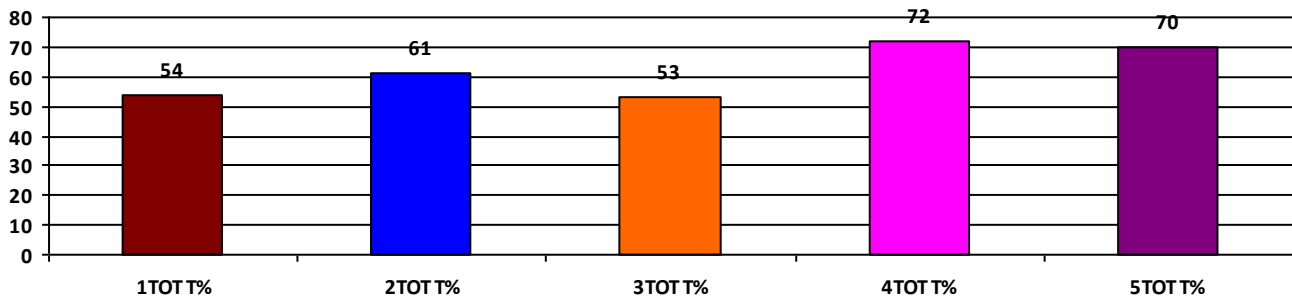
	Boys	Girls	Total
SCHOOL GR.	B	B	B
Diff. to Pre-Test	(+1)	(+1)	(+1)
DIST. GR.	B	A	B
STATE GR.	B	B	B

CLASSWISE APPEARED

DETAILS	I STD	II STD	III STD	IV STD	V STD
BOYS	8	15	14	16	23
GIRLS	15	16	11	17	21
TOTAL	23	31	25	33	44
Diff. to Pre-Test	(+2)	(+2)	(-1)	(+1)	(+1)

CLASSWISE PERFORMANCE GRADES (% of marks)

DETAILS	I STD	II STD	III STD	IV STD	V STD
%	54	61	53	72	70
SCHOOL GR.	B	B	B	B	B
Diff. to Pre-Test	(+1)	(+2)	(+1)	(+1)	(+1)
DIST. GR.	B	B	B	B	B
STATE GR.	A	B	B	B	B



GRADEWISE PERFORMANCE (NO. OF STUDENTS)

ENGLISH	1 Std	2 Std	3 Std	4 Std	5 Std	TAMIL	1 Std	2 Std	3 Std	4 Std	5 Std
GR. A	6	12	2	12	18	GR. A	2	11	3	17	17
GR. B	9	5	13	20	20	GR. B	12	10	10	15	20
GR. C	5	12	5	1	6	GR. C	6	10	10	1	7
GR. D	1	2	5	0	0	GR. D	1	0	2	0	0
GR. E	2	0	0	0	0	GR. E	2	0	0	0	0

DEAL POST TEST 2019-20 - SCHOOL REPORT CARD

YANAM
DDSE

34010100703 SUBRAMANIA BHARATI GOVT. PRIMARY SCHOOL - SAV

All Grades represent the following scorings in % *

GRADE A - >75	* School Status Grade represents the total enrollment of the school (Not %)
GRADE B - 51 TO 75	
GRADE C - 26 TO 50	
GRADE D - 10 TO 25	
GRADE E - <10	

Note: The Values given in the brackets denote the difference between the Pre and Post Test Scores.
(For Example: If the Pre-Test Grade is 'C' and the Post-Test Grade is 'A', then the progress is +2)

SCHOOL GRADE - AB

Status Gr. A (0) Performance Gr. B(+1)

OVERALL PERFORMANCE GRADES

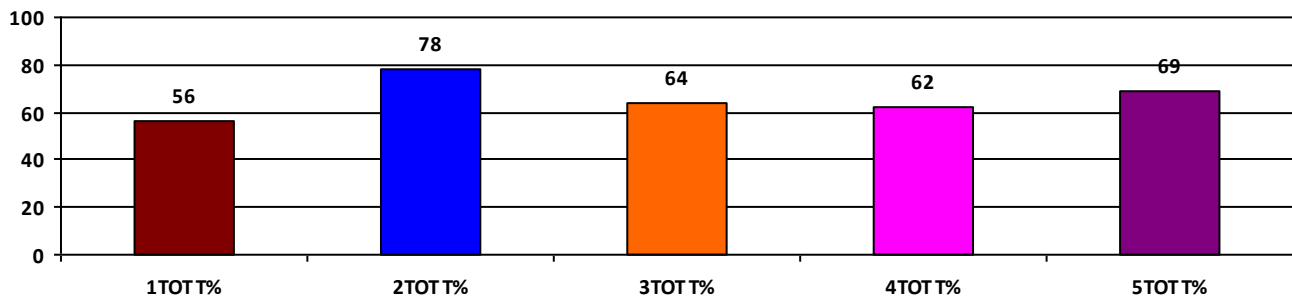
	Boys	Girls	Total
SCHOOL GR.	B	B	B
Diff. to Pre-Test	(+1)	(+1)	(+1)
DIST. GR.	B	A	B
STATE GR.	B	B	B

CLASSWISE APPEARED

DETAILS	I STD	II STD	III STD	IV STD	V STD
BOYS	21	24	28	28	26
GIRLS	29	28	33	27	34
TOTAL	50	52	61	55	60
Diff. to Pre-Test	(+1)	(+1)	(+4)	(+3)	(0)

CLASSWISE PERFORMANCE GRADES (% of marks)

DETAILS	I STD	II STD	III STD	IV STD	V STD
%	56	78	64	62	69
SCHOOL GR.	B	A	B	B	B
Diff. to Pre-Test	(+1)	(+1)	(+1)	(0)	(+1)
DIST. GR.	B	B	B	B	B
STATE GR.	A	B	B	B	B



GRADEWISE PERFORMANCE (NO. OF STUDENTS)

ENGLISH	1 Std	2 Std	3 Std	4 Std	5 Std	TAMIL	1 Std	2 Std	3 Std	4 Std	5 Std
GR. A	13	25	16	5	27	GR. A	12	39	37	35	32
GR. B	19	19	24	19	14	GR. B	23	8	11	11	22
GR. C	10	6	15	20	16	GR. C	7	2	7	8	6
GR. D	3	0	4	11	3	GR. D	4	2	5	1	0
GR. E	5	2	2	0	0	GR. E	4	1	1	0	0

DEAL POST TEST 2019-20 - SCHOOL REPORT CARD

YANAM
DDSE

34010113301 SIR ARTHUR COTTON GOVT. PRIMARY SCHOOL - ISUKA

All Grades represent the following scorings in % *

GRADE A - >75	* School Status Grade represents the total enrollment of the school (Not %)
GRADE B - 51 TO 75	
GRADE C - 26 TO 50	
GRADE D - 10 TO 25	
GRADE E - <10	

Note: The Values given in the brackets denote the difference between the Pre and Post Test Scores.
(For Example: If the Pre-Test Grade is 'C' and the Post-Test Grade is 'A', then the progress is +2)

SCHOOL GRADE - CA

Status Gr. C (0) Performance Gr. A (0)

OVERALL PERFORMANCE GRADES

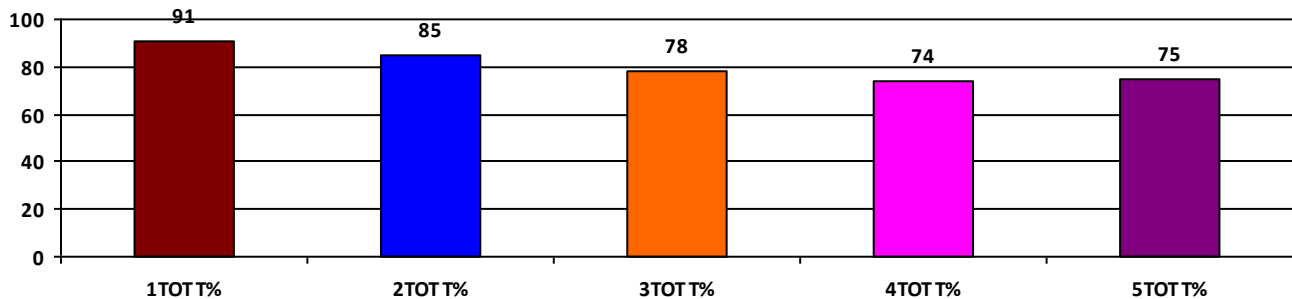
	Boys	Girls	Total
SCHOOL GR.	B	A	A
Diff. to Pre-Test	(0)	(0)	(0)
DIST. GR.	B	A	B
STATE GR.	B	B	B

CLASSWISE APPEARED

DETAILS	I STD	II STD	III STD	IV STD	V STD
BOYS	1	1	3	2	2
GIRLS	2	2	7	4	3
TOTAL	3	3	10	6	5
Diff. to Pre-Test	(-1)	(0)	(0)	(+2)	(0)

CLASSWISE PERFORMANCE GRADES (% of marks)

DETAILS	I STD	II STD	III STD	IV STD	V STD
%	91	85	78	74	75
SCHOOL GR.	A	A	A	B	B
Diff. to Pre-Test	(0)	(0)	(+1)	(0)	(0)
DIST. GR.	B	B	B	B	B
STATE GR.	A	B	B	B	B



GRADEWISE PERFORMANCE (NO. OF STUDENTS)

ENGLISH	1 Std	2 Std	3 Std	4 Std	5 Std	TAMIL	1 Std	2 Std	3 Std	4 Std	5 Std
GR. A	3	3	8	4	3	GR. A	3	3	9	2	1
GR. B	0	0	1	1	2	GR. B	0	0	0	3	4
GR. C	0	0	0	1	0	GR. C	0	0	0	1	0
GR. D	0	0	0	0	0	GR. D	0	0	0	0	0
GR. E	0	0	1	0	0	GR. E	0	0	1	0	0

DEAL POST TEST 2019-20 - SCHOOL REPORT CARD

YANAM
DDSE

34010113303 SASR GOVT. PRIMARY SCHOOL - DARIALATIPPA

All Grades represent the following scorings in % *

GRADE A - >75	
GRADE B - 51 TO 75	* School Status Grade
GRADE C - 26 TO 50	represents the total
GRADE D - 10 TO 25	enrollment of the
GRADE E - <10	school (Not %)

Note: The Values given in the brackets denote the difference between the Pre and Post Test Scores.
(For Example: If the Pre-Test Grade is 'C' and the Post-Test Grade is 'A', then the progress is +2)

SCHOOL GRADE - AB

Status Gr. A (0)	Performance Gr. B(+1)
------------------	-----------------------

OVERALL PERFORMANCE GRADES

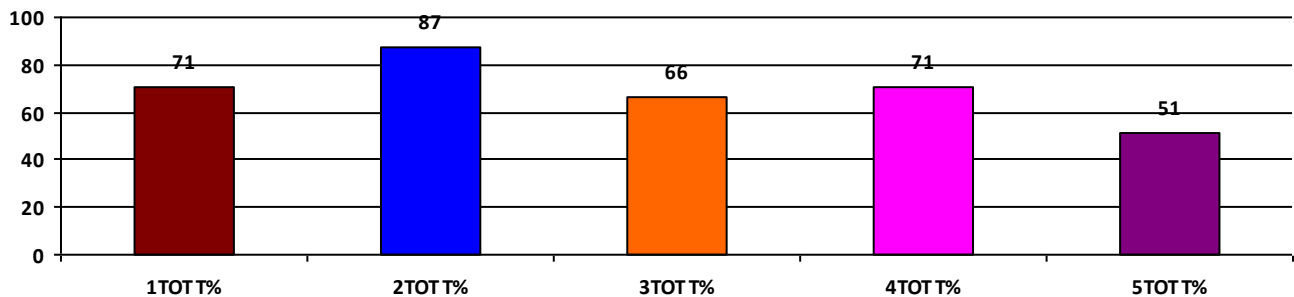
	Boys	Girls	Total
SCHOOL GR.	B	B	B
Diff. to Pre-Test	(+1)	(+1)	(+1)
DIST. GR.	B	A	B
STATE GR.	B	B	B

CLASSWISE APPEARED

DETAILS	I STD	II STD	III STD	IV STD	V STD
BOYS	8	8	13	10	15
GIRLS	11	12	21	10	10
TOTAL	19	20	34	20	25
Diff. to Pre-Test	(-1)	(0)	(-3)	(0)	(+1)

CLASSWISE PERFORMANCE GRADES (% of marks)

DETAILS	I STD	II STD	III STD	IV STD	V STD
%	71	87	66	71	51
SCHOOL GR.	B	A	B	B	B
Diff. to Pre-Test	(+1)	(+1)	(0)	(+1)	(+1)
DIST. GR.	B	B	B	B	B
STATE GR.	A	B	B	B	B



GRADEWISE PERFORMANCE (NO. OF STUDENTS)

ENGLISH	1 Std	2 Std	3 Std	4 Std	5 Std	TAMIL	1 Std	2 Std	3 Std	4 Std	5 Std
GR. A	8	17	10	7	3	GR. A	5	16	6	14	0
GR. B	10	0	20	9	10	GR. B	13	1	22	3	12
GR. C	1	3	4	4	9	GR. C	1	3	6	3	10
GR. D	0	0	0	0	3	GR. D	0	0	0	0	3
GR. E	0	0	0	0	0	GR. E	0	0	0	0	0

DEAL POST TEST 2019-20 - SCHOOL REPORT CARD

YANAM
DDSE

34010113304 GOVT. PRIMARY SCHOOL - SEETRARAM NAGER

All Grades represent the following scorings in % *

GRADE A - >75	* School Status Grade represents the total enrollment of the school (Not %)
GRADE B - 51 TO 75	
GRADE C - 26 TO 50	
GRADE D - 10 TO 25	
GRADE E - <10	

Note: The Values given in the brackets denote the difference between the Pre and Post Test Scores.
(For Example: If the Pre-Test Grade is 'C' and the Post-Test Grade is 'A', then the progress is +2)

SCHOOL GRADE - DB

Status Gr. D (0) Performance Gr. B (0)

OVERALL PERFORMANCE GRADES

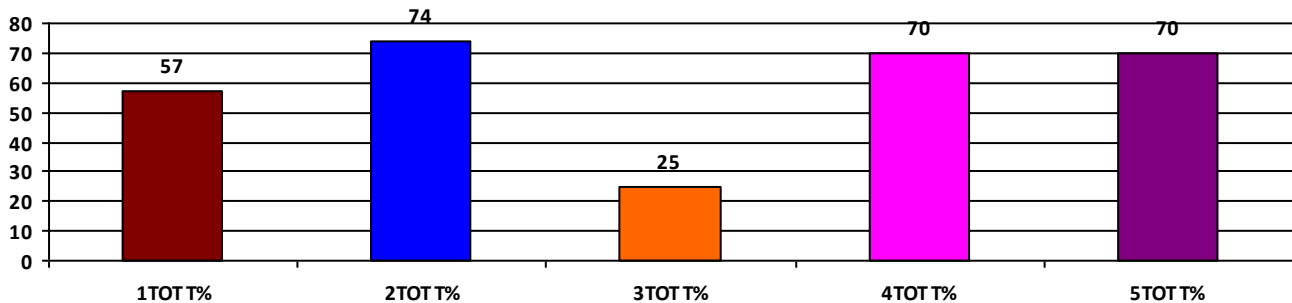
	Boys	Girls	Total
SCHOOL GR.	B	B	B
Diff. to Pre-Test	(-1)	(0)	(0)
DIST. GR.	B	A	B
STATE GR.	B	B	B

CLASSWISE APPEARED

DETAILS	I STD	II STD	III STD	IV STD	V STD
BOYS	1	2	1	1	2
GIRLS	2	1	1	1	1
TOTAL	3	3	2	2	3
Diff. to Pre-Test	(0)	(0)	(0)	(0)	(0)

CLASSWISE PERFORMANCE GRADES (% of marks)

DETAILS	I STD	II STD	III STD	IV STD	V STD
%	57	74	25	70	70
SCHOOL GR.	B	B	D	B	B
Diff. to Pre-Test	(0)	(-1)	(-1)	(0)	(-1)
DIST. GR.	B	B	B	B	B
STATE GR.	A	B	B	B	B



GRADEWISE PERFORMANCE (NO. OF STUDENTS)

ENGLISH	1 Std	2 Std	3 Std	4 Std	5 Std	TAMIL	1 Std	2 Std	3 Std	4 Std	5 Std
GR. A	2	1	0	0	1	GR. A	1	2	0	1	1
GR. B	0	2	0	1	2	GR. B	1	1	0	1	2
GR. C	0	0	1	1	0	GR. C	0	0	1	0	0
GR. D	0	0	0	0	0	GR. D	1	0	0	0	0
GR. E	1	0	1	0	0	GR. E	0	0	1	0	0